

July 2017

1.50 incl.
GST

Delegate Doings



ISSN 1446-6716

Volume 16, issue 7.

OSSIE CRUSE AND BUNDIAN WAY FEATURED IN ABC's AUSTRALIAN STORY

On Monday 3rd July, the ABC's Australian story will feature Aboriginal Elder Ossie Cruse from Eden including his involvement with the Eden Land Council in the opening up of the Ancient Aboriginal Pathway, the Bundian Way. Some of the footage was shot on Delegate Mountain or "Delegate Hill" as it is known locally. Before white man the Aboriginals called it Dizligit meaning "one big hill". It is actually the highest single mountain in the Great Dividing Range and would have been a landmark for both Coastal and Mountain aborigines during their long trek for the gathering of the Bogong Moth in the spring and the Whale hunt in the autumn.

Several years ago John Blay, who is the SEF Co-ordinator of the project, came to Delegate to tell us of the plans to open the Aboriginal pathway, Delegate being the only town along the route. The pathway travels from south of Eden, through mountainous coastal country to Delegate and on through Corrowong plains to eventually enter the wild and rugged country surrounding the Snowy River. A long trek through steep mountain ranges, before the journey ends at the summit of Mt. Kosciusko. The route has been surveyed and will eventually have camping and overnight accommodation spots along the way and aboriginal guides available.

Local girl, Emma Sellers, having previously won a Young Rural Achievers Award when she heard about a Royal Agricultural Society Grant for rural projects. Council Development Officer Karen Cash got on board and applied on behalf of the Delegate Progress Association who were successful in obtaining the grant to open an aboriginal gallery. Their building was originally built by the Commercial Banking Company of Sydney in 1925 after establishing a branch in 1888. The bank premises were ideal for a gallery so the group rolled their sleeves up, held several working B's to remove all the old bank counters and other objects before spending the grant to polish the floor boards, paint the premises, carpet the vault, add storage cupboards and ready it for hanging the first Indigenous exhibition in December 2012. There have been a number of exhibitions since and a new one featuring artist Richard Campbell opens on July 6th with the official opening on Saturday afternoon 15th July at 2pm.



Next Issue: 4th August then: 1st September and: October 6th

Inside this issue:

Council Meeting	3
Sports Ground News	8
School News	10
Bundian Gallery	11
Tuesday Club	12
Here & There	13
Looking Back	14

Dates for your Calendar

- 6th July—New Exhibition Bundian Gallery
- 3rd July to 13th July School Holiday programmes (see details page 6).
- 11th July—Tuesday Club
- 12th July—DPA Meeting (note change of date)
- 15h July—Official Opening Bundian Exhibition at 2pm
- 15th July—Music at Hotel “Mojo”

Claim The Date

- Tigers Reunion 23rd September

CLAIMING THE DATE DELEGATE TIGERS JUNIORS 1967 RE-UNION. SATURDAY 23RD SEPTEMBER

See details page 7

BORDERLINE GALLERY WINTER WARMERS HANDKNITTED BEANIES AND SCARVES FOR SALE



YUIN MURU NJIN GADHU

Land & Ocean of Yuin people
The works of Richard Campbell

6 July - 6 September 2017

BUNDIAN WAY GALLERY

66 Bombala St, Delegate, NSW
Ph (02) 6458 8388



Delegate Progress Association
Eden Local Aboriginal Land Council

Council Planning Meeting in Delegate.

Around 30 locals turned out for the Snowy Monaro's Council Strategic Planning meeting at the Delegate School of Arts on Thursday 8th June. There was a good cross representation of people in attendance with a variety of views expressed and also a number of concerns which were replicated across each group of participants. Some of these were lack of decent public transport, lack of access to Health, need for something to kick start employment in the area, particularly for youth, more promotion for tourism including the Bundian Way which has the potential to become an important part of a tourism package for this area. Need to be included on maps – so many NSW maps cut off at Bombala, road signage is inadequate and Council should be able to rectify this. Heritage and history was also seen as something which could advance Delegate's tourism potential.

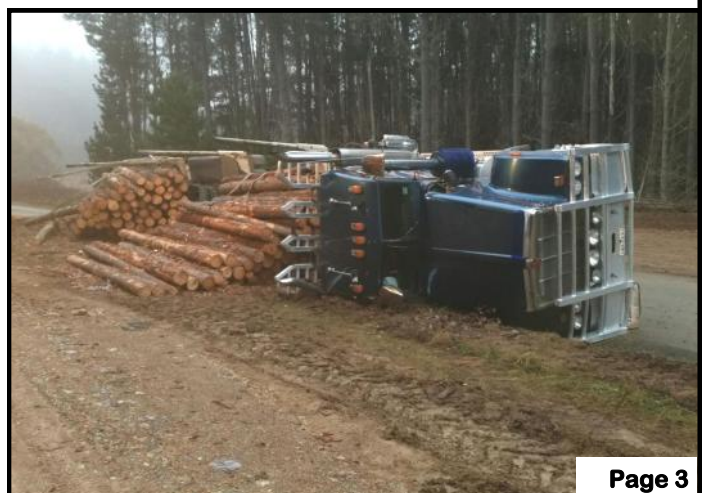


LOADED TIMBER TRUCKS OVERTURN ON LOWER BENDOC ROAD.

In a matter of weeks there have been two accidents on the Lower Bendoc road involving loaded timber trucks. Fortunately the drivers were not injured in either case, but the accidents were caused by the wheels of the trucks going into table drains. It illustrates the dangers involved with these large trucks negotiating narrow country roads. When unloaded the trucks are able to take the shorter route through Craigie, but a small bridge prevents them going back that way when carrying a heavy load. The old wooden bridge at Lower Bendoc had been closed for renewal for three months and has just opened again. This meant that while works on that bridge were going on all traffic had to take the longer route through Bendoc and via Hayden's Bog.

The large pine plantations planted fifteen or so years ago are now ready for harvest, but many are situated in areas where it is impossible to transport them out on large trucks, because of the need to cross old wooden bridges, some over 100 years old. Despite advice from locals, the plantings went ahead in great haste and it is now obvious that it was a case of putting the cart before the horse. Some of the pines ready for harvest are in the Corrowong/Tingiringi areas and Tubbut/Dellicknora areas over the border.

Left: Truck owned by Innes from Eden tipped after going into table drain near old Lower Bendoc School. Right: truck owned by Raymond Jamieson driven by Robbie Forrester got into table drain just after leaving the plantation.



LABOUR PROMISES COUNCIL DEMERGERS.

Peter Primrose, Shadow Minister for Local Government, recently visited both Delegate and Bombala and confirmed that a Labour Government if elected would allow demergers to take place for Councils who wish to do so. He was accompanied by Greg Warren, Labour Member for Campbelltown and Amanda McCormack. Peter and his team have also visited a number of disaffected Councils across the State, finding that so far any advantages of a merger are outweighed by the disadvantages and loss of employment which is starting to follow.

Shadow Minister Primrose said there is total agreement across the Labour team regarding demergers and last week the Shooters and Fishers party put a motion to the Legislative Assembly concerning demergers and it was passed unanimously. However because of the numbers in the Lower House, the motion will not pass there, but it will serve the purpose of putting the Government on notice. When asked whether it was feasible to demerge he said it had happened in Queensland in recent years and could go ahead without any major problem.

He also said that the whole bungled exercise of Council Demergers has been inherited by the Berejikian Government and will take a lot of sorting out, with several cases still in the Courts. He also invited us to send any questions we may have to him and they will be asked in Parliament as Questions on Notice.

It is our opinion that if the mergers had been well thought out, instead of a hasty municipal power grab by the Baird Government, they could have had some promise with a fair sharing of resources. There should have been provision for smaller councils not being disadvantaged and retaining their identity, instead of being swallowed up by the larger partners, which is what is obviously occurring. This will be exacerbated by lack of representation and larger Councils getting the lion's share, something so obvious it should have been foreseen. Also it is hard to see how any money will be saved, with extra management staff already appointed. Will any savings then be made by cutting staff in Bombala or other small towns, thus decimating the town as with every family who leaves a domino effect follows. Already local Waste Management contractors in Cooma and Bombala have lost their contracts?

The way the whole exercise was done has also created anger in the bush with no respect being shown to former mayors and councillors, most of them finding out about their dismissal on the radio. With elections to be held in September it is not long until we will know if we will have any representation and how many more local jobs will be lost.

Country Labour

Community Survey Forms available at the RTC

Wanting your views on:

Local health Services?

Cuts to Penalty rates?

Resourcing Schools?

Forced council Merges?

Investment in Renewable Energy?

Delegate Café

64 Bombala St Delegate

DINE IN - TAKE AWAY

OPEN 7 DAYS

Fruit & Veg - Groceries

DVD Hire - Eftpos

Tel (02) 6458 8171

Pizza available most Friday & Saturday Nights

ELGAS Distributor

Pickup Only (Sorry no Delivery)

DELEGATE HOTEL

Your host: Graeme Payten

**Accommodation
Counter Lunches**

Music 15th July

"Mojo"



**Sky Channel & Pub Tab,
ATM and Eftpos**

Ph: 6458 8091

TALBOT TRANSPORT



LIVESTOCK & GENERAL

1 Hensleigh Street, DELEGATE 2633

Mobile: 0418 516 076

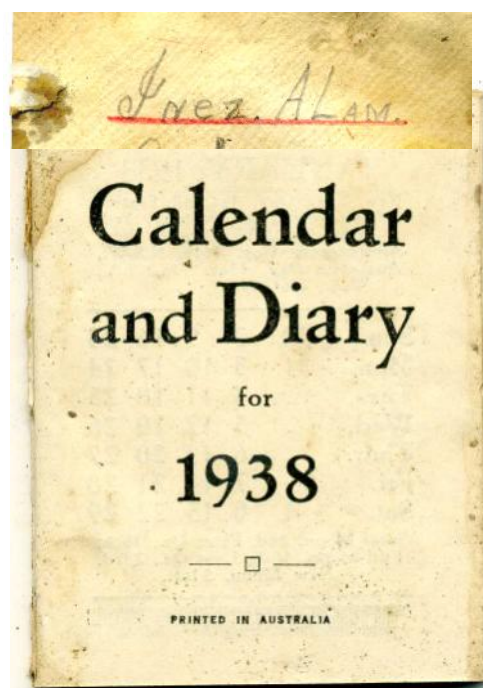
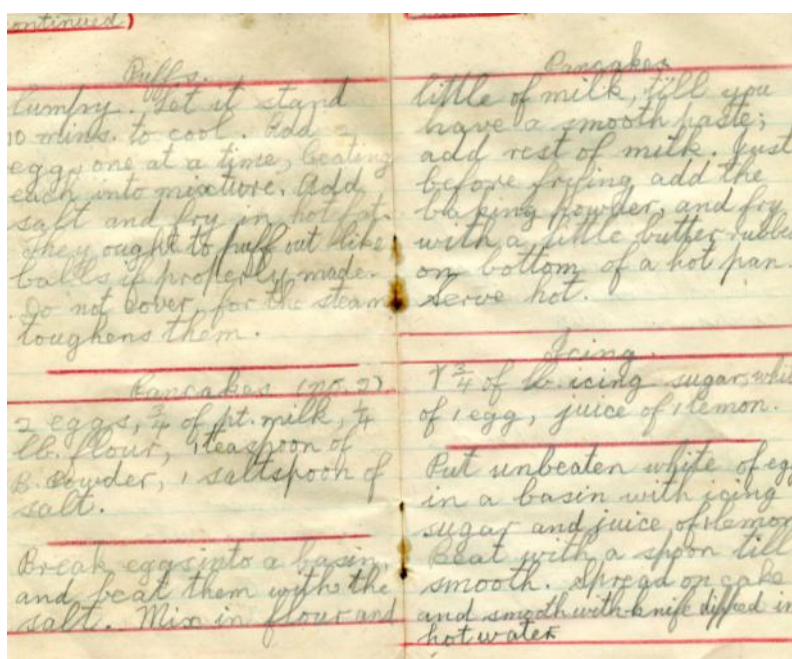
Phone: (02) 6458 8085

Fax: (02) 6458 8055

OLD RECIPE BOOK AND CALENDAR FOUND IN CUPBOARD

When Jim Hepburn removed tin lining from an old cupboard in the process of restoring it, he was surprised to find an old book and a calendar dated 1938. The book with hand written recipes had the name "Inez Alam" inscribed on the inside cover. The Alam family owned a General Store in Delegate in the 1930's where the present store stands today. Dorothy Hepburn says her mother must have bought the cupboard from them, possibly at their clearance sale. The Alam family moved back to Sydney when they sold out and one of their sons John became a Doctor and Peter spent some time with his sister Margaret Michael in Delegate when they owned the shop originally built by Peter Joseph.

The writing in the recipe book was done in pencil, so it is hard to read, but the recipes shown are for puffs and pancakes.



The Disability Trust is running a

School Holiday Program at the Bombala House 87 Caveat Street, Bombala.

Monday 3rd July Sewing and decorating kitchen aprons, paper mache: Cooking program, Scones for afternoon tea. \$5 fee.

Thursday 6th July, Games and pampering, paper mache, cooking program, making pizzas, \$5 program fee—Please bring own snacks.

Monday 10th July, Sharpie Art—mugs and plates, slime making, paper mache. Cooking program, make slice for afternoon tea. \$5 fee.

Thursday 13th July—Movie day, paper mache, cooking program: Make flavoured popcorn for movie. \$5 fee. IT IS NECESSARY TO BRING OWN LUNCH ON ALL DAYS. Contact 64526522

LANDMARK

an AWB company

Delegate
Tel: 6458 8004

a.h. - Peter Holt
Mobile 0427101418

Livestock
Merchandise
Insurance - Wool
Finance - Fertilizer

*Delegate
Hair Boutique*



Open
All Day Fridays
Delegate School
of Arts
Call in on the day
or telephone
0427587240
For an appointment

**PLUS For all
Your Floral
Arrangements**
weddings,
Birthdays,
Anniversaries,
Wreaths and
Private
Functions
Phone Pam
on 6458 4346
Mob: 0427587240



REMINDER
GRAND FINAL WINNERS
DELEGATE TIGERS
JUNORS 1967 REUNION
SATURDAY 23rd
SEPTEMBER 2017
DELEGATE COUNTRY
CLUB

**Calling the particular team
members, Administrators and
associates.**

Ph Philip Reed—0410 214 156
Dennis Callaway 0416 372 627

WANTED TO BUY

**Sheep/handle/Crutching
Cradle**

Suitable for small number
Please Contact Gary Berman
0409 888 248

LAUGHTER THE BEST MEDICINE

A man was telling his neighbour about the new hearing aid he had just bought. "It cost me \$4000 but it's state of the art. It's perfect."

"Really", answered the neighbour.

"What kind is it?"

"About 12.30," the man replied.

New Mower For Sportsground



Delegate Sportsground Committee are proud to have been successful in securing financial support in the last round of the Boco Rock Community grant Fund. The committee which is comprised of representatives from user groups including the Delegate Pony Club, Delegate Rodeo Campdraft Inc and the Delegate Pastoral & Agricultural Society have been able to purchase a much needed ride on mower, a push mower and a brush cutter.

A sportsground representative said that the Delegate Showground is our town's 'Safer Neighbourhood Place' and up until now volunteers have brought in their own mowers for ground maintenance. The representative stated that volunteer times have been decreased dramatically just by having a mower suited to the job and this has resulted in volunteers having time to look at ground improvements and not just maintenance.

Delegate Sportsground Committee would like to say a huge thankyou to Boco Rock and the former Bombala Council, for making this purchase possible and enabling a volunteer group to maintain and improve this asset for the community.

Photo: Katrina Jamieson

Ken Neven, Sinead Cameron, Nerida Reed, Lachlan Reed, Jan Ingram, Laurie Reed & Russell Buckman



Delegate Multi Purpose Service

Wellness Clinic is held at the MPS, in Craigie Street Delegate. People come to the clinic for procedures and assessment by nursing staff.

The clinic is open

Mon, Tue, Thur, Fri 1pm to 2pm

Every week except public holidays.

No Appointments necessary.

A variety of procedures are available.

- Wound care
- Blood pressure readings
- Blood sugar readings
- Non-urgent ECG's
- Suture or clip removal
- Injections – with Dr's written order
- Other procedures that do not require a Dr.

Pathology clinic

Wednesday 9.30am – 10.30 am. No appointment necessary. Closed public holidays.

Other Services

Women's Health Nurse

3rd Wed of the month

Dietician and Diabetes Educator

2nd Thur of the month

Immunisations – 4th Fri of the month

Podiatry – for HACC clients – monthly

Ring the MPS for appointments for the dietician, diabetes, immunisation, podiatry and women's health 6459 8000

Child and Family Health – visits Delegate MPS on a regular basis ring Kirsty on 6458 5777 for an appointment.

VOLUNTEERS WANTED LOOKING TO JOIN A FRIENDLY GROUP OF LOCALS CONTRIBUTING TO THE DELEGATE COMMUNITY?

**Why not volunteer
one day a month at the
Delegate Rural Transaction Centre
and Gallery complex.**

10am—3pm

Monday, Wednesday & Thursday

**A friendly demeanour and basic
computing skills is all you require!**

Training is provided.

**Parents with well behaved small
children welcome.**

PHOTOS FROM THE SCHOOL'S STEPHANIE ALEXANDER GARDEN



The School garden at the Delegate Public School apart from providing food, teaches the children many things and encourages an interest in growing and cooking their own home grown food.. Above L: Seed harvesting. R: The large potato grown in the garden. Bottom: Preparing the soil.

DELEGATE SCHOOL NEWS

Visiting the school kitchen is such a pleasing experience,! Leaders from both the older and younger age groups develop their skills and students are totally engaged. As seen in the photo.

In the garden students are so engaged they used their lunchtimes to continue on with their new potato plots. A big tick to all those involved from principal Carol Sellers

The Pambula Swimming excursion for Years 2 to 5 will be taking place during Week 4, Wednesday to Friday, 9th—11th August

Sadly the school will hold a farewell picnic for Leonie Walmsley thanking her for all her wonderful contributions over the past years.

P&C Meeting first Wednesday back 19th July at 6.30pm.

NEWS FLASH

We have had a case of suspected Whooping Cough reported at Delegate School. At this stage it is unconfirmed but we feel it is important to inform parents/carers about this communicable, reportable disease. The following information is from Dept. of Education regarding whooping cough:-

Whooping cough starts like a cold and progresses to bouts of coughing that can last for many weeks. The infection can occur even in fully-vaccinated children. Older children may just have a cough that is persistent and may be worse at night. Coughing spreads the infection to others nearby. Whooping cough can spread to anyone at home, including younger brothers and sisters. Whooping cough can be especially dangerous for babies. Children with these symptoms should see a doctor.

If your doctor diagnoses whooping cough in your school-aged child, please let the school know and keep your child at home until they have taken 5 days of antibiotics. Keep coughing children away from babies.

Whooping cough vaccines give good protection against infection but immunity fades with time. Check that all your children are up to date with their vaccines, due at 6 weeks, 4 months, 6 months, 4 years and 12 years of age (offered to all Year 7 students through the NSW school-based vaccination program). A booster is also recommended at 18 months of age.

9A booster dose of vaccine is also recommended for adults that are in contact with young children, such as school staff and parents. Pregnant women are recommended to have a booster dose during each pregnancy and this is funded by NSW Health. Those who are new parents or carers of babies should consult their general practitioner about appropriate immunisation.

Your local public health unit can provide advice about whooping cough on 1300 066 055 or visit the NSW Health website ..

HOSPITAL AUXILIARY NEWS

Delegate Hospital Auxiliary held their AGM on June 19th. It was great to see so many turn up and we were able to form a new committee. After 17 years as Secretary/Treasurer Gail Smallman stepped down from this position. The new committee is as follows:

President: Claire Strickland

Vice President: Helen Jamieson

Secretary: Marie Smith

Treasurer: Nola Sanajko

Assistant Treasurer: Marie Smith

Welfare Officer: Janice Lewis

Congratulations to the new committee.

This financial year the Auxiliary purchased a new recliner lounge chair, slings for residents, two new dementia doors, doona covers, monthly cafe lunches as well as purchasing meat for Christmas and buying Christmas presents for the residents. We have also purchased a new set of wheelchair scales for the Community Nurse. The cost of these items was about \$6,070.00

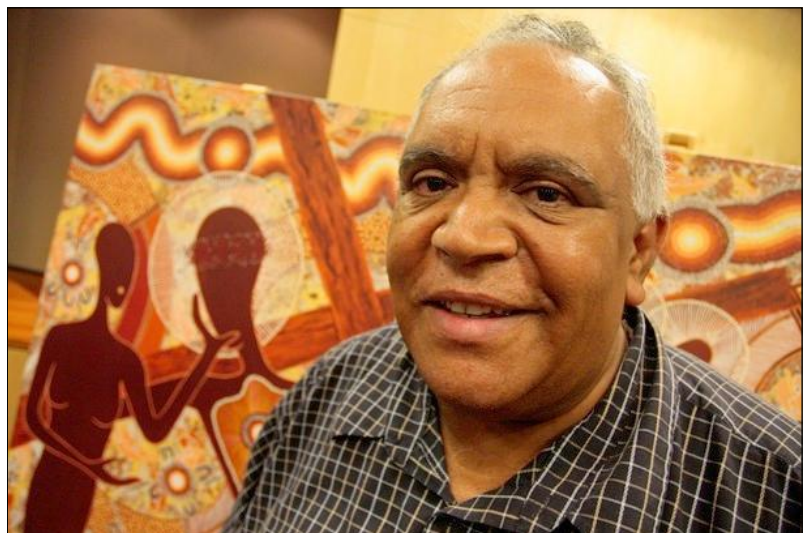
This will be my final report and I congratulate the new committee and wish them all the best.

NEW EXHIBITION AT BUNDIAN WAY GALLERY

The works of Aboriginal artist Richard Campbell will be on display at the Bundian Way Gallery, Delegate from 6th July through to September in his new exhibition *Yuin Muru Njin Gadhu* which means "land and ocean of Yuin people".

Mr Campbell is from the Yuin Monero nation and is a descendant of Breily of Bugenbro who sang to Tom the Killer Whale at Eden, bringing in the humpbacks to the whalers.

Richard Campbell has exhibited throughout Australia and performed around the world. He is highly respected by his community as an artist and teacher. His exhibition at the Bundian Way Gallery will feature a variety of his works. The exhibition will be open for viewing from the 6th July and the official opening will be held at the gallery on Saturday afternoon the 15th July.



Tuesday Club

Delving into the history of Delegate proved to be very informative and entertaining for members of the Tuesday Club when they met for their June meeting at St Josephs Church Centre. As well as a delicious afternoon tea, everyone enjoyed talking about the early years of the town when it was a thriving community boasting three hotels, several general stores, a chemist shop, a bakery, a butchery and even a butter factory just to name a few of the businesses that made up our small town. Very hard to imagine as we look around today, that such a bustling community ever existed.

The Tuesday Club hopes to continue discussing our towns history at the next meeting on 11th July again at the Church Centre .

Meeting time is 11.30am, for lunch at 12.15pm. Members please bring sandwiches or slice to share soup will be provided. Also if anyone has any old photos please bring along.

Anyone wishing to come along please contact Sandra Walker on 64588089 for further information.

Members check notices in local shop windows.

Below Back Row: Jayne Sellers, Joan Jones, Kaye Reed, Henry Sellers, Gloria Cotterill, Lorraine Cottrell, Natalie Armstrong.



HERE & THERE

Happy Birthday to all those born in July, including Joan Jones, Robyn Mikula, Su King, Josh Stuart, Bella Tonissen, Kaye Reed, Bradley Matthews. It appears Kay and Bradley have been having two birthdays each year, one in June and one in July. We have been reliably informed that they were actually born in July. So only one birthday wish from here on.



Best wishes to Joan Jones who celebrated her birthday with family at the home of daughter Janice Lewis

The death occurred in Cooma Hospital of on the 15th June of local man Dick Walcott. His funeral service will be held at St Matthias Church, Bombala on Friday 8th July. Dick is survived by two sons, Digby and Henry, his wife Jo having pre-deceased him. Sympathy is extended to his sons and other relatives.

Former local man Noel Lewis died this week in a Melbourne Hospital. Noel who has resided in Bairnsdale for many years is survived by wife Janice and two children. One brother Roger and two sisters Rhonda and Sheree also survive him. Sympathy is extended to all.

The water meters have been installed in Delegate and the workmen have moved on. The next stage is the important upgrade to the filtration plant.

Another item of interest from the visit by Peter Primrose was information about the proposed sale of the Snowy Hydro to the Federal Government. Labour's position is that if the sale takes place the whole of the proceeds should go to Rural New South Wales. The Deputy Premier and our local representative John Barilaro has stated that a percentage will go to rural areas. For too long Rural NSW has been neglected and most people in the bush are of the opinion that the letters stand for Newcastle, Sydney and Wollongong, with an emphasis on the S being Sydney.

Sharon and John Stewart recently travelled to Sydney for the christening of their latest grandchild. Their daughter Katherine and her husband Nicholas Stanton returned from Seattle in the United States for the occasion. The little boy the second grandchild for John and Sharon was christened Hugh.



Congratulations to the new Committee of the Delegate Hospital Auxiliary, and a big thankyou to Gail Smallman for her 17 years service to that organisation. These ladies do a tremendous job raising money to buy the extras needed at our local hospital. They would love to welcome some new members.

The Tuesday Club have been delving into local history and at their last meeting held in St Josephs School hall the members spoke of the many changes they have seen in their small town. It is hoped to record some of their memories of a time when the town had a larger population, motor cars were a rarity and life moved at a slower pace.

As we move into July the weather is turning colder and the forecast tells us that we can expect big frosts, so no doubt the services of a plumber will be required for the usual frozen taps and burst pipes.



Lauren Dillon attended last night's Council meeting and tells us that there will be three months waiver on tip fees. No doubt this news will be in local papers, but we presume that arrangements for the changeover are not completed. The question is will there be a service next Tuesday?

LOOKING BACK

OPENING OF BUNDIAN WAY GALLERY



Group shot at the inaugural exhibition for the opening of the Bundian Gallery on 12th December 2012, including Emma Sellers, middle back and Jocellin Jansson RAS representative on right.

Below: Author Mark McKenna who officially opened the Gallery, John Blay SEF Co-ordinator, President DPA Bill Guthrie and BJ Cruse, son of Ossie. R: Aboriginal artist Cheryl Davison.



Community Information

EMERGENCY / AMBULANCE: 000

FIRE: 000

POLICE

Delegate: 6458 8044

Bombala : 64583444

Cooma: 6452 0099

Bendoc: 6458 1523

HOSPITAL: 6459 8000

DOCTOR: 64951369

CHURCHES

Catholic: Father Mick McAndrew 64522062

Sister Teresa Keane: 6458 3045

Services: Delegate Saturday 6:00pm

Liturgy of the word and Holy Communion

Bombala Sunday 9:00am

Liturgy of the word and Holy Communion

Anglican: Rev. Robert Lindeck 6241557 Mob.

0408531544

Rev Judy Holdsworth—64583513

Services: 11am every Sunday..

COMMUNITY HEALTH (3 days per week)

Generalist Community Nurse—Monday, Thursday, Friday

Wellness Clinic—Monday, Tuesday, Thursday and Friday 1pm to 2pm

Pathology—Wednesdays 0930-1-3- hours

Immunisation Clinic—Fourth Thursday from 1100hours.

Podiatry Clinic

Victorian Visits Tuesdays

Call MPS 64598000

Healthdirect and GP helpline 1800022222

MONARO FAMILY SUPPORT SERVICE

Bombala Office: 6458 4888

open Tues to Thurs - 9:00am to 5:00pm

COUNCIL CHAMBERS: 6458 3555

DELEGATE PRE-SCHOOL: 6458 8196

DELEGATE PUBLIC SCHOOL: 6458 8183

DELEGATE PROGRESS ASSOCIATION

RTCT Centre - 6458 8388— dpaoffice@bigpond.com

Newspaper: delegateprogress@exemail.com.au

NRMA/RACV: Jack Stewart: 64588047

TUBBUT ACCESS CENTRE: 6458 0295

DELEGATE CARAVAN PARK: 64584047

Delegate Progress Association Inc.

66A Bombala Street

DELEGATE NSW 2633

PH 6458 8388 Fax 64588 374

E-mail dpaoffice@bigpond.com

delegateprogress@exemail.com.au

(for paper)

‘Delegate Doings’ Subscription:

\$38.60 by Post

Email \$16.50.

Cash or Cheque payable to
The Delegate Progress Association Inc

Amount \$ _____

Name

Address or email:

The Delegate Doings is published by the Delegate Progress Association. We welcome information about meetings and reports on functions and other activities of local people and organisations, factual historical articles and poetry etc. We do not publish letters to the editor. The publisher accepts no responsibility for any advertisement, or articles. Any advertisement or article is published at the risk of the contributor, who accepts liability for any intended publication. All such contributors agree to indemnify the publisher and warrant that the material is accurate and is neither deceptive or misleading, in breach of copyright, defamatory, or in breach of any other laws and regulations.

ADVERTISING IN THE “DELEGATE DOINGS”

Spot Ad:	1	6	11
\$5 cash—\$7.50 a/c	Issue	Issues	Issues
1/4 Page	\$17.50	\$87.50	\$157.50
1/2 Page	\$35.00	\$175.00	\$315.00
Full Page	\$70.00	\$350.00	\$630.00
Back Page	\$80.00		
Full Page Insert	\$90.00		

Colour advertising: prices on application

Winter Work

Pest and disease. In our district all deciduous fruit trees need preventative spraying for fungal disease e.g. leaf curl, brown rot, shot hole. Copper sprays are most often used treat fungal disease but spraying with lime sulphur at leaf fall does a double duty as it also controls many insect pests and lichen. Both of these are contact sprays so all parts of the tree will need to be covered thoroughly which is no mean feat if the tree is large.

Traditionally a copper spray is undertaken at bud swell in Spring and another when flower petals just begin to show at bud burst, commonly referred to as 'pink bud stage'. These timings are critical, there is no leeway. However, just as there has been a change of emphasis on winter pruning of deciduous trees towards a summer pruning that better suits the warmer Southern hemisphere so there is now an appreciation that a copper spray may be more effective at an earlier time i.e. as buds are forming in early June.

Peaches and nectarines are the most affected by fungal disease and plums the least. However plums are decimated by sawfly larvae, the small black slug-like creature called cherry slug. Sadly cherries are prone to both problems so will require the most maintenance. Apples and pears are usually disease free here. Both are troubled by a number of pests e.g woolly aphids and codling moth on apples and cherry slug on pears. Insect pests are much harder to treat than fungal disease.

Fortunately most ornamental trees and shrubs are pest free largely due to the break in the pest life cycle created naturally by the period of leaflessness. This effect is enhanced in ornamentals because individuals of each species are planted in relative isolation preventing cross infection. Sometimes branches may show a girdle of caterpillar droppings from the plum borer and then the only solution is to cut the branch out below the damage.

Structural problems. The range of structural problems includes congestion of branches and/or fruiting spurs, dead branches, cross growth which causes rubbing of bark creating weakness and allowing disease entry as well as those plants whose size has simply gotten out of hand. Structural issues always require pruning to correct them and pruning is a skill that in turn requires a good understanding of the growth habit of the target plants.

There are a great many videos available on the net demonstrating the pruning of individual species which can be helpful. The rule of thumb is that those plants that do not readily produce buds from woody parts resent cutting into the old wood and will often deteriorate and die e.g. conifers, lavender, rosemary. Such plants need to be started again from cuttings or purchased anew.

Some long lived shrubs such as the Snowball tree (*Viburnum opulus* 'Sterile'), Cotoneasters and Bamboos send up multiple stems from ground level and these respond well to completely removing some of these. Other plants such as Buddleia or silk tassel bush (*Garrya elliptica*) require to be rejuvenated periodically by being cut off completely at ground level.

Another general rule is that flowering ornamentals should be pruned immediately after flowering because this allows them to develop the next year's flower buds on new growth. If for instance you shape a spring flowering plant in the Autumn/Winter clean-up the Spring flowers will be removed and a season is missed.

Because access is difficult all year round the **Evergreen shrubs** are more difficult to treat when they develop a population of insect pests. I am thinking of Azaleas and Rhododendrons that can be debilitated by lace bugs that live on the undersides of leaves. Bugs suck sap causing the leaves to turn silvery. Lace bugs do not disperse far or quickly so it takes a long while for them to either reach harmful numbers or move to new plants. They are dormant in Winter surviving only as eggs. A single application of a systemic insecticide containing imidacloprid will eradicate the population for many years if applied at the critical time i.e. late to mid spring. This timing captures both the late hatchings as well as the earlier hatched ones just before they reach adulthood and the reproductive stage. The organic method is hosing under leaves with soapy water. This is arduous and needs repetition. However great care needs to be taken with the alternative chemical treatment mentioned as this is the substance that is killing bees and other pollinators worldwide ultimately jeopardising human survival.

