

July 2018

**1.50 incl.
GST**

Delegate Doings



**Delegate Progress
Association**

ISSN 1446-6716

Volume 17, issue 7.

DELEGATE HOTEL—THE CHANGING OF THE GUARD.

Below: Graeme with new owner Paul Herringe.



After 37 years at the helm Graeme Payten left the Delegate Hotel for the last time on Tuesday the 3rd of July, handing over to new owner Paul Herringe. Paul who hails from Sydney's Northern Beaches says he hopes he will fit in with the Delegate Community, and if his friendly demeanour is any indication, we are sure he will. There was a good crowd at the Hotel on Friday the 29th July and over the week-end to say goodbye to Graeme, his partner Jenny and members of his family who were also present. It was also a chance to meet new owner Paul, whose wife is expected to arrive later, as she is busy getting their home readied for rental. They have two grown up daughters who will only be visiting, as both are settled in Sydney. Paul tells us he was a Rugby Union player and is still a keen supporter of that sport, as well as having an interest in Rugby League.

Next Issue: #rd August then: 7th September and: 5th October

Inside this issue:

Payten's Farewell	3
Bundian Gallery	4
Pony Club	8
School News	10
Here & There	13
Looking Back	14
Gardening news	16

Dates for your Calendar

- 21st July Card night RSL Hall
- 1st August Heritage Weekend meeting
- 14th August— DPA Meeting.

- 27th/28th October Celebrating our Heritage

FOR SALE

HOME BREWING BASIC KIT

25L Brewer with airlock and tap

Bottle capper

Beer Hydrometer

Bottle Filler

Sanitiser/Steriliser

100 bottle caps

Crate of clean bottles for first brew

\$80.00

FOWLERS VACOLA BOTTLING OUTFIT

2 No. 31 bottles with lids, seals and clips

4 No. 27 bottles with lids, seals and clips

6 No. 20 bottles with lids seals and clips

\$100

FOWLER PRESERVING JARS

Quantity of No 27 and No. 312 Jars **\$4
each**

Phone: 0438431942

THANKYOU

Norman Armstrong and Family sincerely thank all those who attended the Service celebrating Audrey's life. Also for all the beautiful flowers, cards, messages and gifts of food.

Your comfort and support at this sad time is greatly appreciated.

Delegate RT/CT Centre

Free Seniors Internet Access

Centrelink/Medicare Access

Internet Access

Photocopying, Fax

Photo Printing

Laminating

RTA E-Tags for Hire

Borderline Gallery

Nurses Cottage / Gallery Flat

Accommodation Bookings

Opening Hours

Mon, Wed, Thurs, Fri and Saturday

10am to 3pm

Phone 6458 8388

A MONSTER FAREWELL NIGHT FOR THE PAYTEN FAMILY

The Delegate Hotel had standing room only, both inside and outside when Graeme put on his Farewell night on the week-end of the 9th and 10th June. Graeme's partner Jenny and all his family were present for the occasion and during the official speeches Graeme's daughter Natalie and son Luke spoke of their life growing up in the Delegate Hotel. Sister Donna spoke of the Payten family's long connection to the Hotel trade, which included the Nimmitabel Hotel owned by their parents for over 40 years. Sheree Jones spoke on behalf of the Staff, Robin Mikula on behalf of Sunday Sips, and representatives of six local organisations paid tribute to Graeme for his help and support over many years. These Organisations, the two Camp Draft Associations, the Delegate Hospital Auxiliary, the Delegate Pre-School, the local RSL and the Delegate Progress Association, presented Graeme with a large framed photo of the Hotel which was taken by Alma Reed and framed by Schoos Studios, Cooma. Graeme's long time friend Graham Lundstrum who had travelled from Port Macquarie with his wife Joan and daughter Tracy, also spoke, saying that so far their visits had been a one way street, but he hoped that in future, Graeme and Jenny would be visiting he and Joan in Port Macquarie. It brought a tear to Graeme's eye when his granddaughter Chloe sang "You are My Sunshine" to him. An emotional Graeme in his reply, expressed his thanks for the photo, his family and all who had come to his farewell. In particular he went on to thank his loyal customers and the friends he had made during his years in the town.

The popular Poddy Dodgers band provided music for the large crowd until the early hours of the morning and Sunday saw another big crowd spend a pleasant afternoon entertained by Mumbo Jumbo.

Graeme and partner Jenny have retired to their home at Pambula where he will be taking a well earned rest and Jenny who has just resigned from her position at Monaro Logging, will take on part time employment at Pambula/Merimbula.



Above: Graeme with brother Peter and sisters Alana, Donna, and Shelly. Below: Graeme with partner Jenny, sons Luke and Anthony, daughter Natalie, Son-in Law Ben Stevenson and his four grandchildren Ethan, Charlie, Cooper and Chloe. On the right is Graeme as he will be remembered best.



Red Dust and Rock Pools

Delightful young Aboriginal Artists Bronwyn Smith and Gavin Chatfield, opened their exhibition at the Bundian Way Gallery on the 5th July. They each explained the meaning behind their paintings. The exhibition was opened by Karen Cash and despite a smaller than usual crowd, a number of paintings were sold.

The exhibition will be on display until mid September.



Above: Bronwyn Smith and Gavin Chatfield.
Below and right: Some of their beautiful artwork.



Delegate Café

64 Bombala St Delegate

DINE IN - TAKE AWAY

OPEN 7 DAYS

Fruit & Veg - Groceries

DVD Hire - Eftpos

Tel (02) 6458 8171

Pizza available most Friday & Saturday Nights

ELGAS Distributor

Pickup Only (Sorry no Delivery)

DELEGATE HOTEL

Your host: Paul Herringe

**Accommodation
Counter Lunches**

**State Of Origin Wed 11th
Darts Thursday 12th then back to
Wednesday Nights**

**Sky Channel & Pub Tab,
ATM and Eftpos**

Ph: 6458 8091

**Continuing the tradition of
great pub Food**

TALBOT TRANSPORT



LIVESTOCK & GENERAL

1 Hensleigh Street, DELEGATE 2633

Mobile: 0418 516 076

Phone: (02) 6458 8085

Fax: (02) 6458 8055

HAPPY BIRTHDAY TO NELL SOUTHAM

Congratulations to Nell Southam who celebrated her 90th Birthday recently with a surprise party at the Collegians Club in Wollongong. Despite Nell's instructions that there was to be no fuss for the occasion, over eighty family and friends gathered to help her celebrate the momentous event. After the initial shock surprise, the nonplussed guest of honour was treated to a beautiful smorgasbord buffet luncheon and was the recipient of many lovely speeches and gifts. Friends attending from Delegate included Scrub & Greg Crotty and Gerald & Vicki O'Hehir. Nell, husband Darrell and family, lived in Delegate in the sixties when Darrell was the local police officer. The Southam children attended St Joseph's School.

Right: Nell, surrounded her family admiring her lovely birthday cake,



COMMUNITY HEALTH UNVEILS CENTRAL INTAKE SERVICE

Southern NSW Local Health District has Community Health Centres, also referred to as Community Health Services, operating across the Health District. The aim is to provide a broad range of services to the local community.

Community health care is made up of a number of areas, including dental, allied health, counselling, maternal and child health services, rehabilitation programs and nursing services. The services available depend on the needs of individuals, families and community living in the district.

Southern NSW Local Health District are pleased to announce the introduction of Central Intake Service, beginning 30 April. The aim of the service is to provide a single point of access to community health across the health district.

Having single phone, fax and email lines will streamline the referral process and will provide an instant acknowledgement of a referral to the services.

The new contact details are:

Phone 1800 999 880

Fax 1300 797 331

Email SNSWLHD-CommunityIntake@health.nsw.gov.au



Delegate

Tel: 6458 8004

Livestock— Tony Brady,

Sam Platts

Agronomy— Kathryn

Bullas

0409032019

Merchandise

Fertilisers

*Delegate
Hair Boutique*



Open
All Day Fridays
Delegate School
of Arts
Call in on the day
or telephone
0427587240
For an appointment

**PLUS For all
Your Floral
Arrangements**

weddings,
Birthdays,
Anniversaries,
Wreaths and
Private
Functions

**Phone Pam
on 6458 4346**

Mob: 0427587240



SENIOR CITIZENS VISIT DELEGATE

Fifteen senior citizens from Berridale, Jindabyne and Bombala visited Delegate on Wednesday the 4th July. After calling at the Bombala Community Centre for morning tea, they came on to Delegate where they visited the RTC Centre for a look around the Bundian way and Borderline Galleries. They then picked up lunch from the Café and stayed at the Gallery for tea, coffee and slices provided by members of the Delegate Progress Association. Before returning home they drove around town for a brief look at the MPS and the Settlers Hut.

There are a number of Senior Citizens living in Delegate and surrounds who would probably enjoy such an outing to other centres, but so far we do not seem to be on the radar.



DELEGATE PONY CLUB NEWS

Delegate Pony Club held its July rally yesterday 1st July 2018 at Mila Livestock Learning and Equine Events Centre at 952 Mila Road MILA and what a great day had by all. Its was a very frosty start to the day but the sun did shine.

Delegate Pony Club had 18 riders attend with one new sign up.

The riders were briefed and then split into 2 riding ability and horse groups. One group went down to the indoor arena area and they were instructed by Meg Williams who is a riding instructor from Berridale. Meg ran the riders through a few basic riding skills and then tested their ability on Darryl the barrel, something Meg brought along to show the riders a bit of trick riding. The 1st group had a lot of laughs as they went through their group of riders. They all learnt a fair bit. The 2nd group that came to Meg in the afternoon session were instructed in control, different commands and leg work with balance with their riding abilities. Meg had the riders standing up in their stirrups, one hand in the air and cantering and the riders said they could feel their legs burn (the basics of trick riding). They also took turns in learning a bit about trick riding. They all had to mount from a run onto Meg's prop in many ways. Meg showed and put the riders through the paces of standing up on Darryl the Barrel the correct way. The riders all had a go at trying to mount their own mount from what they learnt from Meg, this vaulting session will aid the riders competing at the mounted games. All the riders had so much fun learning new skills with Meg and hope she will return to Delegate Pony Club for instructing again.



The riders also had the privilege of having a local Bombala gentleman Doug Peadon come along and teach them some skills and rules of Polo Cross. Doug has had many years experience and time in the saddle and having him at DPC rally was great for some young riders to learn new skills from so much experience. The 1st group learned the rules, then had a mini game that proved to be a bit of a challenge for most. There were lots of laughter and by the end of their session had picked up on some great racquet and ball skills. The afternoon session Doug had these riders on the ground learning racquet and ball skills.

These riders were set in groups of 3 catching and throwing the balls from racquet to racquet.



Delegate Pony Club members and parents wish to thank Sophie and Keith Campbell for having us at their venue, Meg Williams for sharing her trick riding skills and sharing her prop (Darryl the barrel) with them and to local Doug Peadon for sharing some great skills in polo-crosse. All the riders and their mounts had a great day learning and are sure to take home what they learnt and practice their new skills.

Delegate Multi Purpose Service

Wellness Clinic is held at the MPS, in Craigie Street Delegate. People come to the clinic for procedures and assessment by nursing staff.

The clinic is open

Mon, Tue, Thur, Fri 1pm to 2pm

Every week except public holidays.

No Appointments necessary.

A variety of procedures are available.

- Wound care
- Blood pressure readings
- Blood sugar readings
- Non-urgent ECG's
- Suture or clip removal
- Injections – with Dr's written order
- Other procedures that do not require a Dr.

Pathology clinic

Wednesday 9.30am – 10.30 am. No appointment necessary. Closed public holidays.

Other Services

Women's Health Nurse

3rd Wed of the month

Dietician and Diabetes Educator

2nd Thur of the month

Immunisations – 4th Fri of the month

Podiatry – for HACC clients – monthly

Ring the MPS for appointments for the dietician, diabetes, immunisation, podiatry and women's health 6459 8000

Child and Family Health – visits Delegate MPS on a regular basis ring Kirsty on 6458 5777 for an appointment.

DR SYMONDSONS VISITS TO DELEGATE

Residents of Delegate are reminded that Dr Symondson from Merimbula regularly visits Delegate one Friday a month.. The surgery is located in Hayden Street, next door to the Police Station.

DELEGATE HOSPITAL AUXILIARY

A.G.M. 10th JUNE 2018

The Delegate Hospital recently held their Annual General Meeting at the local Multi Purpose Service and the following Office Bearers were elected for the coming year:

OFFICE BEARERS:

President : Claire Strickland,

Vice President: Helen Jamieson

Secretary" Marie Smith

Assist. Secretary: Janice Lewis

Tresurer: Gail Smallman

Assistant Treasurer: Joy Bergin

Welfare Officer: Janice Lewis

The meeting was chaired by Christine Smith the Zone Representative for the Southern Region.

She congratulated all members on a job well done and remarked that although Delegate are a small Auxiliary, they certainly have big hearts.



The activity Group celebrated Helen's 80th Birthday at the home of Sandra Walker with a very nice luncheon and a birthday cake made by Alma.

Above: Gloria , Helen and Natalie

DELEGATE SCHOOL NEWS



JEFFREYS FAMILY FATURED IN THE LAND NEWSPAPER

A photo of John and Jen Jeffreys with their three children appeared in a full page Article in the June 28th edition of the Land Newspaper.

The article described the Jeffrey's family adoption of dual-purpose crops in the traditional grazing country of NSW's south-eastern highlands. Their latest experiment is grazing cattle on dual-purpose canola. Below we have printed some of the article.

"Brothers John and Will Jeffreys operate Delegate Station Pastoral Company over three farms in the Southern Monaro. While it's taken more than 10 years of trial and error and system and variety testing, dual-purpose cropping does two things. It allows us to sow early to accumulate dry matter prior to winter and it pushes us out of the frost window at the other end of the season. This creates the potential to nearly double income per hectare through meat and grain revenue."

The Jeffreys started growing dual-purpose cops in 2006 and learnt through trial and error, testing new varieties as they were released. John and his wife Jen oversee the farms, while Will and his wife Meg live in Bungendore where Will works in the meat processing industry and handles their lamb marketing.

Last winter John decided to put young cattle in. "Carrying young cattle through winter can be a challenge here, and we only do it about one year in every three" he said. "We usually feed enough to maintain them, but most of the fattening is done in spring on low-cost perennial pastures."

John said there was a fine line between fully utilising a dual purpose crop and overgrazing. "You can't overgraze canola early on in the leafy stage, but you have to be careful when you get close to lock-up" he said. According to John a good grazing canola crop usually produces 3-6 tonnes of dry matter per hectare and grows 400-600kg of lamb/ha..

We are predominantly a lamb enterprise and wherever we can we maximise our stocking rates through the winter with lambs, not cattle.

"However, after doing this I'm confident that, given another scenario where we think there is a dollar to be made from cattle, we will manage our grazing canola to chase the sheep with a mob of cattle."

R: Jen and John with their son and twin daughters.

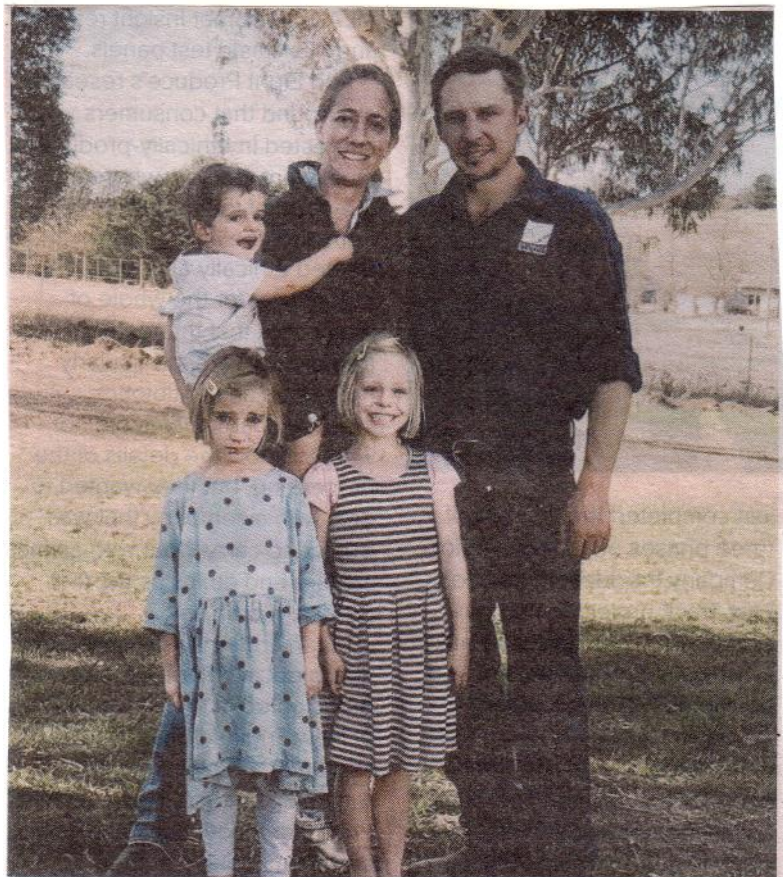
The area they own is 4,000 ha. Enterprise: Prime lamb breeding and trading, dual purpose cropping of canola, wheat and barley, cattle breeding and trading.

Livestock: 9,000 composite ewes and 200 Angus cows.

Pasture: Breeding pastures and phalaris, fescue, sub and arrowleaf clover. Finishing pastures are chicory/perennial clover or Lucerne.

Soil: Granite (35%) sedimentary loam (50%) and basalt (15%) soil types.

Rainfall: 550-750mm across the three farms.



PROPOSAL TO SUPPLY BORE WATER TO DELEGATE TOWNSHIP

Of course we had heard the rumours about sinking a bore to supply Delegate with water, but thought they just thought bubbles, as Delegate sits on one of the best rivers in the whole of the Amalgamated Shire. Unfortunately it has come to our knowledge that the Snowy Monaro Shire are in fact seriously considering a bore for Delegate.

Whilst Bores are often the only option in dry areas, the water is often high in mineral content, very hard and requires the addition of several chemicals to bring it up to standard.

Knowing that the State Member Mr John Barilarlo had allocated 15 million dollars to the Shire for a water treatment plant for Delegate and to upgrade Bombala's water supply, members of the DPA took the opportunity to meet with the local member at Nimmitabel recently. During that meeting Mr Barilarlo reinforced his commitment to a suitable water treatment plant for Delegate and said that the money he had allocated was ample to fix both Delegate and Bombala's problems.

We have seen NSW Government prices showing that in fact a bore would be cheaper to install, but if our local member has allocated money for a water treatment plant, why we ask are the Shire considering a bore. It seems very strange that such a controversial action would be considered without any consultation with the residents of the town.

DELEGATE GOLF CLUB NEWS

Following the Annual General Meeting a new board has been elected at the Delegate Country Follows as follows, Doug Cameron, Peter Jeffreys (Sec/Treas) Raymond Kading, Peter Stewart, Bill Bateman (President) Patricia Campbell, Carl Crotty (Retiring President)

Carl Crotty who has given years of service to the Club has retired due to ill health and we thank him for his tireless dedication to the club and wish him all the best. It was unanimously decided at the meeting that he be granted Life Membership.



HERE & THERE

Many Happy Returns to all July Birthday people, including Robin Mikula, Su King, Josh Stuart, Kaye Reed, Bradley Matthews Hslen Nocny.



Former local Kaye Pagden is turning 90 this month and will celebrate with her family on the 14th July. Kaye came to Delegate with Soldier Settler husband Graham and two small children in the 1950's. On retiring they moved to Tura Beach and spent many happy years there before the death of Graham. Kaye is quite independent and lives on her own.



The Bendoc Bus will not be going to Merimbula in July, due to lack of numbers. Hopefully August will see people out and about again for another trip to lovely Merimbula.

Bendoc Fishing Club held their annual wind-up in May and the results were:

Juniors. Biggest trout—Zane Jones, Boggest Redfin, Lydia Jamieson. Biggest Blackfish - Anna Cameron. Biggest Bag

Eels Aspen Cameron, Encouragement Award— Callan Jamieson.

Seniors:

Biggest Trout—Mick Hawkins, Biggest Off Comp Trout –Lance Matthews. Biggest Bag Eels— Peter Elliott.

A "Why Not Me" Keyring went to Aaron Voveris for not being able to catch a fish all season.



At long last there is movement on the windsock with the concrete foundation being laid. Now we await the installer to transport and erect the pole and Solar equipment.



Work has commenced on the upgrade at Bill Jeffreys Park, with concrete paths being laid, the next step will be new toilets in the amenities block and we are waiting on Jim White, former handyman at Bombala Shire to find time to do the work. It seems that he is the only employee with such skills in the whole of the amalgamated Shire and finds himself from time to time sent to Jindabyne on a job.

There will be a series of forums about making more from sheep to be held on 24th, 25th, 26th July. The local forum will be at the Alpine Hotel, Cooma on the 24th July and will feature several guest speakers



There was a good attendance at the Heritage Weekend meeting on the 24th June to make plans for the two days which will feature an old time games morning at Bill Jeffreys Park with lots of stalls and a barbecue lunch. In the afternoon the Settlers Hut Committee will be putting on tea and damper in the afternoon with wine and nibbles later in the evening. This will be followed by dinner and music at the Country Club. On Sunday a Church service to commemorate the end of WW1 will be held followed by a walk into town along the old route for those able. Federal Member Mike Kelly, will be unveiling the Men From Snowy River Plaques and lunch will be provided at the School of Arts.

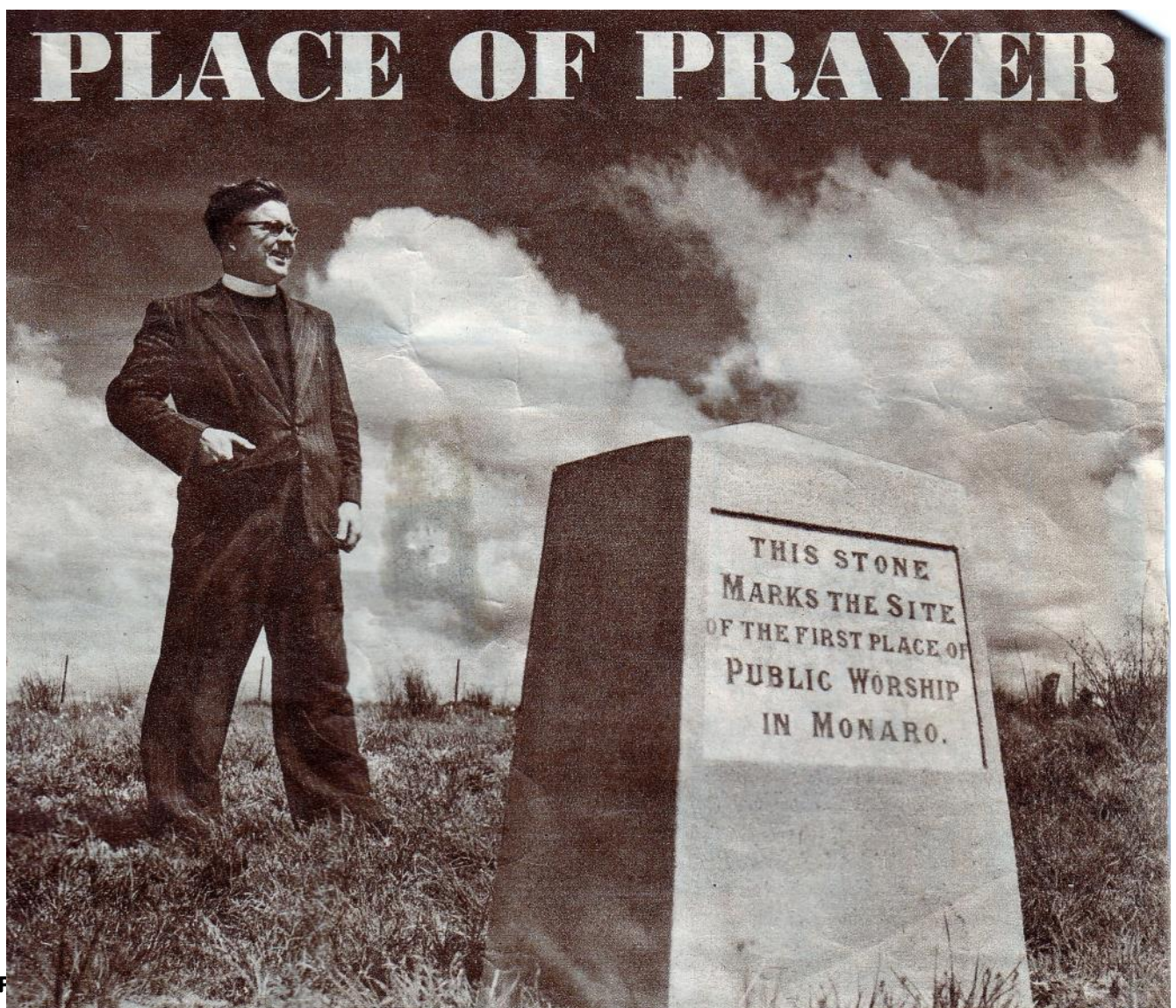
Esther Ingram and Jasmine Mclaughlan celebrated a joint baby shower at Oaklands in Pambula on Saturday. Both are due in August.

LOOKING BACK

The photo below of Anglican Rector Rev. Edgar Rolfe taken near the stone marking the first place of Worship on Monaro was given to us by Mrs Clare Strickland of Bendoc. It was accompanied by an article by Women's Weekly staff reporter Barbara Richards, where she and staff photographer spent a week-end in Delegate for the 75th Anniversary of the Anglican Church. The article says that left Sydney at 5.45am, drove the 337 miles south and had tea with the rector and his pretty blond wife. They then changed and attended the Ball, where they were required to judge the Belle of The Ball. Joan Elliott of Bombala was first choice with another Bombala girl Alison Bowtell being judged Belle of the Ballerinas. The next day they visited the Delegate Cemetery and where a flat impressed area of 15 x20ft was pointed as the spot where the first church on Monaro was built around 1845, being called the 'Deligat Chapel'. The walls were rough wooden slabs and the roof was thatched with grass.

Unfortunately there is no date on the cutting from the paper, but the article mentions that the local policeman was George Cook, who was here over 60 years ago. The population at that time was 449 people, 112 dwellings and 1029 people in the district.

It is timely that we received this article now, as on the 28th October this year during Delegate's Heritage week-end there will be a service held at the Cemetery to mark the end of WW1 and the return of the men from the war including the Men from Snowy River.



Community Information

EMERGENCY / AMBULANCE: 000

FIRE: 000

POLICE

Delegate: 6458 8044

Bombala : 64583444

Cooma: 6452 0099

Bendoc: 6458 1523

HOSPITAL: 6459 8000

DOCTOR: 64951369

CHURCHES

Catholic: Father Mick McAndrew 64522062

Sister Teresa Keane: 6458 3045

Services: Delegate Saturday 6:00pm

Liturgy of the word and Holy Communion

Bombala Sunday 9:00am

Liturgy of the word and Holy Communion

Anglican: Rev. Robert Lindeck 6241557 Mob.

0408531544

Rev Judy Holdsworth—64583513

Services: 11am every Sunday..

COMMUNITY HEALTH (3 days per week)

Generalist Community Nurse –Monday, Thursday, Friday

Wellness Clinic—Monday , Tuesday, Thursday and Friday 1pm to 2pm

Pathology—Wednesdays 0930-1-3- hours

Immunisation Clinic—Fourth Thursday from 1100hours.

Podiatry Clinic

Victorian Visits Tuesdays

Call MPS 64598000

Healthdirect and GP helpline 1800022222

MONARO FAMILY SUPPORT SERVICE

Bombala Office: 6458 4888

open Tues to Thurs - 9:00am to 5:00pm

COUNCIL CHAMBERS: 6458 3555

DELEGATE PRE-SCHOOL: 6458 8196

DELEGATE PUBLIC SCHOOL: 6458 8183

DELEGATE PROGRESS ASSOCIATION

RTCT Centre - 6458 8388— dpaoffice@bigpond.com

Newspaper: delegateprogress@exemail.com.au

NRMA/RACV: Jack Stewart: 64588047

TUBBUT ACCESS CENTRE: 6458 0295

DELEGATE CARAVAN PARK: 64584047

Delegate Progress Association Inc.

66A Bombala Street

DELEGATE NSW 2633

PH 6458 8388 Fax 64588 374

E-mail dpaoffice@bigpond.com

delegateprogress@exemail.com.au

(for paper)

‘Delegate Doings’ Subscription:

\$38.60 by Post

Email \$16.50.

Cash or Cheque payable to

The Delegate Progress Association Inc

Amount \$ _____

Name

Address or email:

The Delegate Doings is published by the Delegate Progress Association. We welcome information about meetings and reports on functions and other activities of local people and organisations, factual historical articles and poetry etc. We do not publish letters to the editor. The publisher accepts no responsibility for any advertisement, or articles. Any advertisement or article is published at the risk of the contributor, who accepts liability for any intended publication. All such contributors agree to indemnify the publisher and warrant that the material is accurate and is neither deceptive or misleading, in breach of copyright, defamatory, or in breach of any other laws and regulations.

ADVERTISING IN THE “DELEGATE DOINGS”

Spot Ad:	1	6	11
\$5 cash—\$7.50 a/c	Issue	Issues	Issues
1/4 Page	\$17.50	\$87.50	\$157.50
1/2 Page	\$35.00	\$175.00	\$315.00
Full Page	\$70.00	\$350.00	\$630.00
Back Page	\$80.00		
Full Page Insert	\$90.00		

Colour advertising: prices on application

JULY GARDEN

Camellias are very useful in our cold climate. They are evergreen and bloom in winter when little else pleases the eye. There are three species commonly cultivated in Australian gardens and there is often confusion about their differing sun tolerance.

My favourites are the *sasanqua* types which are first to bloom and trouble free. They have small dark leaves and form a dense shrub making them ideal for hedging. The flowers are usually single and fall cleanly from the plant making a lovely carpet of petals underneath. The real advantage of the *sasanquas* is that they are able to handle sunny spots and wind. One of the oldest varieties and best performers is 'Plantation Pink' (shown Left).



The *japonicas* are probably better known as they were extensively hybridised by an Australian, Prof. E. G. Waterhouse, the global pioneer of camellia culture. The leaves are much larger and glossy. They are therefore prone to both sunburn and frost scald if the sun falls on the leaves when they are still wet from dew or frost or to bleaching if placed in full sun. For this reason they prefer sun midmorning to early afternoon. The flowers, which are larger than *sasanquas* and very double, suffer a variety of problems too. Failure of the buds to open may be due to mite infestation or most often because the buds are still wet when the sun falls on them. The varieties with white or pale pink flowers are especially prone to this disfiguration. However the flowers are very beautiful. For the shrub to perform well it is a matter of taking a little more care to get the combination of cultivar and position right.

The *reticulatas* are less commonly seen. They have especially beautiful flowers which are very large, often about the size of a dinner plate. The plant itself is several degrees harder to cultivate and the shrub is not as pleasing in the garden because the leaves are large, sparse and dull green and the habit spindly. This seems to be common feature of any plant that puts a lot of its resources into the flowers. 'Ted Craig' at right has flowers 15cms across.



These three species have a shallow fibrous root system so can be safely grown near the house and it makes them particularly good as tub specimens. They all prefer a cool, well mulched, well drained, loose slightly acid soil.

There are other species from warmer parts of Asia but these are rarely available commercially. The most talked about is the yellow one *Camellia nitidissima* (formerly *C. chrysantha*) from Viet Nam/ China border area. It needs to be grown in dense shade, is a shy bloomer, prone to root rot and cold sensitive.

In the vegetable garden things are a bit quiet this month. Much production between now and summer relies on the *Brassica* family. This includes cabbage, kale cauliflower, sprouts, broccoli and most Asian greens. The most devastating pest is the caterpillar of the white butterfly. If the butterfly is prevented from laying eggs on the leaves the problem quickly disappears. I have found that ordinary orchard netting stretched over the bed prevents access of the butterfly to the plants.

If you see a group of yellow cylindrical eggs with a little fluff about them on the underside of the leaves nurture these as they are the eggs of the tiny parasitic wasp that is the natural enemy of the cabbage white butterfly caterpillar. One strategy in integrated pest management (IPM) developed in Europe is to grow a row of flowers amongst the Brassica crops to encourage these wasps as the adult wasps feed on nectar. Research has also shown that the female white butterfly can detect if there are numerous eggs already present on a particular plant. This will cause her to choose another plant that is better site to lay her eggs to order to give her offspring the best chance in life.



Grey Aphids are also common in winter spoiling sprouts and broccoli in particular. They are best hosed off with blast of water aimed right into the leaf axils holding the leaves apart with the other hand. Not the best job on a cold day but better than spraying poison. Do the water blasting just as you are going inside for the day and follow up with a hot shower and a celebratory cuppa!