

November 2012

Delegate Doings



Delegate Progress
Association

\$1.20
incl. GST

ISSN 1446-6716

Volume 11, issue 11.

BUNDIAN WAY GALLERY OPENING

It has been all systems go at the Rural Transaction Building for the last few weeks, preparing the rooms which were part of the old Bank Building for the new Aboriginal Gallery. Two of the artists Cheryl Davison and Ken Atkinson visited the premises last Thursday and were very pleased with the setup.

There is still some work to be completed before the opening on December 1st, when it is expected there will be a large number of visitors. Cheryl Davison is a well known artist who has exhibited in the National Gallery, ACT, while Ken makes unusual Burrawong leaching baskets from natural materials. Lee Cruse, whose painting appears on the invitations and posters does beautifully detailed work sometimes taking months to complete.

Cheryl will come to Delegate on Thursday before the exhibition opens and will spend Friday hanging the art works. She will open the Gallery on Friday from 9am, for visitors prior to the official opening ceremony which takes place at 2pm.

The Borderline Gallery section of the building is also opening a new Spring into Summer exhibition on the same day, and many locals will be showing their art and craft. A final working B was held on Saturday 28th October to clear the hallway, to allow more hanging space and move the Tourist Brochures to a adjoining room. There will also be a permanent space made for the local school to hang their art.

R: Cheryl admiring one of the scarves on sale at the Borderline Gallery. She subsequently purchased the scarf and wore it home.



Next Issue: 14th December

then: 4th February

and: 1st March

Inside this issue:

Hospital Auxiliary	3
Mike Joffe Book Launch	4
Shannen's 18th	7
Tribute to Norman	8
School news	10
Here and There	13
Looking Back	14

Dates for your Calendar

- 3rd November Garden Day Bombala
- 4th November Writers Workshop
- 10th November Snowy River Muster
- 10th November Car Club visit Delegate
- 10th November Meeting Art Group in Bombala
- 25th November Ando Arts and Crafts
- 1st December Opening Bundian Way Gallery
- 2nd December Golden Age Party
- 13th December Lions street carnival Bombala

QUOTES FOR NOVEMBER

If your ship doesn't come in, swim out to it.

Politics is the only business where doing nothing other than making the other guy look bad is an acceptable outcome

LAUGHTER THE BEST MEDICINE

A middle aged lady joined an aerobics class for the over 50's. She bent, twisted, gyrated, jumped up and down and perspired for an hour, but by the time she finally got her leotard on, the class was over.

GALLERY FLAT OPEN FOR BUSINESS

With increasing demand for accommodation, the Delegate Progress Association have decided to develop the small flat at the back of the Rural Transaction Centre as fully furnished overnight/week-end accommodation. It has one double bed and the option of an extra single bed. There is a separate bathroom, laundry, kitchen and TV viewing area.

SNOWY RIVER MUSTER

Musicians and singers are being mustered from far and wide for the annual Hospital Auxiliary fund raiser, the Snowy River Muster on Saturday 10th November. As well as top class entertainment, there will be the usual excellent dinner provided by the ladies. There is also a monster raffle, the first prize being a large barbecue, a leg of ham 2nd prize and a bottle of whisky for 3rd prize

FORTUNATE ESCAPE FOR SCHOOL CHILDREN

What could have been a serious accident on the highway 10 kms north of Cooma, was averted by the quick actions of teacher Warwick Long. A bus carrying 40 school children from Bombala High veered to the wrong side of the road and went up an embankment, when the driver lost consciousness. Warwick, who was seated at the front of the bus was able to grab the steering wheel and steer the bus on to the right side of the road and apply the brakes.

When it came to a standstill it was teetering over another embankment. Passers by stopped to help, including a nurse who was able to check on the children, who thankfully were not seriously hurt. Naturally after such a frightening experience, some were quite traumatised, including Warwick Long, who will probably have nightmares for a long time, knowing what would have happened if traffic had been coming the other way.

The Delegate Hospital Auxiliary Luncheon

The Delegate Hospital Auxiliary held their annual luncheon at the Craigie Fire Shed on Wednesday 17th October. They hold this event each year to fund two delegates to attend the United Hospital Auxiliaries annual convention, which this year was held in Sydney. As usual the delicious lunch was enjoyed by all, with Aurora Reed being the lucky winner of the raffle. It was also Val Crawford's birthday and she was presented with a bottle of wine by Gail Smallman.



Heather Auxiliary President welcomed visitors, Karen Sebire, Aurora Reed, Sue Walcott, Val receiving wine from Gail.



Golden Age Party

Sunday 2nd December

Delegate Country Club

Bookings at the General Store and on 64588167



DELEGATE MULTI PURPOSE SERVICE

Top: Mrs. Betty McDonald celebrated her 91st birthday recently. Pictured with her daughters Dot McDonald and Marjorie Price.

Right: Evelyn Walker pictured with her father Horst Weighardt on the occasion of his 83rd birthday.



MICK JOFFE BOOK LAUNCH

Two Delegate people visited the Bombala Library for the recent book launch of the very impressive book written by Mick Joffe covering the pioneers and descendents of pioneers of the Snowy River, Cooma area. It is beautifully illustrated with photos and caricatures by Mick himself.

Below: Evelyn Davies and Sharon Buckman with book author Mick Joffe.



Delegate Café

Dont pay \$5.99 for new releases online

DVD RENTAL PRICE DROP

Commencing 8th October

NEW RELEASES \$4.50 OVERNIGHT

Weekly rental \$3.00 or

2 for \$5.00

3 for \$6.00

4 for \$7.00

5 for \$8.00

6 for \$9.00

Tel (02) 6458 8171

Pizza available most Friday & Saturday Nights

DELEGATE HOTEL

Your host: Graeme Payten

Accommodation
Counter Lunches

**Don't Forget your
Melbourne Cup bets**

Sky Channel & Pub Tab,
ATM and Eftpos

Ph: 6458 8091

TALBOT TRANSPORT



LIVESTOCK & GENERAL

1 Hensleigh Street, DELEGATE 2633

Mobile: 0418 516 076

Phone: (02) 6458 8085

Fax: (02) 6458 8055

DELEGATE FRUIT BARN

Alana's

43 Bombala St., Delegate.

Open 7 days

From 7.30am till 6pm week days

Saturday— 9am till 1pm

Sunday—9am till 1 pm.

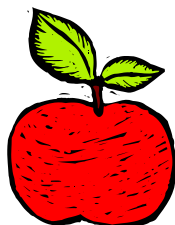
Public Holidays 9am till 1pm

Specialising in:

- Personal service.
- Fresh Fruit & Vegetables
- Groceries and Frozen Food
- Confectionery and Ice Creams

Eftpos

Phone (02) 64588051



Campdraft School at Delegate

A very successful camp draft school was held on the 14th/15th October at Delegate. Under the expert tuition of Ian Francis of Windera in Queensland, 13 students were put through their paces. Campdrafting has become very popular and two of the very keen participants have attended a number of classes. Yvonne Camm did her usual excellent job as first aid officer.



Book Launch Hilda Rix Nicholas

If any of you find yourselves in Canberra on the 22nd, there is a book launch at the National Gallery for: *In Search of Beauty: Hilda Rix Nicholas' Sketchbook Art* by Karen Johnson. If you go on to the Nat Library website or try eventarc.com, you can register. It's a free event, but I wouldn't wait too long to commit.

HISTORY OF THE SNOWY RIVER MARCH

The Delegate Progress Association recently received a grant of \$1200 towards the publication of a book on the Men From Snowy Recruitment March which began in Delegate on 6th January, 1916. A re-enactment of the happenings in Delegate on that day took place on the 90th Anniversary. In 2015 the 100 years anniversary will be celebrated by a re-enactment of all the recruitment marches which took place during WW1, the most famous of these being the Cooee March.

In 2006 the DPA published a booklet about the history of the Snowy River March, and this was sold on the day of the re-enactment, but it is planned to do further and more detailed research on this very interesting chapter in local history. We have already been contacted by the Jindabyne Historical Society who are researching the history of the men from their area who joined the march.

Below: Scene from the 90 year re-enactment



LANDMARK

an AWB company

Delegate
Tel: 6458 8004

a.h. - Justin Lewis
Ph: 6458 8106
Mobile 0429 991 240

Livestock
Merchandise
Insurance - Wool
Finance - Fertilizer

*Delegate
Hair Boutique*



Open
All Day Fridays
Delegate School
of Arts
Call in on the day
or telephone
6458 7240
For an appointment

**PLUS For all
Your Floral
Arrangements**
weddings,
Birthdays,
Anniversaries,
Wreaths and
Private
Functions

Phone Pam
on 6458 7240



HAPPY 18th BIRTHDAY TO SHANNEN TALBOT

Shannen recently celebrated her 18th. Birthday at the Delegate Country Club, where she was joined by around 80 family and friends. A DJ provided the music for the occasion, and the younger guests stayed on dancing and

enjoying themselves until 3am.

Shannen has been busy sitting for the Higher School Certificate at Bombala High, and hopes to go on to tertiary education to study for a career as a primary school teacher.

R: Shannen pictured here in front of her birthday cake with her parents Norman and Philomena



Tribute to Norman

*If I was asked about god, I would say "O GOD" and give a silly grin.
G'day, I'd say, Norm Preston is the name,
just a bloke from the bush down Delegate way,
With the mountains and the Snowy River running through my veins.*

*The mountains were my second home,
the Snowy Rivers roar will live on in my head for ever more.
I loved the mateship around the camp fire,
with our backs against some logs, we would have a few rums,
a lot of laughs, with our audience the stars and a few loyal dogs.
I had a little family and none of us knew
how short our time was together the years too few.
I carry my sorrow quietly in my heart,
to them my thoughts do fly when I am alone,
that's when a man can cry.*

*Now I am older and not in the best of health,
I lie in my hospital bed,
And wonder how it came to this although I have never said.
But I am a lucky bugger for the staff treat me like a king,
always with a bit of cheek, always with a silly grin.*

*If anyone asked me about god, I would quietly say,
Thank you lord for your love as you take this humble bushy away.
In good hands I will be when the angles call.
I'll see family and friends one and all.
I'll be at peace as I take gods hand,
for I know he will understand,
And I will say G'day, Norm Prestons the name,
Just a bloke from the bush down Delegate way*

Written by Margaret Baker Callaghan

DELEGATE PUBLIC SCHOOL VEGETABLE SEEDLING FOR SALE

Plants will be available outside the
Post Office throughout November

Punnets are \$3 and tubes \$2

This year we have made the following varieties

Cucumber - Crystal Apple

Long Green

Burpless

Lebanese

Pickling Gherkin

Zucchini

Pumpkin - Jap

Butternut

Australian Ironbark

Capsicum - California Wonder

Tomato - Roma (all purpose especially sauce and dried)

Stupice (medium fruit, early maturing, cold tolerant)

Tommy Toe

Ibridio hybrid truss type

Oxheart (good in polytunnels)

Black Krim no acid

Silverbeet - Red Stem (nice in the flower garden)

Bush Beans Brown Beauty

Butter

Hawksbury Wonder

Basil, Watermelon, Rockmelon, Eggplant, Chilli - coming soon

There is also mint/apple mint and onion
chives in 100mm pots

“Thank you to all who prepared sandwiches, slice or cake for the Weather Trial at Tombong, particularly given the short notice! We raised \$300 from the event. Thanks again! Delegate P & C Committee



DELEGATE SCHOOL NEWS

In the Stephanie Alexander Kitchen Garden Program the students, in the past weeks have been cooking things with a Mexican theme Nacho, Enchilada, Spinach Quesadillas and Tortillas. In the classroom the students made their own paper pizza with toppings by using fractions and weight measurements such as half a cup, half a kilo, then went on to write about what fractions they used when making their pizza and the older students about decimal and percentages of the pizza.



In the afternoons the children went into the garden to prepare more produce to harvest whether that be weeding or planting new seedlings to grow. We also sell our seedlings to the public. In November outside the



post office seedlings will be available this year. Keep an eye out for our flyers around town, Susan Tocchini is our garden specialist.



This is a great program so if you would like to be involved in this wonderful program please contact the school.

On the 29th October the students of Delegate Public School were treated to a performance called, 'Then & Now' which looked at the determination, courage and good humour of Australian women. Their story teller, Louise, used visual aids, puppets and costumes to transport them back in time to explore the difference between the way things were done compared to now. The students learnt about Elizabeth Hayward, a 13 year old convict, Caroline Chisholm and Mary Lee. They discovered why it took women so long to dress and looked at some tools used back in the good old days.

Pirate Day

In the last week of term 3 it was "Talk Like a Pirate" Day. The students from Delegate Public School took a sword or two plus a pen, put wind in their sails to produce some descriptive writing. They also cooked up a pirate storm in the kitchen with pie rates, tri-corne, pride grumble and hard tack. A great day was had by all.



Ahoy me names captin
morris, I am pirate
(Morris Kinder)

Im 5 foot tall and very very
black I have not had a bath for
a month we have been sailing
threw bad weather and me ship
skull and bones is very sick
(Bryson Yr 5)



Your welcome to join me
crew me ship is armed with
fifty cannons, me arch en-
emy is capen Wazat she al-
ways gets away but ill get
her soon (Archie Yr 6)

I am a pirate hunting
(Hunter Kinder)



Me dad left a treasure
map with me and it is on
an island called pleats Is-
land, right now Im on my
way arrrh! (Faith Yr5)

DELEGATE COUNTRY CLUB

For the Information of Members & Their Guest.

**** Coming Events ****

Bookings now being taken for Christmas parties

The weather has now warmed up and its time to dust of those clubs and come and have a game of golf.

The course is in tip top condition.

Come and enjoy it.

**GOLF SUNDAYS 1PM HIT OFF.
ALL WELCOME!**

Every Friday Night!!!!

3 Raffles, 3 Chances

Delicious Meals,

Great service

And

Courtesy Bus to your door!

It's Your Club !!!!!

USE IT !!!



RETURNED AND SERVICES LEAGUE OF AUSTRALIA

NEW SOUTH WALES BRANCH INCORPORATED
"The Price of Liberty is Eternal Vigilance"

REMEMBRANCE DAY SERVICE

There will be a Remembrance Day Service held at the Delegate Cenotaph (Cnr Victoria Pde & Bombala STS, Delegate) at 11am Sunday 11 November 2012.

This will be a short trial service to gauge interest. Hopefully we will have a good turn out so we can continue to commemorate this important event on a yearly basis.

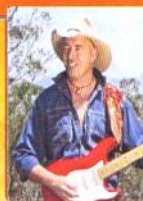
We look forward to seeing you there.

Delegate RSL Sub Branch

DELEGATE HOSPITAL AUXILIARY PRESENTS

THE SNOWY RIVER MUSTER

FEATURING



GARRY CARSON JONES



BEV STOKES



Mat Kimber



VICKI WALSH

And many more artists from near and far

**Saturday 10th November
DELEGATE EXHIBITION HALL**

Commencing at 4.00pm with a break for dinner at 6.00pm.
2 Course Meal

BYO LIQUID REFRESHMENTS

Admission:

Adults \$25.00

Family \$55.00 (2 adults, 2 primary school children)

High School Students \$15.00

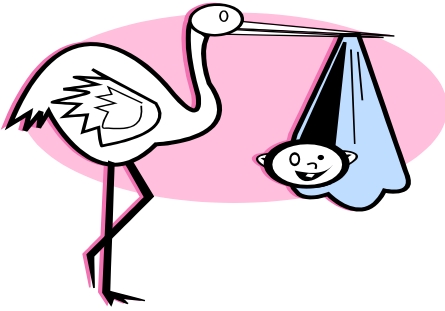
Child under 12yrs \$5.00

BOOKINGS: Gail 02 64587128 Heather 02 64588077

All proceeds to Delegate Hospital Auxiliary

HERE & THERE

Congratulations to proud parents Esther and Jamie Ingram on the arrival of their first child, a little girl born on 8th October at Cooma Hospital weighing 6lbs.8ozs. She is to be named Harlen Myra.



We apologise for an error in reporting the funeral of the late Norman Preston. His sisters who survived him are Marge and Dorothy, a sister Nancy and brother Tiny predeceased him.

We hear of the death of a former resident of the Tubbut area, Bob Stokes who was living in Sale at the time of his death. To date we have no further information.

The biggest crowd ever was present at the Bombala Races for Caulfield Cup Day. With lots of visitors including representatives of Dongwha who are the sponsors of the Cup.

Fashions in the field were well supported, with both ladies and men dressing up for the occasion.

The winner of the Dongwah Timbers Bombala Cup was the Rajah Boljun trained "Outside" from Canberra.



The annual Phillip Island Bike races see more and more Motor Bikes travelling through, keeping the local Cafe and Hotel busy, having meals or staying overnight. Unfortunately this year there was a serious accident on the Delegate River road, which resulted in serious injuries and a fatality.

Happy birthday to the following folk who celebrate their birthdays in November—Terry O'Hagan, Norman Talbot, Jessi Reed, Jack Reed, Patsy Manning

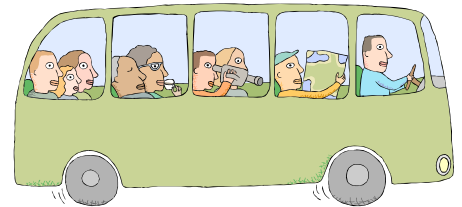


A Writers Workshop is due to take place on Sunday 4th November in the School of Arts, from 10am to 4pm. Kathy Kituai, an award winning poet, diarist and creative writing teacher, has facilitated creative writing courses in Scotland, NDW, SA and the ACT. Those wanting to participate are asked to register with Tubbut Neighbourhood House.



Bombala Shire have a new Tourism Project Officer—Mr. Steve Rickett. Steve is well known locally and brings new ideas to the Economic Development Department.

Another tourist bus is due on 15th. November. There are lots of attractions to view in Delegate, and the buses are usually short of time trying to take them all in.



The new Committees for the Bombala and Delegate MPS met at Bombala Hospital on Tuesday last for an inauguration day.

Alison MacTaggart of Southern NSW Local Health District, Coordinator and Bronnie Taylor representing the District Health Board both spoke of positive changes, which should see more community input to decision making.

We have heard of the death of a former Delegate man Kim Jamieson. Kim spent his early life in Delegate but unfortunately at this stage we have no other details.

The council held their October meeting in Delegate and prior to the meeting they looked over the various sites needing attention.

LOOKING BACK



Above: Present at the Presentation of Life Membership of the Bombala R.S.L. Womens' Auxiliary on Wednesday, 6th April, to their mother, Mrs. Mabel Elliott, were the members of her family.

Son, Laurie, seated beside his mother, and her daughters Una Collins, Lorna Callaway and Heather Commons.



Left: A young Flynn Callaway receives his Best and Fairest Award for Rugby League from the late Tony Elliott of Bombala.



Community Information

EMERGENCY / AMBULANCE: 000

FIRE: 000

POLICE

Delegate: 6458 8044

Bombala : 64583444

Cooma: 6452 0099

Bendoc: 6458 1523

HOSPITAL: 6459 8000

DOCTOR: 64951369

CHURCHES

Catholic: Father Paul Hothnance PP 64522062
Sister Teresa Keane: 6458 3045

Services: Delegate Saturday 6:00pm
Liturgy of the word and Holy Communion
Bombala Sunday 9:00am
Liturgy of the word and Holy Communion

Anglican: Rev. Denise Channon 64583018
64957040

Services: Rev Judy Holdsworth—64583513
5pm every Saturday.

St. Andrews Community Church—
To be Advised

COMMUNITY HEALTH (3 days per week)

Generalist Community Nurse –Monday, Thursday, Friday

Wellness Clinic—Monday and Thursday 0900-10.30

Pathology—Wednesdays 0930-1-3- hours

Immunisation Clinic—Fourth Thursday from 1100hours.

Podiatry Clinic

Victorian Visits Tuesdays

Call MPS 64598000

Healthdirect and GP helpline 1800022222

MONARO FAMILY SUPPORT SERVICE

Bombala Office: 6458 4888

open Tues to Thurs - 9:00am to 5:00pm

COUNCIL CHAMBERS: 6458 3555

DELEGATE PRE-SCHOOL: 6458 8196

DELEGATE PUBLIC SCHOOL: 6458 8183

DELEGATE PROGRESS ASSOCIATION

RTCT Centre - 6458 8388— DPAoffice@exemail.com.au

Newspaper: delegateprogress@exemail.com.au

NRMA/RACV: Jack Stewart: 64588047

TUBBUT ACCESS CENTRE: 6458 0295

Delegate Progress Association Inc.

66A Bombala Street

DELEGATE NSW 2633

PH 6458 8388 Fax 64588 374

E-mail dpaoffice@bigpond.com

delegateprogress@exemail.com.au

(for paper)

‘Delegate Doings’ Subscription:

\$26.50 by post (\$50.00 overseas)

Email \$14.20.

Cash or Cheque payable to

The Delegate Progress Association Inc

Amount \$ _____

Name

Address or email:

The Delegate Doings is published by the Delegate Progress Association. We welcome information about meetings and reports on functions and other activities of local people and organisations, factual historical articles and poetry etc. We do not publish letters to the editor. The publisher accepts no responsibility for any advertisement, or articles. Any advertisement or article is published at the risk of the contributor, who accepts liability for any intended publication. All such contributors agree to indemnify the publisher and warrant that the material is accurate and is neither deceptive or misleading, in breach of copyright, defamatory, or in breach of any other laws and regulations.

ADVERTISING IN THE “DELEGATE DOINGS”

Spot Ad:	1	6	11
\$5 cash—\$7.50 a/c	Issue	Issues	Issues
1/4 Page	\$17.50	\$87.50	\$157.50
1/2 Page	\$35.00	\$175.00	\$315.00
Full Page	\$70.00	\$350.00	\$630.00
Back Page	\$80.00		
Full Page Insert	\$90.00		

Colour advertising: prices on application

INTHE GARDEN—By Susan Tocchini

COLD DAMAGE

After some mild weather last Tuesday saw a sudden hard frost hit Delegate and surrounds with temperatures ranging from -3.9 to -6. Those European plants at the stage of just breaking dormancy were particularly vulnerable with their tender new shoots, flower buds and fruitlets decimated. Damage can be seen for example to the floral display of rhododendrons. Interestingly those cultivars in full flower have had their display cut short but not those still in bud. The plants themselves will not sustain structural damage as rhododendrons have a number of strategies to withstand cold. Most importantly they produce their new shoots only after the flower heads die gaining a time delay for the new leaf growth. Also to survive setbacks the plant does not have to rely on food stores made in previous seasons as the current leaves are still sustaining growth unaffected by a cold snap having been present all winter and fully hardened.

However it is amazing how parts of a plant may show differential resistance to cold e.g. the above instance of flower buds and fully open flowers of the rhododendron. The first few leaves of the annual sunflower are quite frost hardy giving a period of grace if they germinate before cold ceases, but this not so for tomatoes. This hardiness is essential to Sunflowers that have only one growing point so if it damaged the whole plant is lost but the tomato has many growing points and may regenerate from any leaf axil. The leaves of potatoes and dahlias succumb to the slightest hint of frost but the stems continue to push up and are capable of producing the new leaves fuelled by food stored in the tubers. There is little chance of disease establishing as long as the damaged foliage is left to dry out. However, if the gardener is too tidy and cuts below the damage in an effort to improve the appearance of the garden, bacteria will quickly colonise any wound made in these fleshy stems.

The survival strategy of some plants is to flower and produce seeds before the vital new leaves emerge. This is a common strategy in long-lived plants such as trees. The Golden Elms in the main street use this technique. First the flowers appear as reddish catkin-like structures followed by the lime green seeds that since they are green can photosynthesise their own food using their own chlorophyll. After the seed are shed, already dried out so they can float in the wind, the leaves emerge from different buds held dormant throughout the process. It is not threatening to the survival of the species if during their long life seed production fails in a few years but the delayed leaf burst is very significant to the survival of the individual. Pears and apples also have flowers and leaves in separate buds timed to activate sequentially but for us the loss of a season's seed and its fruit container is very disappointing. It is already obvious that this year's crops of apricots, cherries and plums have been affected.

Plants showing yet a different lifestyle produce leaves and flowers from the one bud at the same time so loss of these from a frost event can be significant to their survival e.g. Wisteria, Kohlreutia and Golden Ash. If the plant has sufficient food reserves stored in the woody parts new growing points may emerge (particularly from the base) but if newly planted the outcome is less sure. It is again a different scenario for those plants whose sap rises in Spring such as hydrangeas, grape vines and kiwi fruit. Ice crystals form in the sap bursting the cells which die. Sap can be seen to ooze from under the bark and rots enter the wounds leading most frequently to death of the whole plant.