

November 2016

1.50 incl.
GST

Delegate Doings



ISSN 1446-6716

Volume 15, issue 11.



ESCARPADE 2016 CAVALCADE OF CARS VISITS DELEGATE



A weeklong motoring adventure fuelled by fun, mateship and laughter! Fundraise and drive thousands of miles to help create a better quality of life for kids living with cancer. Join our wacky family for a week-long adventure of a lifetime, navigating off-road, through some of Australia's most scenic landscapes while raising essential funds for Australian children's cancer charity, Camp Quality.

215 supporters of the charity Camp Quality descended on Delegate for a well earned break and a hot lunch after the riggers of our scenic mountainous roads from Jindabyne down the Barry Way across McKillops bridge then onto Delegate.

"Jindabyne through Delegate and onto the Lakes Entrance with a total of 413km travelled. Day #2 was a hit! The countryside was fantastic crossing the border into VIC, the cars were revving and best of all the smiles on everyone's faces were from ear to ear." Escarpade face book page.

Local school children met Camp Quality Puppets, Kylie, Dean and Mel, who head out on road each day with the [esCarpade](#) cars dropping into schools to help dispel myths about cancer, create supportive communities and best of all bring laughter and positivity to their lives.



Next Issue: 9th December

then: 3rd Feb

and: 6th March

Inside this issue:

| | |
|-----------------|----|
| Escarpade Rally | 3 |
| Streetscape | 5 |
| Trivia Night | 7 |
| St Josephs News | 10 |
| Preschool news | 15 |
| Pony Club | 16 |
| Here & There | 17 |

Dates for your Calendar

- 11th November Remembrance Day
- 11/13th November Bombala Historic Engine Rally
- 18th November FAM—Country Club
- 26th November Wool Workshop—Tubbut
- 25th November Fancy Dress Party - Delegate Hotel
- 27th November Pony Club Gymkana
- 3rd December Anglican Parish Garden Day
- 3rd December Kids Christmas Party—Country Club
- 4th December Golden Age Party—Country Club

Golden Age Party
Sunday 4th December
Delegate Country Club
 Names to Marilyn 64588167
 Or at the General Store
 by 1st December

Fire Season Now in Force
Fire Permits Required
For all Burning Off
Report fires on “000”
Do not ring the local brigade

The AGM of the Cabanandra Campdraft Club Inc will be held at the Delegate Hotel on Tuesday, 15th Nov, 2016 at 8.00 pm

WOOL WORKSHOP

November 26/27th at Bonang

What do gum leaves, onion skins, dahlia flowers and parsley have in common?

They are among the many leaves, flowers and roots that have been used for thousands of years to add colour to fibres, yarns and fabrics.

On the 26th and 27th of November we will be looking at these and a few other vegetable sources of dye and some of the ways the colours can be extracted and the wool dyed.

Heather and Margie Stuart, from Mt Taylor near Bairnsdale, have many years' experience between them in spinning, dyeing and felting and will be also sharing some simple weaving techniques – small looms will be set up and wool supplied for participants to weave while the dye-pots are simmering. These pieces will be cut off the looms later, and weavers will have a piece that could be used as a small wall hanging or pot-holder or made into a pin cushion or similar.

The Riviera Spinners and Felters Group will have a few items for sale on the day, and will also bring fibres prepared for easy spinning if anyone would like to learn or try something different on the spinning wheel or a spindle. Heather and Margie are also experienced knitters and crocheters, so there could be help available to learn these crafts.

EsCarpade a CAVALCADE OF CARS



DELEGATE TENNIS CLUB THANKYOU TO THE COMMUNITY

Club president Michelle Ingram expressed her huge thanks to the Delegate community who supported the Tennis Club's fund raising efforts during the "escarpade" Car rally.

Soup and casseroles supplied by the community, were much appreciated by the participants who commented on Delegates hospitality and yummy food.

During lunch comments were heard by our wonderful volunteers, about how scenic our region is and that participants would return to explore some more.

Thank you to all who helped with this successful fund raiser!!

WAR MEMORIAL VISIT

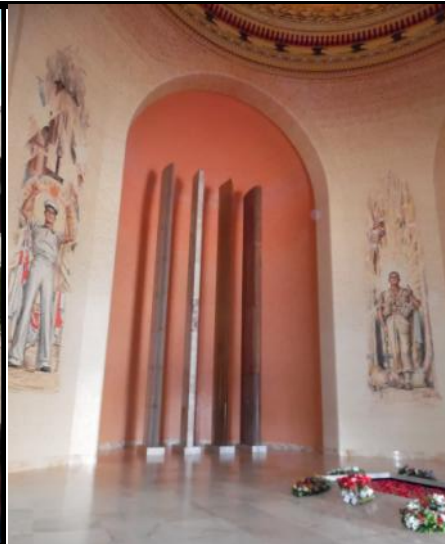
A group of locals including some of the Men from Snowy River Committee and marchers had an enjoyable visit to the Australian War Memorial on Thursday 20th October.

They travelled on the Bendoc Bus and on arrival met with others who were involved in the March, including two Light Horsemen from Bemboka and representatives of the Queanbeyan RSL Sub-Branch. On arrival, the group met with the Director of the War Memorial Dr Brendan Nelson and presented him with a gift for being Patron of the Men from Snowy River March. They then posed for a photo with Dr Nelson before moving on to inspect the War Memorial's wonderful display including a new exhibit of marble

'blankets' representing those servicemen and women who died in Afghanistan. It is pictured above and it is hard to believe that what looks like a folded blanket is actually done in marble.



Below: The group—on left is Robert Cook who marched with the group to Sydney and travelled from Gumly Gumly near Wagga to meet up with us. Below Right: Ellery Farren with Dr Nelson.



RETURNED AND

President. Phil Pope
Hon. Tres. Robyn Mikula
Hon. Sec. Maree Pope
Ph: 02 6458 8081



OF AUSTRALIA

NEW SOUTH WALES BRANCH
"The Price of Liberty is Eternal Vigilance"

SERVICES LEAGUE

Delegate RSL Sub Branch
57 Bombala Street
DELEGATE NSW 2633
Delegate.RSL@gmail.com

REMEMBRANCE DAY

FRIDAY 11 NOVEMBER 2016

SERVICE COMMENCES AT 10.40AM

AT THE CENOTAPH

(SCHOOL OF THE ARTS HALL IF RAINING)

POPPY APPEAL

Poppies available at the
Delegate General Store.

Proceeds go towards helping
veterans and their families



DELEGATE STREETSCAPE COMMUNITY

There are 6 areas of concern for the Delegate residents all of which need to be addressed in order to enhance our small town both to attract new residents and to attract tourists. These are listed in a priority order but would all need to be adequately fixed as soon as possible.

1 Town drainage issues.

There is little point in work done on any other project if the drainage problems are not addressed as good work could be ruined by one extreme weather event.

1. All storm water in all streets should be directed into the creek/channel running through the town in a substantive and effective way
2. Particular attention needs to be paid to Church Street and Orr Street where there are no gutters.
3. The storm water channel needs repairing and upgrading
4. Proper drainage for the Memorial park which becomes waterlogged after rain. This is a site necessary for visitors to the town
5. Kerbs and guttering need to be repaired and extended from the Snowy River men monument to the sculpture at the Northern entrance to the town.

2 Re sealing and re cambering roads

1. the main street to outer town limits
2. Re aligning and Sealing road to Showground
3. Sealing road to Caravan park

3 Footpaths

1. Footpaths extended from Snowy River Men monument to the sculptures at the Northern end of town
2. Footpath widened and upgraded in front of businesses and heritage buildings, particularly those difficult to maintain with mowing. Where trees have been planted paths designed to include them.
3. Provision of disabled access from the road to footpath at all public and business locations
4. Upgrading of aprons at service stations
5. Footpath at end of Platypus Walk to Orr Street

4 Heritage Concerns

A strong heritage focus will drive tourism in Delegate with Indigenous, Chinese and European historical values underpinning our town planning. The Bundian Way walking track is an exciting direction for the future. At the same time we can build on a shared history of the agricultural industries and the gold mining era. Our town character is almost untouched early 20th century and we wish to maintain this. We are unique, we are not a suburban shopping precinct and we wish to direct the tourist interest to the richness of our past, either 40,000 year indigenous walking tracks or 19th century small country town. Any project will be directed to tourist appreciation of this.

Improve signage throughout the area.

Develop a distinct heritage style for all of the signage

Have signs at major intersections in Bombala and at the Cann River turnoff, directing tourists to Delegate and the scenic route to Orbst

Within Delegate clear signposts to heritage attractions eg School of Arts, Settlers Hut, Aboriginal reserve, Galleries, Chinese Tunnel, Men From Snowy River monument, Old buildings, the historical churches etc

An information bay with pillars (ref. Bredbo War Memorial) detailed information, directions and photos, Site to be decided.

Improving the entry points to the town. A stone sign, plantings at the sculpture etc.

Renovating of old buildings in Delegate (heritage funding? support from council in seeking this)

Improved lighting at the monument, upgrade of site.

Continued work on signage and way points for the BundianWay.

5 Showground and Caravan Park

Accommodation is a continuing concern. Delegate is already stretched to limits to provide adequate and appropriate accommodation.

Provision of cabins at the caravan park

The upgrading of facilities at both the Caravan park and the showground

Covered walkways and areas at both

Improved access

6 Truck parking

Overnight parking and turning circle at the showground entrance

Clearly designated truck parking and caravan parking in front of Memorial park

Otherwise angle parking throughout the main street.

Jake Heffernan

GSE

**GET SWITCHED
ELECTRICAL**
DOMESTIC > RURAL > COMMERCIAL > INDUSTRIAL

ABN: 86484386605

Lic No. 276075C

0429 204 168
heff.gse@gmail.com

A NIGHT OF FUN AND GAMES

Contestants at the Combined Churches Trivia Night at the Country Club on Saturday night the 15th were scratching their heads as they tried to remember songs from the seventies, themes for well know movies, or the oldest to the youngest Beatle and many other questions relating to the theme of MUSIC, MUSIC, MUSIC. The comedy sketches which were shown on the screen between questions kept the crowd amused. As usual Greg Crotty delivered a very professional and well organised three hours of entertainment, which was enjoyed by all, even those who couldn't remember the name of Mrs. Slocum's cat, or which Australian singer recorded Que Sera.

The ladies representing the three churches, St Andrews, St Philips and St Josephs provided the necessary back up including serving up a delicious hot meal before proceedings began.

The night raised over \$1200 to be divided between the churches and was followed on Sunday by a special Mass at St. Josephs.

Below: Left: Members of the Crotty family who were the winning table: Right: Bernie, his eldest son and Scrub.

Bottom Left: Carol Graczol, Kathy Filtness and daughter Senead Cameron. Right: Bobby Lee Camm, Denielle Tonissen, and Marilyn Callaghan



Delegate Café

64 Bombala St Delegate

DINE IN - TAKE AWAY

OPEN 7 DAYS

Fruit & Veg - Groceries

DVD Hire - Eftpos

Tel (02) 6458 8171

Pizza available most Friday & Saturday Nights

ELGAS Distributor

Pickup Only (Sorry no Delivery)

DELEGATE HOTEL

Your host: Graeme Payten

**Accommodation
Counter Lunches**

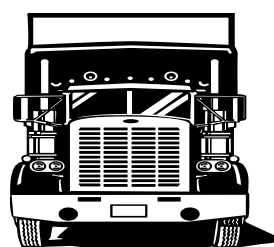
**27th Nov Sunday Sips trip to Pambula
\$5 Membership**

17th Dec Slippery When Wet

**Sky Channel & Pub Tab,
ATM and Eftpos**

Ph: 6458 8091

TALBOT TRANSPORT



LIVESTOCK & GENERAL

1 Hensleigh Street, DELEGATE 2633

Mobile: 0418 516 076

Phone: (02) 6458 8085

Fax: (02) 6458 8055

LANDMARK

an AWB company

Delegate
Tel: 6458 8004

a.h. - Peter Holt
Mobile 0427101418

Livestock
Merchandise
Insurance - Wool
Finance - Fertilizer

*Delegate
Hair Boutique*



Open
All Day Fridays
Delegate School
of Arts
Call in on the day
or telephone
6458 7240
For an appointment

**PLUS For all
Your Floral
Arrangements**
weddings,
Birthdays,
Anniversaries,
Wreaths and
Private
Functions

Phone Pam
on 6458 7240



“BY CRIKEY” STEVE IRWIN’S AUSTRALIAN ZOO IS WORTH A VISIT.

Some interesting shots of tigers at the Australian Zoo. On the left is two tiger cubs enjoying their bottles of milk being fed by their keeper. On the Right an adult female tiger shows how to completely relax.



NEWS FROM ST JOSEPH'S DELEGATE

Twelve months after holding centenary celebrations for the laying of the church's foundation stone parishioners of St Joseph's Delegate were back in party mode on the weekend of October 15th and 16th 2016. Those who have a connection to the church saw fit to be at the joyous occasion which marked 100 years of Mass being celebrated in the red-brick church. Many travelled long distances to be present.

Festivities began on the Saturday night with the parish holding an ecumenical trivia night at the Delegate Country Club in conjunction with St Andrew's and St Philip's churches.

Sunday saw parishioners gather at the Delegate Cemetery with Fr Mick MacAndrew for a blessing ceremony to honour families and pioneers of Delegate. Following the blessing ceremony Mass was then celebrated in St Joseph's Church. Mass was a lively affair with the church bell rung loudly and proudly and the choir, led by John Liston of Pambula, in full voice. The Delegate children added colour to the offertory procession under the guidance of Sr Teresa Keane. Fr Mick delivered a homily on Christian virtue and repeated the same address "Why Catholics Build Churches" as delivered by former Archbishop of Sydney, Michael Kelly, at the first Mass 100 years ago.

Due to the weather conditions the luncheon was transferred inside the parish hall with many reminiscing their days at St Joseph's. A new history display was also added for the occasion. A number of speeches and thankyou's were made and those present unanimously approved the hall be re-named as St Joseph's School Centre which acknowledges its past and present use by both the church and community. Some great improvements have been made to the centre and grounds over the past year and it is hoped to repaint the centre in the near future.

The organising committee would like to thank all those who helped in any way towards the success of the weekend. Below: Sr Timothy Monaghan & Sr Teresa Keane and the new history display.





DELEGATE COUNTRY CLUB

KID'S XMAS PARTY

Saturday 3rd December 1pm

BBQ Lunch

Adults \$5.00 Children Free

Bring a small gift for Santa to give to your child



Borderline Gallery

Xmas Gifts

Available now

Paintings, Photos, Pottery,



Woodwork, Knitting, Glasswork, Jewellery.



CFA TRAINING DAY

Mt Delegate Group captain Andy Bennett organised a wonderful training opportunity for the local brigades. Saturday 22nd Oct 8 volunteer lieutenants from Bendoc and Goongerah had training on how to run the domestic prop that was delivered to Bendoc last week. Sunday 23rd we had a gathering of some 34 plus brigade members from across District 11 inc Bendoc, Bonang, Goongerah and Delegate River.

Three volunteer trainers from Bairnsdale gave up their time to run members through a round robin training day. Thanks to Aaron Lee (Bairnsdale Captain), Les Beechley (1st Lieutenant - Bairnsdale) and Clint Pendergast (Fire fighter/BMT rep) for coming such a long distance to run us through the day.

Also a big thanks to all the members who attended on the day and made it a great success even in the snow, cold and wet conditions, but as we all know house fires do not pick the perfect weather to work in when it happens.



The day consisted on a brief, real life scenario of attending a house fire, real fire within the domestic simulator, radio operations, map reading and fire blanket/extinguisher usage. Everyone went away knowing a lot more then they came in with, it was a wonderful training opportunity with all members enthusiastic to get in and have a go. There were lots of questions answered and a great de-brief at the end.

Thanks also goes out to the lovely members who handled the logistics for the day and made sure everyone was fed and comfortable. Once again we thank all the CFA brigade members in the area, thanks to the Bairnsdale trainers and thanks to Mt Delegate Group for making this training day happen.

We will hold another training day on Sunday 6th November for those who couldn't attend and hopefully this will have the same success story, we would love to see some NSW crew attend, also any one else that has basic fire accreditation, full PPE is required on the day.

Coming up in CFA - Pre season fire briefing Bendoc DELWP DEPOT - Thursday 17th November 1700-2000 BBQ dinner provided. RSVP to Andrew Hammond 0351611328 or CFA

admin.d11@cfa.vic.gov.au.

CFA Open Day - Everyone welcome, we open our doors to everyone wanting to know more about CFA, also calling for new members to sign up. It would be nice to know that your home could be saved if by chance you have a fire. Date TBA





EAST GIPPSLAND
SHIRE COUNCIL

THE CAFÉ SESSIONS Workshop

All Welcome! Friday 18 November

10am – 6pm (BYO lunch)

Delegate Country Club

If you can't make the workshop come see the show!

THE CAFÉ SESSIONS

Delegate Country Club

\$20 - 2 course dinner from 6pm, book on 64588169

Show Starts 7.30pm (Donation appreciated)

Contact Tubbut Neighbourhood House 02 6458 0295

Show - FAM Events & Production's two woman sketch comedy show ***THE CAFÉ SESSIONS*** toured from Bright to Bundaberg during July/August presenting live theatre in everyday places. Now it's East Gippsland communities turn and FAM have added something extra special to experience.

Workshop - Join Jenny, Pauline & Bill as they share skills in creating original storytelling in a 5 minute (min) sketch/s format. Participants will be encouraged to share their own stories to form the basis of a working script that they will rehearse during the workshop and perform that evening in FAM's ***THE CAFÉ SESSIONS***. Armed with these skills community members will be encouraged to continue to create their stories and share via YouTube with the view to gather with other communities once a year for an annual festival of sketches.

The one day workshop from 10am till 6pm will cover:

Storytelling – the best performances are based in truth

- What story do you want tell?
- Where to begin
- The characters
- Performance anxiety – nerves and how to use them to your advantage

Don't panic and think everyone who participates has to act, because this is a collaboration of skills. Performance needs actors yes but it also needs ideas, writers, props and stage hands. It is a team effort that creates the magic that is live performance.

So come along get involved, bring your sense of humour and we'll have a **FAM**ulous creative time in your community.

Look up FAM at www.famevents.com.au and latest info about local theatre at <https://www.facebook.com/Borderliners/>

Delegate Multi Purpose Service

Wellness Clinic is held at the MPS, in Craigie Street Delegate. People come to the clinic for procedures and assessment by nursing staff.

The clinic is open

Mon, Tue, Thur, Fri 1pm to 2pm

Every week except public holidays.

No Appointments necessary.

A variety of procedures are available.

- Wound care
- Blood pressure readings
- Blood sugar readings
- Non-urgent ECG's
- Suture or clip removal
- Injections – with Dr's written order
- Other procedures that do not require a Dr.

Pathology clinic

Wednesday 9.30am – 10.30 am. No appointment necessary. Closed public holidays.

Other Services

Women's Health Nurse

3rd Wed of the month

Dietician and Diabetes Educator

2nd Thur of the month

Immunisations – 4th Fri of the month

Podiatry – for HACC clients – monthly

Ring the MPS for appointments for the dietician, diabetes, immunisation, podiatry and women's health 6459 8000

Child and Family Health – visits Delegate MPS on a regular basis ring Kirsty on 6458 5777 for an appointment.



\$50 000 grant for Delegate projects

On Monday 24th October the DPA received the “cheque” for \$50 000 from John Barilaro state MP

The cheque was presented at the Delegate Settlers Hut.

The grant which comes from the 2016 Snowy Monaro Community Grants program is for infrastructure which will promote tourism in the Delegate area.

Specifically the grant will be used for signage and viewing places along the Bundian Way and for repair and restoration of the Settlers Hut

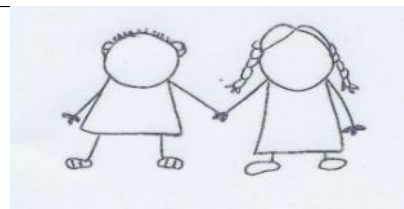
Mr Barilaro was accompanied by the Snowy Monaro Council Administrator Mr Dean Lynch and the General manager Jo Vecchio.

The visitors were given a traditional afternoon tea of billy tea and damper and taken on a guided tour of the Hut. This led to a whimsical walk down memory lane for all three men.

They were very impressed with the efforts of the town to restore and maintain this wonderful heritage site.

Mr Barilaro emphasised the importance of heritage in Delegate and commended the town on its continued focus on A Shared History for its potential tourist attractions.

Preschool News



Over the past few weeks our preschoolers have become scientists! They have conducted several experiments around seeds and plant growth. We have investigated the viability of old seeds and made underground viewing pots planted with zucchini, radish and beetroot seeds. The children were also very excited to take their Lima bean experiments home. It has been delightful to receive feedback from families on how much the young seedlings have grown. We made a delicious Greek Lima Bean and Tomato Bake. Everyone enjoyed a taste, even though Sherrida didn't cook the beans long enough. A trick to remember for next time!

Our strawberries, kindly donated by the French family are coming along really well and we can hardly wait to harvest our first crop.

Visiting Performance

4th November *Drumbeat* with Mark Stewart 9:30am–10:30am Where: Bombala Preschool

Delegate Preschool families have kindly been invited to this performance. There will be no cost, however parents will need to take their children and stay with them during the performance. Younger siblings are also welcome.

Working Bee

12th November 10am – 12 noon

Families and wider community are invited to join us for a couple of hours at our annual Working Bee. We are going to do some gardening, build our compost bay, replace the shade over the sandpit and of course, enjoy each others' company.

'Do in' it for Delegate' Dress Up Do

PLEASE NOTE DATE CHANGE

FRIDAY 25th November

From 6:30pm at the Delegate Pub

Please come and support our little preschool by dressing in a 'D' themed costume and joining in the fun of our Dutch Auction, delectable dips, drinks, darts comp, and too many more 'D' delights to mention.

DONATIONS OF D THEMED ITEMS WOULD BE GREATLY APPRECIATED FOR OUR 'D HAMPER' PRIZE.

Items can be left at Preschool on Tuesdays and Wednesdays.

Enrolments Welcome for 2017

We are now accepting enrolments for 2017. Please pop into the preschool to pick up an enrolment pack. Children from 6 weeks to 6 years are welcome.

Christmas Break

Our last preschool day for 2016 will be Wednesday 14th December. Children are welcome back on Tuesday 17th January 2017.

End of Year Celebration

Please join us to celebrate the end of the year on Wednesday 7th December. More information will follow regarding this event.

Fundraising

There is still enough time for you to order from the Parent Direct and Chalk toy and gift catalogues. You can pick a catalogue up from preschool or at Uland's cafe. 20 cents of every dollar you spend will be donated back to our preschool.

DELEGATE PONY CLUB NEWS

14 riders enjoyed a glorious sunny day in Delegate for their October Rally.

Split into 2 groups for the day

Juniors –

- Games practising mounted games in teams, negotiating obstacles, navigating around obstacles whilst holding objects, obtaining objects off witches hats low to the ground whilst on horse, transferring objects between containers, mounting & dismounting holding objects
- Correct way for Mounting and dismounting mounts
- Horse care
 - brushes [which one for what purpose]
 - correct techniques of picking horses feet up
 - ways to stretch and warm up a horse prior to riding
- Jumping focussing on body position and control [The juniors done really well at mastering body position going over jumps]



Seniors–

- Flat work focussing on transitions, body position and horse movement
- Jumping, focussing on body position, control, direction and learning jumping etiquette
- Games practising mounted games in teams

To finish up a great day the juniors and seniors joined force, forming 2 teams they competed in mounted games. Thankyou once again to Rowena Butterworth for Instructing for the day. The next rally is [on 6th November](#) leading onto Delegate Gymkhana [27th November 2016](#). Once again I would like to say that Everyone is welcome to attend rally days even if you would like to just see what Pony Club is about. If you would like any further information on Pony Club please contact a local pony club member, attend a rally day or join us on Facebook at Delegate Pony Club.



HERE & THERE

Many Happy Returns to all who were born in November, including Norman Talbot, Terry O'Hagan, Jessi and Jack Reed,, John Callaway, Allan Cotterill, Ky Cuschieri and Ron Collins



Also special birthday wishes to Gloria Cotterill who celebrated a milestone birthday with family and friends at a luncheon in Cooma on Sunday 23rd October.



Richard Swain is a River Guide who runs Alpine River Adventures and passes through Delegate on a regular basis with his group of adventurers heading for the Snowy River. He mostly calls in at the Gallery and this time members of his group were from the National Geographic magazine, so no doubt there will be some images in a future magazine. The website for Alpine River Adventures can be accessed at www.RiverGuide.com.au.

It was nice to see so many of the Crotty family getting together at the Country Club on the Trivia night. Bernie and Joyce came for the week-end with their three sons and a number of grandchildren. Scrub was there with three members of his family and grandchildren so it was almost a family re-union.

On a visit out Corrowong way with the Tuesday Club we spotted a white emu in a paddock, not at all worried when we stopped to take a photo. His once white feathers were quite dirty as you can see below:



Many local families have had their NBN connected. Have heard varying reports regarding the speed.



Despite misgivings about the readiness of the course the annual Golf Tournament was held on the week-end of the 15th and 16th of October. The weather was good on both days and there were very good entries for the ladies' competition on Saturday. The course is certainly looking spectacular at the moment.



Another round of submissions to Council re Streetscapes for both Delegate and Bombala. We can only hope that the final result will fulfil expectations.

**ANGLICAN PARISH
GARDEN DAY**

Saturday 3rd December 2016
Commencing at 10:00 am with Morning Tea
At
**Di & Matt Green's
property "Greenshill"**

Located 3.4 km from Bombala PO on Cann Valley HWY
Follow signs from Wedmore Rd

All gardens open till 4:00 pm
Lunch between 12:30 and 2:30



Markets
Stalls

Raffle on
the day

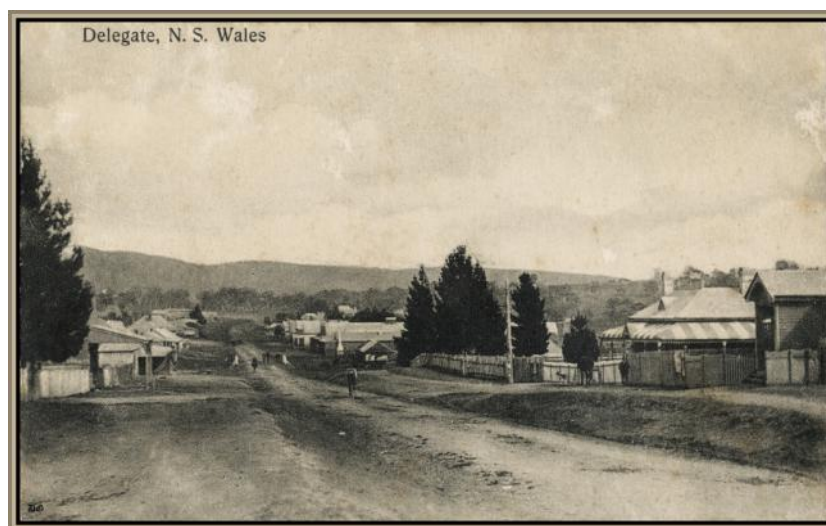
COST \$20 PP
ENTRY INCLUDES 5 GARDENS, MORNING TEA AND LUNCH

LOOKING BACK



The old photo above courtesy of David Goodyer shows the crowd at an early Delegate Show. The local show is probably the oldest continuing local event as many other institutions such as the annual Races and Deb Balls are a thing of the past.

Below: Another from David Goodyer's photo collection. It is probably from 100 years ago, and shows that not a great deal has changed. There are certainly some historic buildings in the main Street



Watson's Hotel shown in last months paper was on the corner of Victoria Pde and Corrowong Rd where Talbots sheds are. Families came into town to do their shopping in horse and sulky. They would stay the night at Watson's Hotel for an early start home the next morning to return to Tingringi, Wallendibby, Tubbut or Bonang.

Community Information

EMERGENCY / AMBULANCE: 000

FIRE: 000

POLICE

Delegate: 6458 8044

Bombala : 64583444

Cooma: 6452 0099

Bendoc: 6458 1523

HOSPITAL: 6459 8000

DOCTOR: 64951369

CHURCHES

Catholic: Father Mick McAndrew 64522062

Sister Teresa Keane: 6458 3045

Services: Delegate Saturday 6:00pm

Liturgy of the word and Holy Communion

Bombala Sunday 9:00am

Liturgy of the word and Holy Communion

Anglican: Rev. Robert Lindeck 6241557 Mob.

0408531544

Rev Judy Holdsworth—64583513

Services: 11am every Sunday..

COMMUNITY HEALTH (3 days per week)

Generalist Community Nurse –Monday, Thursday, Friday

Wellness Clinic—Monday , Tuesday, Thursday and Friday 1pm to 2pm

Pathology—Wednesdays 0930-1-3- hours

Immunisation Clinic—Fourth Thursday from 1100hours.

Podiatry Clinic

Victorian Visits Tuesdays

Call MPS 64598000

Healthdirect and GP helpline 1800022222

MONARO FAMILY SUPPORT SERVICE

Bombala Office: 6458 4888

open Tues to Thurs - 9:00am to 5:00pm

COUNCIL CHAMBERS: 6458 3555

DELEGATE PRE-SCHOOL: 6458 8196

DELEGATE PUBLIC SCHOOL: 6458 8183

DELEGATE PROGRESS ASSOCIATION

RTCT Centre - 6458 8388— dpaoffice@bigpond.com

Newspaper: delegateprogress@exemail.com.au

NRMA/RACV: Jack Stewart: 64588047

TUBBUT ACCESS CENTRE: 6458 0295

DELEGATE CARAVAN PARK: 64584047

Delegate Progress Association Inc.

66A Bombala Street

DELEGATE NSW 2633

PH 6458 8388 Fax 64588 374

E-mail dpaoffice@bigpond.com

delegateprogress@exemail.com.au

(for paper)

‘Delegate Doings’ Subscription:

\$38.60 by Post

Email \$16.50.

Cash or Cheque payable to
The Delegate Progress Association Inc

Amount \$ _____

Name

Address or email:

The Delegate Doings is published by the Delegate Progress Association. We welcome information about meetings and reports on functions and other activities of local people and organisations, factual historical articles and poetry etc. We do not publish letters to the editor. The publisher accepts no responsibility for any advertisement, or articles. Any advertisement or article is published at the risk of the contributor, who accepts liability for any intended publication. All such contributors agree to indemnify the publisher and warrant that the material is accurate and is neither deceptive or misleading, in breach of copyright, defamatory, or in breach of any other laws and regulations.

ADVERTISING IN THE “DELEGATE DOINGS”

| Spot Ad: | 1 | 6 | 11 |
|----------------------------|----------------|-----------------|-----------------|
| \$5 cash—\$7.50 a/c | Issue | Issues | Issues |
| 1/4 Page | \$17.50 | \$87.50 | \$157.50 |
| 1/2 Page | \$35.00 | \$175.00 | \$315.00 |
| Full Page | \$70.00 | \$350.00 | \$630.00 |
| Back Page | \$80.00 | | |
| Full Page Insert | \$90.00 | | |

Colour advertising: prices on application

Weeds and Weeding

When developing control methods for the weeds in your garden you need to first have a good understanding of the target plant's life cycle. To classify weed plants first think of them as either annuals or perennials then as either winter or summer problems which determines when suppression activities need to be programmed. More importantly weeds are most usefully divided into the two main groups - those that **produce by seed** e.g. flick weed (*Cardamine hirsute* L.) and those that **spread vegetatively** through runners e.g. couch grass (*Cynodon dactylon*) and those that **do both** e.g. sorrel (*Rumex angiocarpus*).

SEED PRODUCERS The strategies for seed producers is to

(1) **prevent** them from seeding- this is the primary control. However, when there is already seed in the soil from previous years the second line of attack is to

(2) **suppress** germination of this seed by light exclusion. This can be achieved either through competition from desirable garden plants (ground covers) or by applying a surface mulch of some sort. In the past black plastic was laid but this overheats the soil, prevents air and water entry killing the soil organisms and eventually creating a sour non-functioning soil. More recently fabrics with porosity have become available that overcomes this effect but weeds still grow in the organic matter that collects on top and this can be a surprisingly small amount. More recently there has been an emphasis on organic mulch such as straw or bark chips that break down and improve the soil by raising soil carbon levels. Remember that soil carbon helps soil structure and feeds the important soil flora and fauna that maintain soil health. The next strategy is

(3) **minimise soil disturbance** when physically removing weeds Turning soil over brings seed to the surface allowing germination giving a raft of new plants to deal with.

RUNNER plants Much as it pains me to say it are best attacked with herbicide because digging them out massively disturbs the soil allowing germination of a host of replacement species and anyway rarely removes all those little pieces of runner that quickly regrow from dormant buds starting the whole process over again. So (1) is **use herbicide BUT thoughtfully** and (2) **avoid creating bare patches**. Now when herbicide is used as a blanket spray large areas of bare soil are created that are ripe for weed invasion. It also often leaks into the soil around desirable plants causing garden havoc – roses especially only have to sniff herbicide to deteriorate. The secret is that you do not need the strength or the saturation recommended on the label. If you spray make a weaker solution – the weeds take longer to die - but there is a greater margin of error for the good plants. The best and safest method of all is to use the paintbrush method. A spot of neat herbicide on the tip over the runner will travel back along the stem killing the whole plant right up to the base of say the precious rose. A spot in the centre of a thistle, dandelion or big leafed plant like dock has the same effect.



EXAMPLE Flick Weed. It commences its growth in Spring and it is important to know that germination through to seed production can occur in as little as 10 days. Therefore key to its control is **frequency of effort** especially since flick weed pods open explosively with touch throwing seed up to 3 metres. Flick weed forms a ground hugging rosette indicative of plants that rapidly colonise bare ground. Weeded plants and their developing seed need to be destroyed by heat and the simplest method is to allow them to rot in a plastic bag left in the sun. By the way it is edible in salad closely related to cress (but it is not a good taste).

Example (2) Sheep sorrel (*Rumex angiocarpus*). It has annual seed producing tops and a perennial, rhizomatous root system. It tolerates drought, sour soil, compaction, frost and snow but has the weakness of being intolerant of shading. If you can cover it deeply with mulch it will weaken but any foliage that emerges will feed the plant and get it started again so a combination of techniques is needed. First mulch and then if any leaves make it through touch with a child's paintbrush dipped in neat herbicide. This is a strategy for couch and kikuyu too. Sorrel is edible also being a close relative of culinary sorrel used in salad and sauces. So is couch.



It was eaten by people during the potato famine in Ireland giving a green stain around the mouth and rise to the National colour associated with that country later transferred to the more politically acceptable Shamrock.

The take home message for weed control is minimise seed production, minimise soil turnover and minimise bare soil patches and maximise ground covers.

In other words **CONSTANT GARDENING**.