

October 2018

**1.50 incl.
GST**

Delegate Doings



ISSN 1446-6716

Volume 17, issue 10.

Closing of the little Craigie Church.

Sunday 23rd September was a sad day for residents past and present, of the little village of Craigie.

Almost 100 people gathered for the final service in the little St Stephen's church. The church has been deconsecrated prior to being offered for sale by the Anglican Parish Council. The service was conducted by the Reverend Brian Roberts assisted by Rev. Judy Holdsworth. He outlined the history of the little church which was built originally at Ila but then moved to its present site where it served the local community for many generations. Many Craigie families were represented at the service, familiar names such as Groves, Hite, Robinson, Roberts, Campbell, Lock, Walcott and many more who had travelled long distances to attend.

During the service Leanda and Gaylene (Milliner) sang their well known song "The little Craigie Church" and Molly Davies played the old Pedal Organ.

After a photo opportunity outside the church, the congregation moved to the Craigie Hall for a sumptuous lunch, where they made the most of an opportunity to catch up with long lost friends.



Next Issue: November 2nd

then: Dec 14th

and: Feb 1st 2019

Inside this issue:

Health Meeting	3
Hospital Aux Lunch	4
Bundian Way Exhibition	8
Gardening News	10
Sunday Sips	12
Here & There	13
Looking Back	14

Dates for your Calendar

- 6th and 7th October—Delegate Country Club Annual Tournament
- 10th Oct Heritage weekend meeting
- 13th Oct Darts Doubles
- 20th Oct Bombala races
- 9th Oct Dpa meeting
- 13th/14th Oct Team Penning / Team Sorting
- 27/28th Oct Celebrating our History weekend
- 27th Oct Delegate –Bombala Darts Day
- 24th Nov Bombala Market Day.

Celebrating our heritage October 27th & 28th.

Saturday: Fun and games at Bill Jeffreys Park, novelty races, Tug of War, Snowy River Sprint, Market Stalls, Barbecue lunch.

Saturday afternoon—Tea and Damper at the Settlers Hut, Music, poetry reading and later Wine and Nibbles. In the evening the Country Club is the place to be with dinner and Live music.



Sunday: 10.15 at Delegate Cemetery for a service celebrating the first place of worship on Monaro and the end of WW1. A march into town for those who wish to do so, to the Cenotaph for the unveiling of the plaque marking the spot where the Men from Snowy River march commenced, by the Hon. Mike Kelly, Federal Member for Eden Monaro. Another plaque in front of the school of Arts to be unveiled, followed by the opening of the new Plaza by the Hon. John Barilaro, State Member for Monaro.



Our health is worth fighting for

On Friday September 21st, the Bombala-Delegate branch of the NSWNMA (New South Wales Nurses & Midwives Association) invited members of the public to a meeting in Bombala to highlight the continued deterioration of services in our Southern Monaro/East Gippsland region.

Staff shortages and recruitment problems

There was a focus on Delegate as its need is urgent. Without a doctor, its MPS cannot function as intended: a hospital with an Emergency Department, serviced by a doctor and a full nursing staff.

The last resident doctor left in 2007. Since then, a south coast doctor with a plane has provided a monthly service in the town and people in the cross border region attend chosen or available surgeries in regional towns, never closer than two hours drive.

Increasingly, Bombala has also felt the impact of the rural doctor famine leading to increased reliance on locums on short term contracts.

The nurses told their stories. Some of them have worked at local hospitals for years, observing the changes to healthcare delivery over the decades.

How our communities are affected:

- Acute care is often unavailable — so patients must travel to Cooma (or Bega) and sometimes further;
- When no on-call doctor in Bombala, acute care patients are transported to Cooma on weekends leaving beds in the local facilities empty and ambulances moving patients between hospitals are unavailable in emergencies
- Nurses holding the fort without a doctor are placed under additional stress
- Nursing vacancies remain unfilled due to lack of quality applicants and cumbersome recruitment process at state level
- We are not classified as ‘remote’ so incentives do not apply

Remote hospitals need the right equipment

The growth of telehealth provides some comfort to nurses. While not replacing face-to-face health services, internet meetings allow collaboration between medical professionals and consultation from a distance. Of real benefit is the ability it gives doctors to supervise nurses when they cannot attend. Bombala is able to communicate with doctors around the country but currently Delegate is only able to communicate with Cooma.

To perform ‘best practice’ medicine, the nurses’ have an equipment wish-list.

- **iStat** hand held monitor which would enable blood analyses on site within minutes <https://www.pointofcare.abbott/int/en/offers/istat/istat-handheld>
- **CoaguChek** monitor - a hand-held device used to measure the international normalised ratio (INR) in individuals taking warfarin. The INR is a laboratory measurement used to determine the effects of oral anticoagulants (warfarin) on the clotting system
- **Bladder scanner** – used to assess post-operative patients to avoid infection

Nurses need access to training

While new useful equipment is welcomed, training in its use should be part of the delivery service. Ensuring there are experts on site enables new staff to be trained in the equipment’s use.

It was noted that staff in hospitals all over the region do not all know how to operate the conferencing software.

Nurses are obliged to keep abreast of new developments and undertake professional training, but this isn’t so easy from a distance. Clinical upgrades require practice as well as theory classes and our local nursing staff needs support to undertake training and opportunities to practise their skills. They also need replacements for times they are absent.

State election – an opportunity to lobby

With health a number one concern for most people, the ANF representative asked people to sign their petition to get major parties to commit to a stronger focus on rural and remote health, particularly in the Monaro electorate where 1000 votes would make the difference. No doubt health consumers can think of other ways they can persuade politicians and other decision-makers to respond to the needs of rural and remote communities like ours.

Petitions are located at Delegate General Store, Delegate Café and Delegate RTC

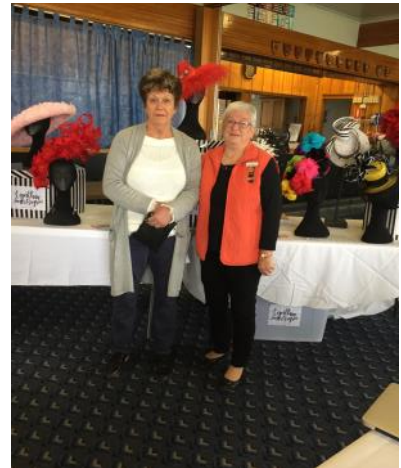
HOSPITAL AUXILIARY HOLD SUCCESSFUL LUNCHEON

The hard working Committee of the Delegate Hospital Auxiliary will no doubt be pleased with the attendance at the annual luncheon at the Delegate Country Club on Wednesday 26th September. . Apart from the usual delicious food, a special attraction this year was the Guest Speaker, Cynthia Bryson Jones and her array of fantastic and colourful hats.

Cynthia spoke of her journey which began as a passion for dressing dolls when she was a little girl, on to learning the trade in London when her husband had been posted there. Her association over several years with former Governor Quentin Bryce for whom she made many creations led to winning prizes in millinery shows including the Melbourne Cup. Cynthia is now a well known designer who has made her name in the world of millinery.

Auxiliary president Clare Strickland presented two long service medals to Janice Lewis and Philomena Collins. *L: Cynthia and mother Joan model two of the hats. Centre: Janice receives her medal.*

R: Philomena with president Clare.



SANDRA WALKER CELEBRATES A BIRTHDAY



Members of the Exercise Class joined with Sandra at the Delegate Café for coffee and cake to celebrate Sandra's birthday.

This is a special ritual carried out by the group for each one's birthday. Now and again they visit each others homes for lunch, other times go to the Café. There is always a birthday cake and candles to blow out.

Pictured are Sandra, about to cut her cake and Alma Red.

Delegate Café

64 Bombala St Delegate

DINE IN - TAKE AWAY

OPEN 7 DAYS

Fruit & Veg - Groceries

DVD Hire - Eftpos

Tel (02) 6458 8171

Pizza available most Friday & Saturday Nights

ELGAS Distributor

Pickup Only (Sorry no Delivery)

DELEGATE HOTEL

Your host: Paul Herringe

**Accommodation
Counter Lunches**

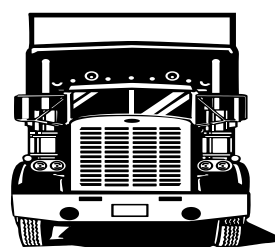
13th October Delegate Darts Doubles

27th Oct Delegate—Bombala Darts Day

**Sky Channel & Pub Tab,
ATM and Eftpos**

Ph: 6458 8091

TALBOT TRANSPORT



LIVESTOCK & GENERAL

1 Hensleigh Street, DELEGATE 2633

Mobile: 0418 516 076

Phone: (02) 6458 8085

Fax: (02) 6458 8055

LANDMARK

an AWB company

Delegate

Tel: 6458 8004

Livestock— Tony Brady,

Sam Platts

Agronomy— Kathryn

Bullas

0409032019

Merchandise

Fertilisers

Delegate Hair Boutique



Open
All Day Fridays
Delegate School
of Arts
Call in on the day
or telephone
0427587240
For an appointment

**PLUS For all
Your Floral
Arrangements**

weddings,
Birthdays,
Anniversaries,
Wreaths and
Private
Functions

Phone Pam

on 6458 4346

Mob: 0427587240



BIRTH ANNOUNCEMENT

It's with great excitement that Clay and Patrice Clear of 'Woodburn' Mila announce the safe arrival of their beautiful twin daughters on 14th September. Josie Michelle was first at 8.50pm, 2745g and 50cm followed by Maisie Jane at 9.22pm, 3140g and 51cm. The twins are little sisters for Bridget and granddaughters of Garry and Michelle Ingram 'Karinya' Delegate and the late Paul and Angela Clear. Josie and Maisie are great granddaughters of Lorna Trevanion of Bombala.



LETTER TO COUNCIL

Jeremy Clare has recently forwarded a letter to Council asking why he and the rest of the town are being charged Storm Water Management Rates.

He went on to state that due to past issues, stormwater runs unchecked past his property and he has on-going costs for cartage of gravel to fill in the water erosion. The same problem is experienced by his neighbor. And many others in town.

His bottom line is that if Council are going to charge for Storm Water Management, would they please provide the service. He illustrates his point by attaching several photographs. We wait to hear their reply.



BUNDIAN WAY GALLERY PORTRAIT EXHIBITION OPENING.

Those who attended the Bundian Way Gallery official opening of the fantastic portrait exhibition by Towamba Artist, Vicki McCredie met with the artist and one of the locals whose portrait is in the exhibition, Doug Thompson. The exhibition was opened by former Mayor of Bombala Shire, Bob Stewart, who attended with his wife Ann. The Artist Vicki, spoke of the pleasure she had meeting with the indigenous community and putting together the exhibition which was three years in the making. She is a bubbly and friendly person, with enthusiasm to burn. She said she had only learned of the Bundian Way project, when John Blay accompanied by two other men called at her home in Towamba and told her the story of the ancient pathway.

Following the official opening, President of the Delegate Progress Association, Robin Guthrie invited the guests to the Borderline Gallery, where a new artist has her work on show. Julie Herringe, who with husband Paul recently became the new owners of the Delegate Hotel, is very enthusiastic about her craft and we hope to see a lot more of her work. The Borderline Gallery also has other new work on display, and visitors were able to look over the extensive art and craft on display before enjoying the wine and nibbles provided by members of the Delegate Progress Association. There are also prints of the portraits and books for sale.

Below: Doug Thompson beside his portrait. Middle Chelsy Atkins "Rainbow Woman", R: Bob Stewart alongside portrait of Briame Marellan and her children Aslyan and Tatania. Each subject has their story under the painting.



UNCOVERING HISTORY

Georgia Reed, second daughter of Cathy and David has just returned from three weeks in Germany, doing her second archaeological dig, with other students from the Australian National University, where Georgie has almost completed her third year of studies. The dig site is in Northern Germany, near a small village and manor house, Hanover being the nearest large town. This year in the trench where Georgia was working a human skeleton was found, apparently quite old, but as she was leaving the next day, unfortunately Georgia was not able to be there for the removal and dating of the bones. The site is used by students from all over the world and articles dating back to the 12th Century are found..

On their days off students take the opportunity to visit neighbouring villages and below, Georgia (R) and friend Chloe are pictured in one of these villages. On the right is an article which she recovered this year.



Delegate Multi Purpose Service

Wellness Clinic is held at the MPS, in Craigie Street Delegate. People come to the clinic for procedures and assessment by nursing staff.

The clinic is open

Mon, Tue, Thur, Fri 1pm to 2pm

Every week except public holidays.

No Appointments necessary.

A variety of procedures are available.

- Wound care
- Blood pressure readings
- Blood sugar readings
- Non-urgent ECG's
- Suture or clip removal
- Injections – with Dr's written order
- Other procedures that do not require a Dr.

Pathology clinic

Wednesday 9.30am – 10.30 am. No appointment necessary. Closed public holidays.

Other Services

Women's Health Nurse

3rd Wed of the month

Dietician and Diabetes Educator

2nd Thur of the month

Immunisations – 4th Fri of the month

Podiatry – for HACC clients – monthly

Ring the MPS for appointments for the dietician, diabetes, immunisation, podiatry and women's health 6459 8000

Child and Family Health – visits Delegate MPS on a regular basis ring Kirsty on 6458 5777 for an appointment.

SNAKES ARE ABROAD

Courtesy of Rachel Butterworth of DWELP who forwarded us a media release, we show photos of different snakes which live in our area. She warns that the warmer weather has brought the snakes out of hibernation. The snakes pictured are highly venomous, so watch where you are stepping. Photos on back page.

The Delegate River Tavern

Is now open for business under new owners Megan and Michael Downey. They have two of the cabins ready for occupation and are working on two more.

As accommodation is a premium, it is good to know that this popular venue will be available.

Megan's phone no.

0428880476

GARDEN PLANNING

Although the rain of the last few days has given a lift to gardener's spirits it is hard to be confident as yet about the Summer seasonal conditions to come. To cope with dry times, and possible water restrictions, the most useful action is to use a mulch. Conserve every little bit of organic matter available in the garden, leaves, prunings and clippings to spread around. This can be boosted by composting household waste and carbon rich material such as paper and cardboard. Mulch not only physically protects the soil but, as it breaks down, provides plant nutrients.

However, its real worth is the promotion of soil microbial activity, the absolute basis of soil health. The by-product of this microbial activity and mulch breakdown is soil carbon or humus. Humus is the ingredient that exponentially increases soil water holding capacity which stabilises water conditions for the plants.

Roots constantly search soil crevices (pores) for water by protruding microscopic hairs from the root tips. These do not survive well the cycle of brief wetting and longer drying that we habitually inflict on the garden nor do they survive periods of saturation. Their death causes the plant to expend energy in producing new ones. At best this depresses growth and at worst allows entry of pathogens, fungi if dry and bacteria if too wet.

Once the soil is in good condition the next item on the agenda is plant choice. Choose only those plants that like the climate you have. Next, group plants that have similar needs. It is no point placing a lime loving plant in a bed of acid loving plants nor is it going to be successful to mix a plant with high water needs with one that likes it on the dry side.

This is where the general gardener finds the complications and asks, 'How do I know?'

Looking at where the species naturally grows and understanding the region gives the best clues. Plants from around the Mediterranean generally need limey conditions because the soil there is derived from limestone. Plants from high rainfall areas generally respond to acid conditions because these soils are constantly leached. Plants from steep mountains have generally adapted to shallow drier soils and those from valleys and stream sides enjoy deep constantly moist soil.

The next clue comes from the plants themselves. Big shiny leaves shed water indicating a rainy environment, plants with small or few leaves, hairy leaves and grey light reflecting colour indicate an adaptation to water conservation. You can be sure that the first group will resent drying out and the second resent overwatering.



This plant has hairs to trap moisture in the layer around it to reduce evaporation. Such a plant does not take kindly to having its foliage wetted during watering. Lavender is also in this group so water the soil around them not the plant.



Some plants have shiny leaves and pronounced leaf tips to help them shed water, think camellias. They enjoy a cleansing hosing, but not in the heat of the day because big leaves are prone to sunscald.



Gardens of Scotland

While in Scotland Russell and Sharon Buckman visited a number of beautiful gardens. Some of them are National Trust or Heritage Scotland gardens and others are private gardens open to the public. It is amazing what you can do with unlimited space, money and time. Many of these gardens are hundreds of years old.

Drummond Castle Gardens is one of Europe's and Scotland's most important and impressive formal gardens. Located in Perthshire near Crieff, it dates back to the 17th Century. The gardens were redesigned and terraced in the 19th Century. The formal gardens that you see today were replanted in the 1950s but preserve many of the original features, the ancient yew hedges and the remaining beech tree planted by Queen Victoria, commemorating her visit in 1842. (large purple tree in back right of garden.)



Brilliant design and meticulous maintenance give Pitmedden Garden its unique charm. With almost 6 miles of clipped box hedging, the parterres at the heart of the garden are a masterpiece of intricate patterns and sparkling colours.



The Great Garden dates back to 1675 when it was originally laid out by Sir Alexander Seton. In the 1950s the National Trust re-created

the garden based on 17th-century plans of the gardens at the Palace of Holyroodhouse in Edinburgh.

Blair Athol Castles's Hercules Garden is a nine acre walled garden that has been restored to its original Georgian design. Named after the life-sized statue of Hercules which overlooks the garden, it incorporates landscaped ponds, a folly, a Chinese bridge and an authentic orchard of more than 100 fruit trees. The glory of this garden in summer are the herbaceous borders which run along the 275m south-facing wall.



Studley Royal Water Garden

The water garden at Studley Royal created by John Aislaby in 1718 is one of the best surviving examples of a Georgian water garden in England. It was expanded by his son, William who purchased the adjacent Fountains Estate. The garden's elegant ornamental lakes, canals, temples and cascades provide a succession of dramatic eye-catching vistas. It is also studded with a number of follies including a neo-Gothic castle

and a palladian style banqueting house.

SUNDAY SIPS CLOSES THEIR ACCOUNT

A local group who have raised and distributed money throughout the district have closed their account, with one of the signatories Graeme Payten having left the district and the other signatory Robin Mikula, making the decision to distribute the money left in the account. The Delegate Progress Association were the grateful recipients of a cheque for \$3100.00, which was presented by Robin, Bec Kading and Jeremy Clear on Wednesday the 3rd October. Robin Guthrie President of the DPA thanked them for their generous donation and assured them it would be put to good use. One suggestion was to plant more trees at the Delegate Cemetery, but it was agreed that the first step if this was to be a successful enterprise would be to provide water for a drip line. Suggestions were made of installing a tank somewhere in the cemetery or pumping from the creek, but this is something which needs to be thought through before any trees are planted.

The new owners of the Hotel Julie and Paul Herringe are happy to carry on with Sunday Sips, but it may be in a slightly different format. All the members of the previous committee will be part of the new group.



Above: Sharon Buckman, Pennelopy Judge, Bec Kading, Jeremy Clear, Robin Mikula, Robin Guthrie, Natalie Armstrong and Gloria Cotterill. Not present Graeme Payton.

CORROWONG WALLENDIBBY LANDCARE FIELD DAY

Corrowong Wallendibby Landcare **Riparian and Aquatic Weeds field day on Thursday 1st November** (10 am to 3pm) at Delegate School of Arts and Bill Jeffreys park. (Lunch will be provided)

The field day will cover:

An Integrated Approach to Riparian and Aquatic Weed Management (Justin Hurley Lee - Ecologist Global Land Repair)

Using drones for weed spotting (Rob Matthews - Helisurveys Airborne Earthcare)

Please **RSVP by 25 October by email** to raandtmcleish@gmail.com



HERE & THERE

Birthday greetings to all those bon in October, including Shannen Talbot, Daniel Talbot, Doreen Standen, Uland Sievert, Annette Twomey, Val Crawford, Gloria Cotterill, Peter Guthrie, Trina Manning. Also Jackie Reed, Kerry Cuschieri, Megan Downey. Who celebrate a milestone birthday this year.



Double congratulations to Patrice and Clay Clear, on the arrival of twin daughters, who are to be named Josie and Maisie. Big sister Brigid is delighted with the new arrivals. The twins make seven grandchildren for Michele and Garry Ingram, and exciting additions to the family for great grandmother Lorna Trevanion.

Also a new arrival for Daniel Talbot and Ashleigh Maher, a son Coby Jack. A new grandchild for Terry and Michelle and Philomena and Norman.

Congratulations to all proud parents and grandparents.

Work has commenced on the new plaza in front of the School of Arts. The larger plantings of trees will not be done in time for the October Celebrating our Heritage week-end, but everything else should be in place to allow the unveiling of a plaque featuring a photo and story of the Men from Snowy River. There will also be a similar plaque marking the spot where the march com-

menced near where the Cenotaph now stands.

The banners have been ordered for this week-end and will feature photos from the past in both black and white and colour.

Bunting has also been ordered, so the town should be well decked out for the occasion



We met with a representative of the Snowy Monaro Regional Council at Bill Jeffreys Park and were pleased to hear that the new Camp kitchen will be completed by Christmas. John Blay's canoe sculpture will also be installed before the Heritage week-end in October.

The Progress Association recently had a phone hook-up with TRC who through the Office of Regional Development are planning the tourism strategy for this area. We emphasised the fact that the former Bombala Shire has a completely different demographic to the Snowy Mountains area. There were five of our members present, including Karen Cash and it was pointed out that tourism for our region needs to emphasise the Bundian Way, Delegate's Heritage attractions, and the North East Gippsland border area. It was agreed that representatives of TRC should visit the area and meet with us in the near future.

Sharon and Russel Buckman have returned from their sojourn in Scotland and Northern England and have of course brought back lots of photos. Some of their collection are shown on page 11

What a strange weather pattern we have been experiencing. The long dry brought fires all around us on what was one of the wildest windy day ever experienced here. Then we woke next morning to find snow on the ground.

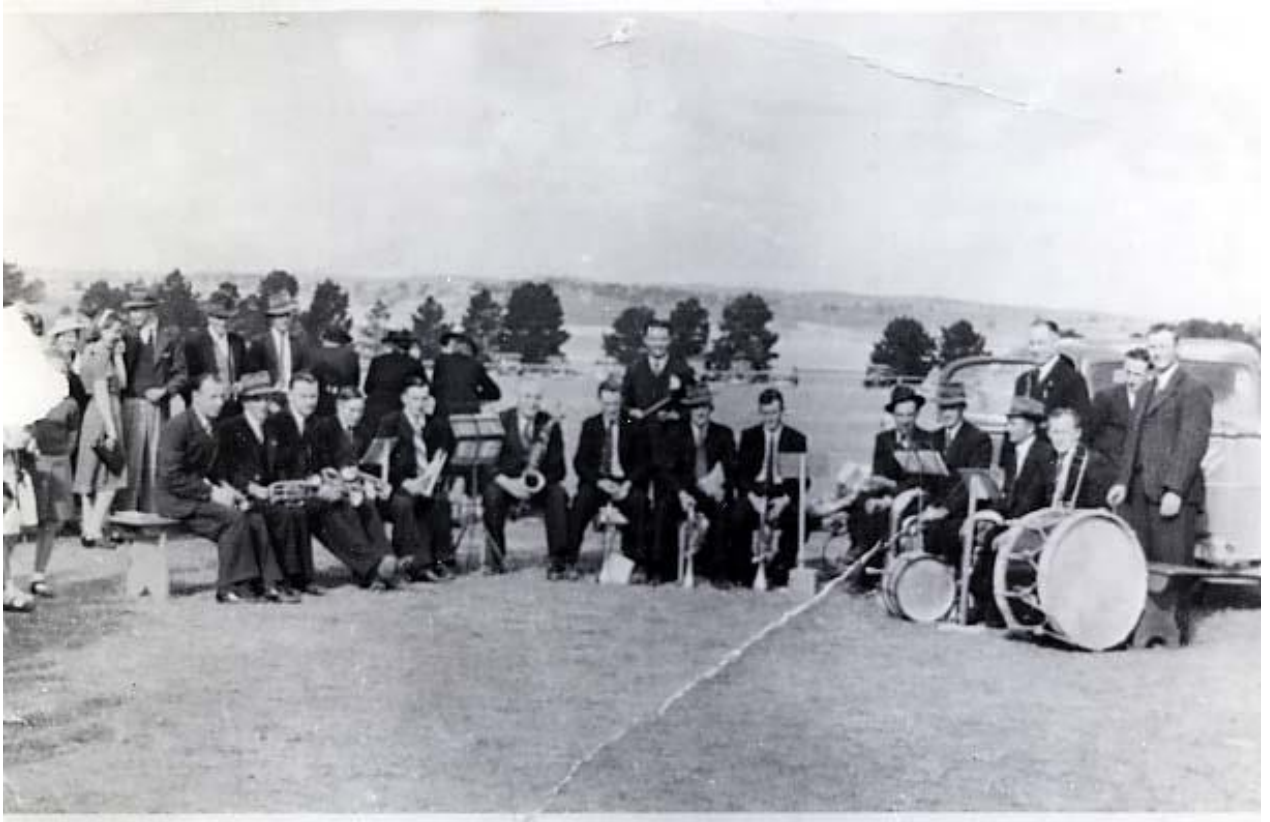
It is Spring Racing time again, and the next item on the Agenda is the Bombala Races, on Caulfield Cup Day the 13th of October. With improvements to facilities and fashions in the field and other attractions it has become a very popular event attracting a big crowd.



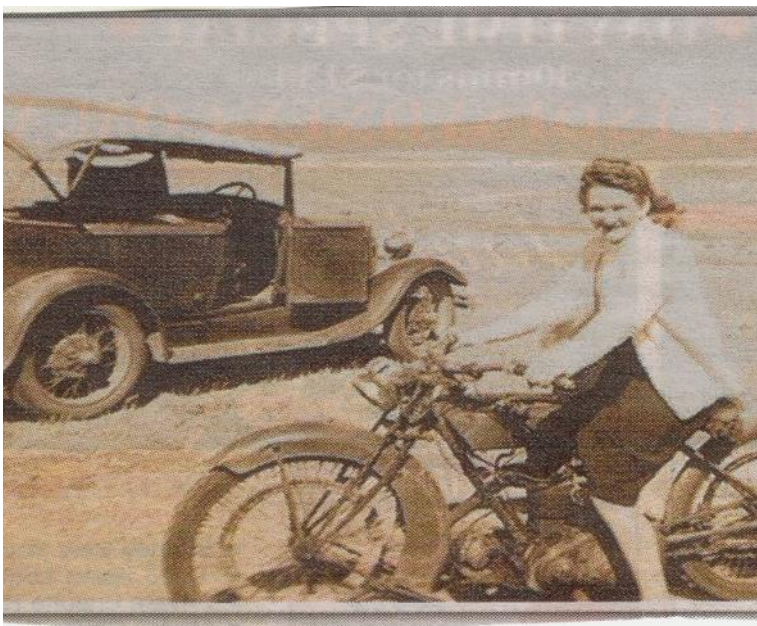
Preparations are in hand for the annual Delegate Golf Tournament this weekend. The course looks to be in great condition and the rain we experiencing at present should only improve things.



LOOKING BACK



The above photo is of the Delegate Town Band. It is hard to believe that so many people at that time could play a musical instrument. The photo was taken at the Delegate Show Ground.



This photo recently in the Sunday Telegraph with the captain.

“Alice O’Hare on a motor bike while on honeymoon on her husband’s family sheep farm on the Monaro tablelands.”

The O’Hare families lived at Corrowong on various properties, but there are different families on these properties now.

Community Information

EMERGENCY / AMBULANCE: 000

FIRE: 000

POLICE

Delegate: 6458 8044

Bombala : 64583444

Cooma: 6452 0099

Bendoc: 6458 1523

HOSPITAL: 6459 8000

DOCTOR: 64951369

CHURCHES

Catholic: Father Mick McAndrew 64522062

Sister Teresa Keane: 6458 3045

Services: Delegate Saturday 6:00pm

Liturgy of the word and Holy Communion

Bombala Sunday 9:00am

Liturgy of the word and Holy Communion

Anglican: Rev. Robert Lindeck 6241557 Mob.

0408531544

Rev Judy Holdsworth—64583513

Services: 11am every Sunday..

COMMUNITY HEALTH (3 days per week)

Generalist Community Nurse –Monday, Thursday, Friday

Wellness Clinic—Monday , Tuesday, Thursday and Friday 1pm to 2pm

Pathology—Wednesdays 0930-1-3- hours

Immunisation Clinic—Fourth Thursday from 1100hours.

Podiatry Clinic

Victorian Visits Tuesdays

Call MPS 64598000

Healthdirect and GP helpline 1800022222

MONARO FAMILY SUPPORT SERVICE

Bombala Office: 6458 4888

open Tues to Thurs - 9:00am to 5:00pm

COUNCIL CHAMBERS: 6458 3555

DELEGATE PRE-SCHOOL: 6458 8196

DELEGATE PUBLIC SCHOOL: 6458 8183

DELEGATE PROGRESS ASSOCIATION

RTCT Centre - 6458 8388— dpaoffice@bigpond.com

Newspaper: delegateprogress@exemail.com.au

NRMA/RACV: Jack Stewart: 64588047

TUBBUT ACCESS CENTRE: 6458 0295

DELEGATE CARAVAN PARK: 64584047

Delegate Progress Association Inc.

66A Bombala Street

DELEGATE NSW 2633

PH 6458 8388 Fax 64588 374

E-mail dpaoffice@bigpond.com

delegateprogress@exemail.com.au

(for paper)

‘Delegate Doings’ Subscription:

\$38.60 by Post

Email \$16.50.

Cash or Cheque payable to

The Delegate Progress Association Inc

Amount \$ _____

Name

Address or email:

The Delegate Doings is published by the Delegate Progress Association. We welcome information about meetings and reports on functions and other activities of local people and organisations, factual historical articles and poetry etc. We do not publish letters to the editor. The publisher accepts no responsibility for any advertisement, or articles. Any advertisement or article is published at the risk of the contributor, who accepts liability for any intended publication. All such contributors agree to indemnify the publisher and warrant that the material is accurate and is neither deceptive or misleading, in breach of copyright, defamatory, or in breach of any other laws and regulations.

ADVERTISING IN THE “DELEGATE DOINGS”

Spot Ad:	1	6	11
\$5 cash—\$7.50 a/c	Issue	Issues	Issues
1/4 Page	\$17.50	\$87.50	\$157.50
1/2 Page	\$35.00	\$175.00	\$315.00
Full Page	\$70.00	\$350.00	\$630.00
Back Page	\$80.00		
Full Page Insert	\$90.00		

Colour advertising: prices on application

PHOTOS



Cynthia Bryson Jones's display of fantastic and colourful hats.

From top to bottom the snakes are Copper-head, Eastern Brown, Red Bellied Black and Tiger.



Below: AT the public meeting re Health in Bombala's Community Centre.

