

September 2021

**1.50 incl.  
GST**

# Delegate Doings



ISSN 1446-6716

**Volume 20, issue 9.**

## **EXCITING ADDITIONS TO DELEGATE SHOWGROUND.**

The Delegate P and A (Show) Society Is really excited to see the finalisation of the construction of a new cattle pavilion, loading ramp and yards and an undercover deck in front of the shed beside the kiosk at the Delegate Sportsground.

The Society applied for funding in December 2019 through the Regional Agricultural Show Development Grant program that was administered by the Federal Department of Agriculture, Water and the Environment. The Society was successful in obtaining a grant in July 2020 for \$87,810.64 and was one of 32 Show Societies in NSW to receive funding through this grant stream.

The construction of this infrastructure will give the Society and all users of the ground modern and safe facilities. The Society is sure that this will lead to an increase in exhibitors for the cattle section, not only in the stud section but commercial as well as the yards have been designed to accommodate the commercial classes exhibited at the Show. Also, some former exhibitors were reluctant to bring their cattle to the show because of the dilapidated loading facilities. The Society is sure that the construction of the new loading ramp will entice these competitors back. It will also be useful for the storage of pony club equipment when not being used to show cattle.

The undercover viewing deck provides a great facility for all users of the ground, particularly the events held in the main ring. It will also provide a wonderful and safer space for the end of day activities run by the Society, Campdraft Committee and Team Penning Committee, to name a few. Now all we need is for community events to go back to “normal” to utilise these wonderful new facilities!

The Society would like to extend its thanks to the Federal Government for the funding and Snowy Monaro Regional Council for its support of the project. Also to Neil Ingram who constructed the new facilities and the Society’s members who erected the new cattle yards and loading ramp.



**Next Issue: 1st Oct**

**then: 5th Nov and: 10th Dec**

### Inside this issue:

Fabulous Shoes	3
Recipes	4
Brian McQuillan	8
Firewood Collection	10
Slugs and Snails	11
Here & There	13
Looking Back	14

### Dates for your Calendar

- 25th September—Old Post Office Markets
- 30th/31st Oct - Heritage Festival
- 30th Oct - School 150 celebrations **CANCELLED**

**Postponed until Feb 2022**

All Events are Covid Rules Dependent and may be cancelled at short notice.



Hardware Repairs / Software Repairs  
Networking  
Computer Upgrades  
Virus Removal

Assistance with all computer problems  
Windows, Linux/Unix, Apple

Phil Pope  
0417 453 545  
[glenoracs@gmail.com](mailto:glenoracs@gmail.com)  
20 Corrowong Rd. Delegate NSW

### Delegate RTC

Is currently Closed due to Covid restrictions  
Some services can still be accessed by ringing  
Sharon on 64588333

### Covid Getting Closer

Covid has been detected in the sewage at Marimbula, Cooma and Thredbo. So far no active cases has been reported in the Snowy Monaro LGA but this could change quickly.

Be Covid Safe and abide by regional Health Rules.

### Victoria Border Pass

You currently need a Victoria Border Pass if you are going in or out of Victoria in the Border Bubble.

Passes can be obtained by going to the Victorian services website.

<https://www.service.vic.gov.au/services/border-permit/home>

You do not have to print the pass just having it available on your phone email is enough.

### Covid Vaccinations at Bonang

Orbost Regional Health will be at Bonang Hall again on the 14th September to offer COVID vaccinations. For more information please call Birgit on 04 9109 0452.

## FABULOUS FUNKY SHOES

Joan Jones has been making the most of her time at home, by adding to her collection of colourful high heeled shoes. Joan has a special talent for turning ordinary items into showpieces and below are some samples of her latest works of art. If anyone has some high heels that they no longer wear, don't throw them away, drop them off at Joan's, so she can continue with her hobby. Below: Some of Joan's colourful creations.



## BLOWFLIES AND BULLDUST

Many of the older generation will remember Mike Nixon who was in Delegate in the sixties as Manager of Australian Estates Stock and Station Agency. Mike threw himself wholeheartedly into town activities, being a pretty good Rugby league and tennis player. He was well liked and people were sad to hear of his untimely death from a heart attack at Wodonga in 2003. Mike was a man of many talents and wrote a weekly column for the Stock and Land newspaper. He also published a book of jokes called "Blowflies and Bulldust" and as we all need a laugh at the moment, here is one of them.

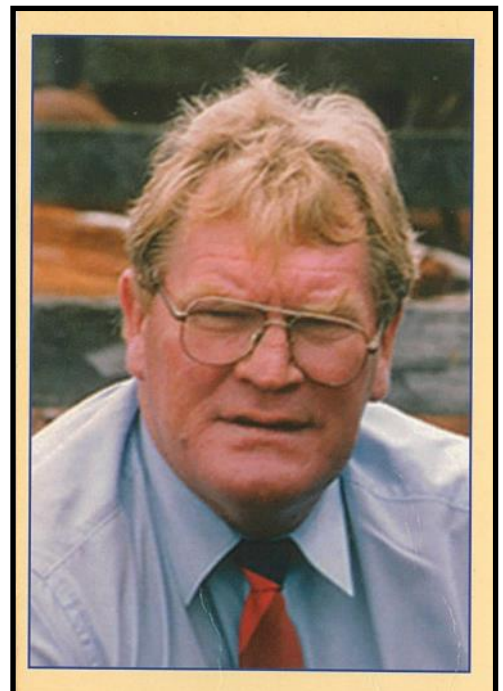
### EVERYTHING IS BIG IN TEXAS

A blind man decided to visit Texas. When he stepped on the plane and felt the seats he said "Wow these seats are big." The person sitting next to him said everything is big in Texas:

When he arrived in Texas he visited a bar and ordered a beer and received a mug. He exclaimed "Wow these mugs are big. The barman replied. "Everything is big in Texas.

After a couple of beers the blind man asked the barman for directions to the toilet. "Second to the right" the barman said. The blind man headed for the toilet, but accidentally tripped over and missed the second door.

Instead he entered a third door, which led to the swimming pool, and he tripped again and fell into the pool. Scared to death the blind man began shouting. "Don't flush it, don't flush it"





## RECIPES

### BANANA FRITTERS

2 cups plain flour

2 teasp baking powder

1 ¼ cups water chilled.

6 Bananas

Vegetable oil

Sift flour into bowl, add Chilled water, mix into smooth batter – about 10 mins.

Meanwhile add vegetable oil into pan about 3 cms. deep. Heat to high.

Peel bananas and halve lengthwise, dip in remaining flour then in batter. Fry in batches for 3 or 4 minutes.

Drain on kitchen paper, serve immediately with golden syrup or corn syrup and ice cream.

### CHOCOLATE PEANUT BUTTER SLICE. (No bake)

1 cup peanut butter, 2 cups choc melts, ½ cup icing sugar, 1 pkt plain sweet biscuits, 100g. Butter. Block of cooking chocolate.

Melt butter and peanut butter over low heat, crush biscuits add to pan with sugar. Line a baking tray and spray with oil, add mixture, smooth.

Pour melted chocolate over base

### EASY CHICKEN PARMIGIANA

4 Chicken Schnitzel pieces fried or baked till cooked through

Cover with Pasta sauce

Slices of ham (optional)

Top with mozzarella cheese.

Place under griller till cheese has melted

Alternatively, make your own schnitzels by splitting chicken breasts lengthwise and placing between gladwrap and flattening with a rolling pin. Dip in seasoned flour, then beaten egg, followed by bread-crumbs.

Japonica and Daffodils,  
Harbingers of spring.



# *Delegate Café*

**64 Bombala St Delegate**

**DINE IN - TAKE AWAY**

**OPEN 7 DAYS**

**Fruit & Veg - Groceries**

**DVD Hire - Eftpos**

**Tel (02) 6458 8171**

**Pizza available most Friday & Saturday Nights**

***New Trading Hours for***

***Sundays 9.30am to 2pm***

## **DELEGATE HOTEL**

*Your host: Paul Herringe*

**Accommodation  
Counter Lunches**

**Spin to win every Friday  
night.**

**Pick of the table and cash**

**Sky Channel & Pub Tab,  
ATM and Eftpos**

**Ph: 6458 8091**

## ***TALBOT TRANSPORT***



### **LIVESTOCK & GENERAL**

**1 Hensleigh Street, DELEGATE 2633**

**Mobile: 0418 516 076**

**Phone: (02) 6458 8085**

**Fax: (02) 6458 8055**

# We want to hear your story

## Heartbreak To Hope

Personal recollections are being sought from people in East Gippsland affected by the 2016-19 drought, the 2019-20 bushfires that followed, and COVID-19 that impacted recovery. These will appear in a book that will be titled Heartbreak To Hope.

Submissions can be in the form of stories, poems, photos, drawings, or anything else suitable for print media. The maximum length is 1000 words. Content can be about suffering, survival, resilience, recovery, community, coping, healing, or anything related to the bushfire events.

For more information or to submit your content go to:

[www.gclp.asn.au/heartbreak-to-hope](http://www.gclp.asn.au/heartbreak-to-hope)

**Proudly  
Supported by**





**Nutrien**  
Ag Solutions™

**Delegate**

**Tel: 6458 8004**

**Livestock— Tony Brady,**

**Sam Platts**

**Agronomy— Milly Arnold**

**0488281253**

**Merchandise**

**Insurance - Wool**

**Finance - Fertilizer**

**Delegate  
Hair Boutique**



**Open**  
**All Day Fridays**  
**Delegate School**  
**of Arts**  
Call in on the day  
or telephone  
**0427587240**  
For an appointment

**PLUS For all  
Your Floral  
Arrangements**

weddings,  
Birthdays,  
Anniversaries,  
Wreaths and  
Private  
Functions

**Phone Pam**  
**on 6458 4346**  
**Mob: 0427587240**



#### WHEN THE PRESBYTERIAN CHURCH WAS SAVED FOR DELEGATE.

An article in the Monaro Post in 2007, carried the good news that following the effort of several parishioners, the historic Presbyterian Church was withdrawn from sale. Original plans by the Diocese was to put the building and furniture up for auction.



The Church was dedicated and opened in 1861, the building being erected by William Moore and John Campbell. The bell which stands today was erected in 1905 and re-erected in 1965.

The Church holds some fine furniture, much of which was donated by parishioners, such as the beautiful old organ, which replaced an earlier model in 1901. Marble memorial plaques on the walls commemorate young men who dies on the Western Front. The original shingle roof was replaced in 1912. Left: A group at the steps into the church. Left to right. The late Bessie Cameron, Maureen Peisley, The late Natalie Ingram and Enid Stewart, and Beryl Philips.

POSTSCRIPT. The Sub-Committee elected to look after the church, have made many improvements, including a new outdoor toilet, painting the roof, exterior and interior and plan a new cement path at the entrance.

## **A story by Brian McQuillan schoolteacher.**

The following is a story by Brian McQuillan, a returned soldier from WW2 who was appointed to teach at the Delegate River School. During his tenure locals persuaded him to become Secretary of the Progress Association of the North Gippsland Shire. Correspondence from the shire drew the Committee's attention to the Lord Mayor's holiday Camp at Portsea, which was to become an annual ten -day holiday for country children, in particular for those living in remote areas. The Committee were interested and decided to advertise this event in the district. Early indications showed that about 20 children, 10-14 years were interested. We ran into difficulties in that we

tr of children to attend the camp had dwindled to six. Beulah and John Cameron, one of Sid Cameron's boys, John Ingram (son of Reg at the Bonang store, John and Mervyn Crawford and two extra boys at Orbost, one by the name of McMahon. could not find a "leader" to accompany the children. The camp was the second week in December and our third child being born late in November, I was reluctant, but my wife persuaded me to go as leader. Hastily, application for leave had to be forwarded to the Education Department and this was not readily granted. However, at the last moment permission was granted, but by this time the number had dwindled to six.

I will never forget the support given to me to help get these children away. Bert Pleydell and C. McKay who found the fares for the Crawford boys, the late Alex Cameron who paid for the taxi to take us to Orbost, and Reg Ingram who met us at Orbost on the return journey and brought us all back to our own district.

We departed from Delegate River at 5am with Jim Ryan in his taxi, then bus from Orbost to Bairnsdale and then by train to Melbourne. A bus then took us to Portsea, arriving at 1am the following morning.

Why was this journey so special? Most of these young people had lived during a period of rationing during the war years. Charcoal burners and petrol rationing limited the experience of travel and new environments for these students. As the bus passed through Lakes Entrance, a complete hush fell upon my passengers and then we climbed out of the Lakes to the top of Kalimna. I asked John Crawford what he thought about the scenery and his simple reply was "I never thought it would look like that" and John was quite an intelligent boy at school.

The train journey resembled a cattle truck, with little heads peering out through the windows of the carriages absorbing everything that they could see. Needless to say, I was inundated with thousands of questions. Other passengers in the carriages were intrigued with these children.

Blackened faces had to be cleaned from the soot of the steam engine and with blood shot eyes, the little company eventually stepped on to Flinders Street Station mid the hustle and bustle of a crowded platform and the variety of noises that vibrated through the atmosphere, to be welcomed personally, by Sir Raymond Connolly, Lord Mayor of Melbourne and his staff.

Oh! what a sight! These bewildered little faces peering up at this strange man who was making such a fuss of these country children. Within a few minutes there were dozens of people gathered around showing interest in the proceedings. Sir Raymond shook hands with each child and asked questions about themselves, their families and district. Such a friendly approach made these young people warm to him.

Trams rattled and clanged, cars raced along the street tooting their horns, and people bumped into us as we struggled with our luggage to board the bus to Portsea. The children had never seen anything like this before in their lives. Tall buildings, coloured lights, neon signs and flashing electric trains added to their interest. Unfortunately, Melbourne welcomed us to one of its heavy downpours and as we travelled down the bay, weary heads began to nod. The camp at 1am at Portsea was dismal welcome, wet deserted and one body sound asleep – John Ingram. Quickly we were shown to our quarters. All the boys shared one room with double bunks, but Beulah Cameron, who burns into tears. She was to be separated from her brother and friends and was taken away to the "girls" quarters. I shared the room with boys and like them quickly fell asleep.



**Delegate Multi Purpose Service**  
**Craigie St, Delegate 6459 8000**

**Wellness Clinic**

Monday 9am-10am

Every week except Public Holidays

No Appointments necessary.

A clinic where well people come for health monitoring and a variety of nursing procedures such as:

- Wound care
- Blood pressure readings
- Blood sugar readings
- Suture or clip removal
- Injections with Doctors written order
- Other procedures that do not require a Doctor

**Pathology clinic (conducted by Pathology West)**

Wednesday 9.30am – 10.30 am.

No appointment necessary.

Every week except public holidays.

**Women's Health Clinic**

4th Thursday of the Month

Phone 1800999880 for appointments

**Other Community Health Services**

- Dietician
- Diabetes Educator
- Immunisations
- Podiatry
- Child and Family Health Nurse
- Generalist Community Health Nurse

To refer to any of the above please ring Community Health Central Intake team on 1800999880

**Victorian Visits**

Community Nurse visits Victorian Clients every fortnight. For referral or info ring

Orbost Regional Health 03 5154 6666 or

Delegate Community Health Nurse  
on 6459 8000

***OLD DELEGATE POST OFFICE***

***Home of the***

***Healing Hub and Creative***

***Hub***

***And Retailing***

***Homewares***

***Gourmet Foods***

***Handcrafted Gifts & Toys***

***Thursday to Saturday***

***10am to 4pm***

***40 Bombala St Delegate***

***02 64585289***

***Thursday afternoon Creative***

***Hub Workshops***

***12.30 to 2.30pm***

***Small charge for materials***

***Serendipitous Markets last***

***Saturday of the month.***

***Barista Coffee, Hot chocolate and Tea  
now available at the old post office.***



At 6 am I awoke and to my amazement all the bunks were empty. Panic! Where on earth could they have gone. No sign of them around the buildings. No one else in sight – still as deserted as when we arrived. Eventually I heard voices which directed me to “a fighter plane and bomber”, which we re the play equipment, and here the boys were conducting their own fighter warfare and had both planes all to themselves.

A re-union with Beulah at breakfast and the wonderful experiences began. Games on the beach, paddling in the surf, photos being taken and the children appeared on the front page of the Sun the next day, showing the group building sand castles, a map of their journey and article about them.

Free medical examinations were given to every person in the camp and free dental treatment was given. Mervyn Crawford need both medical and dental treatment and was transferred to the Royal Children's Hospital. This meant that he would not be able to return with u. Arrangements were for John to stay with him, so they both had six weeks at the camp. John finished “welterweight” boxing champion three times over that period, because other camps commenced at the end of 10 days.

The Herald Learn to Swim campaign taught everyone to swim, and our children could swim 25 yards in the bay. Excursions were conducted along the main beach with long tramps over the sand dunes. Award were given for the Care of sleeping quarters, making of beds and general cleanliness and our group won that.

At night time we conducted our own concerts and much talent was unearthed. New friendships were formed. One of our best friends was the cook, who took much interest in our children. When we were departing from the camp, he filled a big case with sandwiches, cakes and fruit for our long journey homeward. So much happened that the ten days just flew.

### **Areas open for Spring firewood collection**

From Wednesday 1 September firewood in Gippsland can be gathered from designated firewood collection areas in State forests for personal use.

Under the current coronavirus (COVID-19) restrictions, if firewood is essential for home heating or cooking people can travel to the closest designated firewood collection area as long as physical distancing requirements are followed. Stay as close to home as possible.

Gippsland Deputy Chief Fire Officer Geoff Conway said there is an increased demand for domestic firewood which is putting strain on the limited availability in the region.

“Regular updates on available firewood are being provided to communities to ensure people can collect the firewood they need safely,” he said.

Find out more about your local collection areas here: [www.ffm.vic.gov.au/firewood](http://www.ffm.vic.gov.au/firewood)

As a result of bushfire preparedness works in the Latrobe, Macalister and Tambo districts, there are additional firewood collection areas this Spring in Walhalla, Cobbannah and Colquhoun State Forest.

“Firewood collection areas are being more realistically mapped for the benefit of communities to reflect where firewood can be practically and legally collected.”

“All firewood collection areas in Gippsland have changed from block to roadside areas where firewood can be collected within 50 metres of a road.”

“Please note that due to a lack of available firewood there will be no collection areas available south of the Princes Highway in Latrobe District in 2021.”

DCFO Conway said, “we are balancing the need to ensure the fallen timber doesn't pose a fire risk with the desire to provide the community with firewood and ensure fallen logs are still available to wildlife.”

“It should be remembered firewood is an unpredictable and finite resource and this is why we strongly encourage people who rely on firewood for heating and cooking to plan their firewood needs and explore all energy options.”

Financial assistance is available for people on low incomes who purchase firewood. <https://www.ffm.vic.gov.au/firewood/energy-concession-and-support>

“Most people do the right thing and stick to the collection limits of two cubic metres per person per day and a maximum of 16 cubic metres per household per financial year however people should know authorised officers will be patrolling parks, forests and reserves to catch those who aren't.”

DCFO Conway said your safety in the forests is important.

“Please be COVID safe and aware of the environment around you at all times, trees may fall or drop limbs without warning.”

Spring firewood collection season will close November 30.



## A Wet Spring is Great for Slugs, Snails and Weeds and Growth



The slugs and snails that do the damage in the garden are imports from Europe. Australian native slugs feed on algae and lichen and can be classed as beneficials. They are the ones that are found in the bathroom cleaning the shower and removing algae from paths.

Interestingly European snails have four feelers (see picture left) and all Australian species have only two feelers. The European slugs are small and grey whereas Australian species are large and coloured.

The Leopard slug is common in the garden and here it is seen cleaning a path.



Those European slugs seem to do most damage, they can make newly planted seedlings disappear almost overnight and they spoil flowers such as daffodils and lilies. One way to assess how much of a problem you have in the garden is to put a piece of masonite or similar down (about 300mm. square) and check after a day or so to see how many slugs have sheltered underneath. If there are 8 or more the problem is severe.

Using slug and snail bait is a vexed issue for gardeners who share their plot with children or pets and dogs in particular are very prone to poisoning with snail bait. Although it is easy to reduce snail numbers without using chemicals by collecting them (the best time is a wet night by torchlight) slugs are difficult.

The newer baits based on iron compounds are safe and more effective than the older types and have the bonus of giving a fertiliser boost of much needed iron as they break down. The chart explains the type of snail killers available and effectiveness. The research was conducted by University of Melbourne. Commercial products are dyed to a colour code so that if poisoning occurs it will be known which chemical is the culprit.

PRODUCT	COLOUR	TOXICITY	EFFECTIVENESS	POISON level
Iron EDTA complex	Brown	Low	Excellent slugs snails and slaters	Not Scheduled
Methiocarb	Blue	High	Very Good	Schedule 5
Metaldehyde	Green	Highly toxic to mammals (Kids, dogs, cats) and birds	Poor at low temperatures Good at high temperatures	Schedule 5

It is easy to see that the iron based one is the best choice to protect seedlings with the benefit of reducing slater numbers that will also eat tender green plants although they mostly eat dead organic matter.

**Weeds** have germinated everywhere and it is tempting to pull them out because it is such an easy thing to do when the soil is softened by rain. When pulled from a wet soil the roots come with large



# Shoalcoast Community Legal Centre Inc.

## FREE LEGAL ADVICE

Providing professional legal service in the  
Shoalhaven, Eurobodalla, Bega Valley,  
Snowy Monaro and Queanbeyan / Palerang  
Local Government Areas



**Get  
In  
Touch**

1800 229 529  
80 Bridge Road Nowra NSW 2541  
PO Box 1946 Nowra NSW 2542  
info@shoalcoast.org.au  
www.shoalcoast.org.au

Shoalcoast Community  
Legal Centre Inc.



### CENTRELINK

- Are you receiving appropriate Centrelink benefits?
- Are you unhappy with a decision Centrelink has made?

### CONSUMER ISSUES

- Not happy with a service/product you've received?
- Want to know if you can get a deposit or your money back?
- Are you going to NCAT or the Local Court regarding a consumer issue?
- Having problems with your insurer?

### TENANCY

- Are you having trouble getting a tenancy – are you blacklisted or have you fallen off the public housing list?
- Having trouble during tenancy – trouble getting repairs, or an unfair rent increase, have you fallen behind on the rent?
- Having trouble at the end of a tenancy – do you want to leave or is the landlord kicking you out? Having problems getting your bond back?

### PLANNING AHEAD

- Why make a will?
- Do you have questions about someone managing your finances or the way you live your life?
- Think someone is mismanaging a Power of Attorney or Enduring Guardianship?

### TRAFFIC OFFENCE

- License suspensions, problems with RMS

### CREDIT AND DEBT

- Does someone owe you money?
- Is someone chasing you for money or are you having trouble paying your bills or debts?
- Do you have unpaid fines?

### PERSONAL SAFETY

- Feeling unsafe in your workplace, in the community or at home?
- Have you been a victim of crime and need support or compensation?

### FAMILY LAW - SEPARATION

- Have you recently separated from your partner or want help to get a divorce?
- Do you want to know your rights about property when you separate?
- Do you have questions around parenting arrangements for children (or grandchildren) after separation – what they might look like and how you can get them?
- Questions about child support?

### CHILDREN

- Have community services (DCJ/ FaCS/DoCS) become involved with you and your children?

### EMPLOYMENT

- Are you being paid correctly at work?
- Do you feel bullied or discriminated against?
- Have you been fired or felt you had to resign?

### NEIGHBOUR DISPUTES

- Having arguments about a fence, noise, or trees with your neighbours?

Shoalcoast CLC provides  
free confidential advice available by phone or appointment.  
Phone **1800 229 529** today.

*Shoalcoast Community Legal Centre acknowledges the traditional custodians of the land on which we live and work. We pay our respects to Elders past, present and emerging.*

## MAINTAINING GOOD BALANCE

A recent article in the Merimbula District News stressed the importance of keeping a good balance. They state that there is growing evidence that maintaining good balance has huge benefits. It can even predict how long you will live. A major 1999 study showed a relationship between how long people in their 50's could stand on one leg with their eyes closed and whether they would die of cancer, heart attack and other nasties. Of course for the older generation maintaining good balance is a great help in preventing falls. If your brain isn't helping your balance, it's likely to failing at some of its other jobs too. Sharpen your stability and help your general health.

The average time for standing on one leg with your eyes closed is:  
For under 50's = 15 seconds, 40-49 = 13 seconds, 50-59 = 8 seconds. At 70 and older the average is 3 seconds.

A suggestion for this exercise is while you are cleaning your teeth, or washing up.



# HERE & THERE

Many Happy Returns to all those born in September, especially Russel and Allen Buckman, Chelsea Kimber, Renee Crawford, Helen Crawford, Kyden Reed, Nail Curry, Sandra Walker, Jan Ingram.



The sudden death occurred recently at Canberra Hospital of Pam Clear, after complications from a fall. Pam is survived by her husband Max, daughter Megan, son Ryan and grandchildren, Jack, Kate, Callum and Dillon. Sympathy is extended to all. Like many families, during Covid, they were only allowed the immediate family at the graveside service. Pam's many friends would have wanted to be there to support her family at this sad time.

Kristy McBain has announced that all patients from the Southern NSW local health district can now enter the ACT for scheduled medical appointments without obtaining exemptions. This will be a relief for the many, who rely on Canberra for their specialist services.

NSW Health is allowing two people to exercise together out of doors., so golfers, walkers etc can enjoy some freedom from the lock down.

Two successful Poll Hereford sales were recently held in Delegate, with Bendoc Park selling all 13 bulls on offer, with a top price of \$1350.00. Josslyn Poll Herefords also held a bull and female sale on August 20th., selling three bulls and three heifers.

There is no shortage of advice as to what to do during a Covid lockdown. If the weather is nice there is no better activity than being out in the garden. On bad days, which we have had quite a lot of, try cooking something nice in the comfort of your kitchen. Some easy recipes on Page 4. If course too many treats are not good for the waistline, but there are plenty of jobs, to do inside which you may have been putting off. Why not sort your photos into some semblance of order and of course if you find any interesting ones for our "Looking Back" page, let us scan then.

Following some good rain everywhere is looking nice and green with daffodils and blossoms providing some colour, it helps to lift the spirits after a cold winter and continuing Covid lock downs.

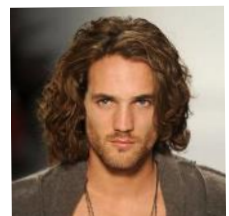


The Rural Transaction has been closed to the public since Covid restrictions began. Unfortunately it happened on a bad week, when people were wanting to pay their rates. Sharon helped out as best she could and we hope everyone managed to overcome the inconvenience. As we are able to come in and work on the paper in solitude we are able to put out the September edition. Not a lot of happenings, so it may be smaller than usual.



Plans are being made to hold a Writers Workshop in October, but like all plans at the moment, it is entirely dependent on what the Covid situation is. The School's 100th Anniversary celebrations have been cancelled and the Heritage week-end is in doubt. Life has been put on hold for everyone but fingers crossed our little town stays safe.

Council elections have been postponed again, HSC exams are on hold, schools are closed. There will also be a few people sporting new hairdo's ,if hairdressers aren't allowed to open soon. Back to the sixties for the men.





# LOOKING BACK



*This very old photo featuring a Delegate football team was obtained courtesy of David and Kim at Bombala News-agency. There are two Bartley brothers one 3rd. from left back row, and 4th. from left front row, and in the front row 3d. from left is GA (George) Reed, and 2nd from right Carl Price. Unfortunately we have not come up with any more names, but Mrs. Jean Manning thinks one gentleman in the back row may be a Simpson.*

Below: The Crawford sisters—Mr. and Mrs. Frank Crawford raised a large family of twelve in Delegate, 7 girls and five boys. This photo is courtesy of Elizabeth, daughter of the youngest Crawford girl, Phyllis.





# Community Information

**EMERGENCY / AMBULANCE: 000**

**FIRE: 000**

**POLICE**

**Delegate: 6450 3360**

**Bombala: 6458 3444**

**Cooma: 6452 0099**

**Bendoc: 6458 1523**

## **CHURCHES**

### **CATHOLIC**

Father Mick McAndrew 02 8331 7609

Sister Teresa Keane: 6458 3045

1st 5th Sundays Mass Delegate Sat  
5pm and Bombala Sunday 8am

2nd & 4th Sunday –Liturgy Del.Sat 6pm

Bombala Sun. 9am

3rd Sun. Mass Del. Sun 8am Bom. 10am

Mass Delegate MPS 2nd Wed. 10.30am

Website [www.cg.org.au/bombala](http://www.cg.org.au/bombala)

Email: [joeysdelegate@gmail.com](mailto:joeysdelegate@gmail.com)

### **ANGLICAN**

Rev. Judy Holdsworth 04 0853 1544

Rev. John Kuruvilla 0406765443

Services: 11am every Sunday.

**DELEGATE MPS 6459 8000**

**BOMBALA MPS 6458 5777**

Community Health Central intake team on 1800 999880

**Victorian Visits**—Community Nurse visits Victorian Clients every fortnight. For referral or info ring Orbest Regional Health 03 5154

6666 or

Delegate Community Health Nurse on 6459 8000

**Bombala Medical Practice 6458 3022**

**Healthdirect and GP helpline 1800 022 222**

(See advert in paper for detailed information)

**MONARO FAMILY SUPPORT SERVICE**

Bombala Office: 6458 4888

open Tues to Thurs - 9:00am to 5:00pm

**Delegate Pre School: 6458 8196**

**Delegate Public school: 6458 8183**

**DELEGATE PROGRESS ASSOCIATION**

RTCT Centre - 6458 8388— [dpaooffice@bigpond.com](mailto:dpaooffice@bigpond.com)

Newspaper: [delegateprogress@exemail.com.au](mailto:delegateprogress@exemail.com.au)

**Tubbut Access Centre 6458 0295**

**NRMA/RACV: John Stewart: 6458 8047**

**DELEGATE CARAVAN PARK: 0447151228**

**Delegate Progress Association Inc.**

**66A Bombala Street**

**DELEGATE NSW 2633**

**PH 6458 8388 Fax 64588 374**

**E-mail [dpaooffice@bigpond.com](mailto:dpaooffice@bigpond.com)**

**[delegateprogress@exemail.com.au](mailto:delegateprogress@exemail.com.au)**

**(for paper)**

\*\*\*\*\*

**‘Delegate Doings’ Subscription:**

\$40.70 by Post

Email \$16.50.

\*\*\*\*\*

Cash or Cheque payable to

The Delegate Progress Association Inc

Amount \$ \_\_\_\_\_

Name

Address or email:

The Delegate Doings is published by the Delegate Progress Association. We welcome information about meetings and reports on functions and other activities of local people and organisations, factual historical articles and poetry etc. We do not publish letters to the editor. The publisher accepts no responsibility for any advertisement, or articles. Any advertisement or article is published at the risk of the contributor, who accepts liability for any intended publication. All such contributors agree to indemnify the publisher and warrant that the material is accurate and is neither deceptive or misleading, in breach of copyright, defamatory, or in breach of any other laws and regulations.

## **ADVERTISING IN THE “DELEGATE DOINGS”**

<b>Spot Ad:</b>	<b>1</b>	<b>6</b>	<b>11</b>
<b>\$5 cash—\$7.50 a/c</b>	<b>Issue</b>	<b>Issues</b>	<b>Issues</b>
<b>1/4 Page</b>	<b>\$17.50</b>	<b>\$87.50</b>	<b>\$157.50</b>
<b>1/2 Page</b>	<b>\$35.00</b>	<b>\$175.00</b>	<b>\$315.00</b>
<b>Full Page</b>	<b>\$70.00</b>	<b>\$350.00</b>	<b>\$630.00</b>
<b>Back Page</b>	<b>\$80.00</b>		
<b>Full Page Insert</b>	<b>\$90.00</b>		

**Colour advertising: prices on application**

clod of earth leaving a large raw soil surface ideal for more seeds to germinate. Another negative is that it is a natural reaction to shake this soil off in an attempt to refill the hole. Soil particles will inevitably land on leaves of desirable plants which will efficiently transfer soil borne pathogens which normally rely on rain splash alone.

When weeding it is best to disturb the soil as little as possible so a good method for the bulk of plants is to slide a sharp knife just below the surface to sever roots. Avoiding soil disturbance is important on another front. The soil already stores masses of viable seed throughout its depth. These are stimulated to germinate when exposed to light and the smaller seed types are particularly responsive. Needing light to germinate makes survival sense because if a small seed germinated deep in the soil it would not have the nutritional reserves for the first leaves to make it to the surface.

At this time of year we are impatient to plant all those warm weather varieties even though we really know at heart that late frosts will likely to undo all our hard work! There is one plant that avoids the problem. **Petunias** are an excellent choice for early planting in this district because they will tolerate frost down to  $-4^{\circ}\text{C}$  and later, as summer progresses, as much heat as it can produce. The flower form is quite varied from single to frilled and fully double. The colours are endless too some come with white edges and stripes. My favourites are the cool blues with veins because by summer the garden can look quite fussy with a lot of yellow, orange and pink and the blue tones rests the eye.



**RUNNY NOSE OR COVID?**

The only way to be sure is with a test  
at the first sign of any symptom.

**ONLY A TEST  
CAN TELL**

**For testing locations,  
visit [CORONAVIRUS.vic.gov.au](https://coronavirus.vic.gov.au)**

Authorised by the Victorian Government, Melbourne

