

February 2021

**1.50 incl.
GST**

Delegate Doings

**Delegate Progress
Association**



ISSN 1446-6716

Volume 20, issue 2.

LADIES DAY OUT

With the lack of social functions in the past 12 months, local ladies will no doubt welcome the news that there will be luncheon and afternoon tea in the Delegate School of Arts on Sunday afternoon the 28th February, commencing at 12 noon until 4pm. There will be a guest speaker TBA, and a choice of two craft demonstrations. Karen Cash will demonstrate the art of weaving with natural materials and Geraldine Dwyer will make wax wraps which are basically re-usable wraps which can be used in place of plastic wraps. She will also show how to make a small gift bag.

These activities are organised by Monaro Family Support Service and Snowy Monaro Regional Council's Recovery Team and funded by News Corp. See page 6 for poster.

COUNTRY CLUB NEWS:

What a great Children's Xmas party we had. Around forty children turned up and were treated to a fantastic day. Santa arrived in great style as usual and Roger entertained the kids with a singalong after Santa had left. (See more Country Club News on Page 12)



Next Issue: 5th March

then: 2nd April

and: 7th May

Inside this issue:

| | |
|-------------------|----|
| Bundian Gallery | 3 |
| Charity Shave | 4 |
| Land use changes | 6 |
| School News | 10 |
| Country Club News | 12 |
| Here and There | 13 |
| Looking Back | 14 |

Dates for your Calendar

11th February— DPA General meeting
20th February—Bombala Rotary markets
28th February—Women's Connect Day—School of Arts.
6th March—Delegate Show **CANCELLED**
20/21st March—Bombala Show Pavilion entries to be entered from Tues 16th to Thursday 18th 3pm to 6pm at show grounds.

CONTRIBUTORS TO THE PAPER ARE REMINDED THAT IT IS PRINTED ON THE FIRST FRIDAY OF EACH MONTH, EXCEPT JANUARY.

PLEASE BEAR IN MIND WE NEED COPY AND PHOTOS FOR THE PAPER AT LEAST TWO DAYS BEFORE.



Hardware Repairs / Software Repairs
Networking
Computer Upgrades
Virus Removal

Assistance with all computer problems
Windows, Linux/Unix, Apple

Phil Pope
0417 453 545
glenoracs@gmail.com
20 Corrowong Rd. Delegate NSW

THANKYOU

Sandy Cameron, Julie, Stephen, Jodie and their families would like to thank you for your kind thoughts, flowers, cards and phone calls on the recent passing of Alan. He was a much loved husband, father and grandfather and a friend of many.

Alan's ashes and those of his brother John, who passed away just a month earlier, will be laid to rest in the Dellicknora Cemetery beside their brother and parents at a later date.

THANKYOU

Your kind donations go above and beyond what I could have ever hoped to imagine. I sincerely thank you for all your incredible help to Zac, Danny/Lane Jamieson and for those who took part in helping raise the money. Thank you for making a difference through your compassion and generosity.

Ann Marie Stokes

*Happy New Year to
all our readers.*

*We hope 2021 will
be a brighter and
happier one for all.*



ATTRACTIVE NEW EXHIBITION IN BUNDIAN GALLERY.

An excellent exhibition of Aboriginal art in the Bundian Gallery by Eden artist Alison Simpson is creating much interest. Alison who has only taken up art seriously a few years ago also paints attractive landscapes.

The Bundian Gallery also has small items for sale such as framed and unframed prints by aboriginal artist Jo Jo, and prints and cards by Cheryl Davison, Natalie Bateman and other artists. Below: Alison Simpson's art and framed print by Jo Jo.



LOCALS SHAVE THEIR HEADS FOR CHARITY

Local man Zac McGowan, recently encouraged others to join him in shaving their heads for a worthy cause. Eight brave people took part and succeeded in raising over \$2000, which was distributed to two local families who were in need of a helping hand. Congratulations to Zac for his enterprise and to all who took part. Below: A photo of the group proudly showing off their bald pates.



NEW GREAT GRANDCHILD FOR GAIL AND MAX

When Gail and Max Small recently visited Gail's son in Coffs Harbour, they were delighted their new great grandson, Hugo George, who was born in November, 2019.

Proud grandparents are pictured holding Hugo.



Delegate Café

64 Bombala St Delegate

DINE IN - TAKE AWAY

OPEN 7 DAYS

Fruit & Veg - Groceries

DVD Hire - Eftpos

Tel (02) 6458 8171

Pizza available most Friday & Saturday Nights

ELGAS Distributor

Pickup Only (Sorry no Delivery)

DELEGATE HOTEL

Your host: Paul Herringe

**Accommodation
Counter Lunches**

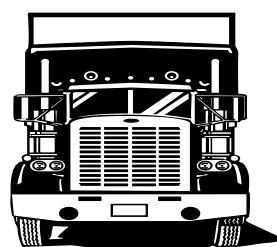
**Spin to win every Friday
night.**

Pick of the table and cash

**Sky Channel & Pub Tab,
ATM and Eftpos**

Ph: 6458 8091

TALBOT TRANSPORT



LIVESTOCK & GENERAL

1 Hensleigh Street, DELEGATE 2633

Mobile: 0418 516 076

Phone: (02) 6458 8085

Fax: (02) 6458 8055

Monaro Women Community Connect

Take a break
& let's get

Together



Delegate this one is for you...

Women Community Connect is on tour and we would love to see you. It is a chance to come together and take time out for you. We will share stories, feel supported, relax and learn a little along the way.

Melissa McKendrick will join us to chat about keeping bees and designing a native and sustainable garden on the Monaro. Then we will weave natural plant material with Karen Cash or learn the technique to make your own beeswax wrap and a gift bag with Geraldine Dyer.

Date: 28 February 2021

Time: Midday – 4.00pm

Where: Delegate School of Arts

What to bring: Just yourself

Inclusions: Lunch and afternoon tea

Cost: Free

RSVP: 21 February 2021 – please nominate the craft activity you would like to participate in.

RecoveryAssistance@snowymonaro.nsw.gov.au

1300 345 345

Please RSVP as places are limited. Guests must be over 18 years.

A CHECK-IN/REGISTRATION PROCESS AND
COVID SAFE PRACTICES WILL BE IN PLACE.



monaro family
support service

GET READY
Snowy Monaro

PROPOSED LAND USE CHANGES ACROSS THE SNOWY MONARO REGION

Regional ratepayers are not happy with the Council's proposed land use changes, in particular the proposal to rezone land to increase the size of minimum lots for dwelling approvals from 100 acres to 250 acres. Submissions to Council closed on February 1st but many are calling for the time-frame to be extended and for the draft strategy to be rewritten. Councillor John Last moved the motion at the Council meeting on February 1st that Council form an advisory panel with representatives from farmers, commercial representatives and the general public to advise Council on the LEP

He also moved that the date for the LEP be extended to 1st June, 2021 and further if necessary.

Various Committees throughout the Shire have been holding meetings to discuss this matter, the DPA's representative being Grantley Ingram and Robin Guthrie.



Delegate

Tel: 6458 8004

Livestock— Tony Brady,

Sam Platts

Agronomy— Hugh Platts

0488281253

Merchandise

Insurance - Wool

Finance - Fertilizer

*Delegate
Hair Boutique*



Open
All Day Fridays
Delegate School
of Arts
Call in on the day
or telephone
0427587240
For an appointment

**PLUS For all
Your Floral
Arrangements**
weddings,
Birthdays,
Anniversaries,
Wreaths and
Private
Functions
**Phone Pam
on 6458 4346
Mob: 0427587240**



50th BIRTHDAY CELEBRATION

Gail and Max Smallman travelled to Coffs Harbour in December to celebrate Gail's son Justin Sheehan's 50th birthday. Justin who is Gail's middle son, is the Superintendent of the Coffs Harbour Golf Club.



DELEGATE AND DISTRICT HISTORY

A group which formed recently to gather local history of Delegate and surrounding areas, including settlements over the border, are pleased with their progress in gathering together historical details and putting them together in draft book form. We encourage anyone who can contribute in any way to come along, or alternatively to provide us with written information. We are not only looking for historical facts, but would welcome personal stories of some of our pioneers. The Progress Association already have a good collection of photos, both on computer and at the history room at the School of Arts and would love to add to our collection. We would particularly like photos of historic significance including some of the pioneering families of the district and would of course return them after we copy them.

The late Malcolm Martin wrote an excellent history of Delegate several years ago, and our plan is to cover different aspects of our history and hopefully draw from a wider base. The history of Delegate has always been intertwined with the settlements over the border, that invisible line, which has never been a barrier to social and other forms of interaction. Below: An old photo of a group from Delegate obviously having a picnic before climbing Delegate Hill which although over the border in Victoria, provides a significant landmark for southern Monaro, being visible for quite a long distance.



Preparing for the climb to Delegate Hill

RHONDA STUART RECEIVES HERO AWARD.

We hear news from Heyfield in Victoria that Rhonda Stuart (nee Mead) formerly of Delegate, has received an award for her work as a community member.

Rhonda moved to Heyfield many years ago with her late husband Max, who was transferred by Vic Forests from Bendoc to Heyfield. The family group grew when Rhonda's sister Sue and her husband also moved to the town of Heyfield where they raised their families.

When their mother Dot sold her home in Delegate and moved to Heyfield, the family circle was complete.

R: Rhonda holding her award.



Delegate Multi Purpose Service
Craigie St, Delegate 6459 8000

Wellness Clinic

Monday 9am-10am

Every week except Public Holidays

No Appointments necessary.

A clinic where well people come for health monitoring and a variety of nursing procedures such as:

- Wound care
- Blood pressure readings
- Blood sugar readings
- Suture or clip removal
- Injections with Doctors written order
- Other procedures that do not require a Doctor

Pathology clinic (conducted by Pathology West)

Wednesday 9.30am – 10.30 am.

No appointment necessary.

Every week except public holidays.

Women's Health Clinic

4th Thursday of the Month

Phone 1800999880 for appointments

Other Community Health Services

- Dietician
- Diabetes Educator
- Immunisations
- Podiatry
- Child and Family Health Nurse
- Generalist Community Health Nurse

To refer to any of the above please ring Community Health Central Intake team on 1800999880

Victorian Visits

Community Nurse visits Victorian Clients every fortnight. For referral or info ring Orbest Regional Health 03 5154 6666 or Delegate Community Health Nurse on 6459 8000

OLD DELEGATE POST OFFICE

Home of the

Healing Hub and Creative

Hub

And Retailing

Homewares

Gourmet Foods

Handcrafted Gifts & Toys

Thursday to Saturday

10am to 4pm

40 Bombala St Delegate

02 64585289

Thursday afternoon Creative

Hub Workshops

12.30 to 2.30pm

Small charge for materials

***Serendipitous Markets last Saturday
of the month.***

***Barista Coffee, hot chocolate and tea
now available at the Old Delegate
Post Office.***



DELEGATE SCHOOL NEWS



Welcome Lliam Guthrie and Paige Nichol our new Kindy Class and our lovely new teacher Miss Ashleigh Buckley.

Ashleigh comes to us from Newcastle having graduated from Newcastle Uni in 2020.

She is very excited to be in Delegate and has already fallen in love with the school in her first week here.



FREE

One Day Workshop



Accidental Counsellor

ENROL NOW

WHEN

Wednesday 17 March
9.30am to 4.30pm

WHERE

Delegate School of Arts
Hall
38 Bombala Street
Delegate

WHO

All community members
Service providers
Volunteers
Business operators
Professionals

COST

Free
Lunch provided

Training the 'Accidental Counsellors' in our community

On a day-to-day basis we regularly find ourselves providing support to people who are experiencing difficulties. We want to help, but how should we respond?


This FREE one day workshop aims to provide you with a set of practical skills that enables you to respond to these situations with confidence and clarity.

HOW TO REGISTER

- Click on the **Enrol Now** button
or
- Visit our website
www.acwa.asn.au/ccwt/free-training-south-eastern-nsw
or
- Contact Yasmin Stein
02 8974 9825
yasmin@acwa.asn.au





Places for this FREE workshop are limited and registration is essential



Bombala Rotary Markets
Saturday 20th February 2021
8am - 2pm along the banks of
the Bombala River.

For more information or to
 secure your site, please contact:
 Geraldine Dyer 0448 351 962
 Tanya Ingram 0401 301 813
 or email: mgdyer@bigpond.net.au

COUNTRY CLUB NEWS

(By Carl)

We are back after the Xmas break with the Delegate Doings having a spell, so here is the club news.

I suppose everyone has been wondering what was going on with the golf course looking so terrible. Well a few blokes have been working tirelessly to seed, super and water the fairways since September, and it is looking great and up and running. All golf is now back on. Thank you Jordon, Nick and Aaron, for a job well done. 170 bales of hay were sold.

Don't forget all volunteers, that our volunteers day is the 13th February at 3pm. The Club wishes to thank you for your support and you are all invited,

Nadean and Jasmine are having great nights in the kitchen on Fridays, so come down for the perfect meal. The courtesy bus starts at 5.30pm, until late. Give the club a ring on 64588169.

Let us hope for a better year in 2021.



Staff and Volunteers who work hard to keep our Country Club running smoothly.

HERE & THERE

Many Happy Returns to all those who celebrated a birthday in January including Laken Clear, Michael Lewis, Phillip Reed, Christine Moss, Trent Tonissen, Georgia Reed, Chris Armstrong.



The recent good rain has benefited the streetscape plantings in the main street, with the maples looking very healthy. We can look forward to some spectacular autumn colour.

The district were saddened to hear of the tragic death of a young man, Toby Mustard, which occurred when he was a passenger in a car which overturned on a back road between Bendoc and Delegate.

Toby is survived by his parents, Wayne and Minnie, one brother David and sister Kate. The interment took place at the Delegate Cemetery on 22nd January following a graveside service. Sympathy is extended to all.

The death occurred in December of Delegate resident Reg Goldfinch. Formerly of Canberra he and his wife Pam moved to Delegate several years ago. Following a long illness Reg died in Bombala Hospital. His body was cremated and a memorial

service will be held at the Country Club on Saturday 6th 1pm.

Reg is survived by his wife Pam and two sons and grandchildren. Sympathy is extended to all.

The death occurred recently at Pambula of Brendon Ventry, whose funeral will take place on the 8th February at the Cann River Cemetery, followed by a wake in the Noorinbee Hall. Brendon is survived by his wife Robin, his children, two brothers Tom and Phillip and one Sister Phyllis. We extend our sympathy to all.

The local School of Arts is due for an upgrade by Council and the erection of a new toilet block and removal of the old kitchen at the rear of the building will the first cab off the rank. Council state that they have submitted a DA for stages 2 and 3 of the upgrade, which includes drainage, stormwater and building compliance upgrades which remain unfunded. Council will be submitting a grant application for stages two and three.

There has always been a problem with stormwater and drainage causing problems with damp.

The NSW/Victorian Border is open at last after closures beginning in July. Firstly it was the NSW border which was closed, with Police and Defense Force here for several months. Then after a short break the Victorian border closed to NSW and groups of 45 Victorian Police have been here for several

weeks. They have now packed up and gone back to Melbourne. However with Western Australia becoming a possible hot spot, and the unpredictability of outbreaks who knows what will happen next..

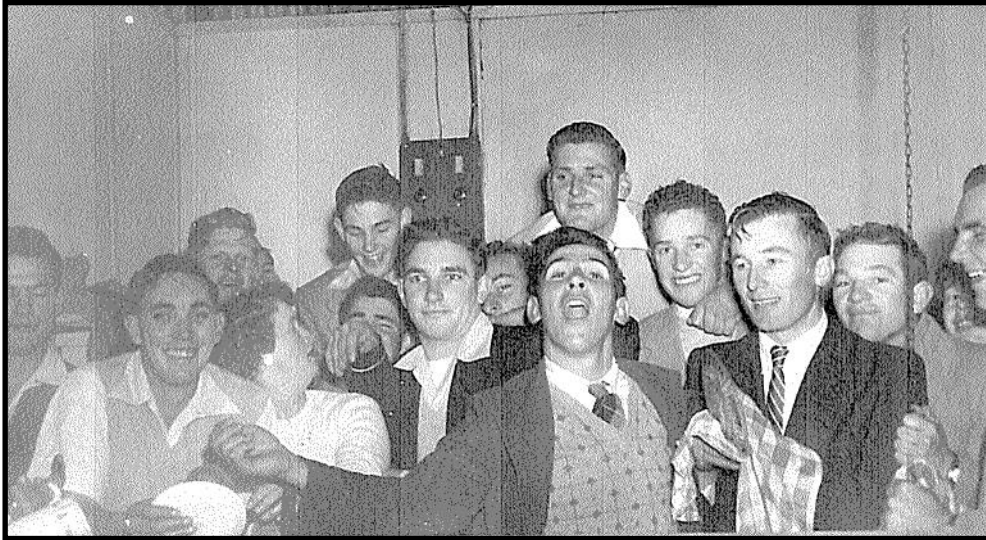
The Monaro Post reports that the Covid-19 rollout is due to commence at the end of this month. In Phase 1a vaccination hubs will be established in locations across NSW. Priority groups will be offered the first vaccines at designated hubs. The Pfizer vaccine will be delivered to 50 hospital sites across Australia and in residential aged care and disability care facilities. Phase 2 will commence in March 21 and it is intended to identify individual general practices capable of participating in Phase 1b of the rollout. We have also heard that Pharmacies can take part if able to do so.



shutterstock • 222653197

No good turn should go unrecognized—Kudos to our local Chemist for personally delivering tablets to a Delegate lady who cannot drive and who was out of tablets which she vitally needed.

LOOKING BACK



The photo of some local men we estimate may have been taken around sixty years ago. We do not know where it was taken, but they were obviously all having a good time. We can recognize two or three, but some of you will probably do better.

The photo below taken in the snow of the General store built by Booth. The owner when the photo was taken was John Betty who is pictured in front of building (circa 1930/40). Katherine Hooper is pictured on the right of the group of ladies on the verandah. The next owner was Alan Hammond. The building is now privately owned.



Community Information

EMERGENCY / AMBULANCE: 000

FIRE: 000

POLICE

Delegate: 6458 8044

Bombala: 6458 3444

Cooma: 6452 0099

Bendoc: 6458 1523

CHURCHES

CATHOLIC

Father Mick McAndrew 02 8331 7609

Sister Teresa Keane: 6458 3045

1st 5th Sundays Mass Delegate Sat
6pm and Bombala Sunday 8am

2nd & 4th Sunday –Liturgy Del.Sat 6pm

Bombala Sun. 9am

3rd Sun. Mass Del. Sun 8am Bom. 10am

Mass Delegate MPS 2nd Wed. 10.30am

Website www.cg.org.au/bombala

Email: joeysdelegate@gmail.com

ANGLICAN

Rev. Judy Holdsworth 04 0853 1544

Rev. John Kuruvilla 0406765443

Services:

11am every Sunday.

DELEGATE MPS 6459 8000

BOMBALA MPS 6458 5777

Community Health Central intake team on 1800 999880

Victorian Visits—Community Nurse visits Victorian Clients every
fortnight. For referral or info ring Orbest Regional Health 03 5154
6666 or

Delegate Community Health Nurse on 6459 8000

Bombala Medical Practice 6458 3022

Healthdirect and GP helpline 1800 022 222

(See advert in paper for detailed information)

MONARO FAMILY SUPPORT SERVICE

Bombala Office: 6458 4888

open Tues to Thurs - 9:00am to 5:00pm

Delegate Pre School: 6458 8196

Delegate Public school: 6458 8183

DELEGATE PROGRESS ASSOCIATION

RTCT Centre - 6458 8388— dpaooffice@bigpond.com

Newspaper: delegateprogress@exemail.com.au

Tubbut Access Centre 6458 0295

NRMA/RACV: John Stewart: 6458 8047

Delegate Progress Association Inc.

66A Bombala Street

DELEGATE NSW 2633

PH 6458 8388 Fax 64588 374

E-mail dpaooffice@bigpond.com

delegateprogress@exemail.com.au

(for paper)

‘Delegate Doings’ Subscription:

\$40.70 by Post

Email \$16.50.

Cash or Cheque payable to

The Delegate Progress Association Inc

Amount \$ _____

Name

Address or email:

The Delegate Doings is published by the Delegate Progress Association. We welcome information about meetings and reports on functions and other activities of local people and organisations, factual historical articles and poetry etc. We do not publish letters to the editor. The publisher accepts no responsibility for any advertisement, or articles. Any advertisement or article is published at the risk of the contributor, who accepts liability for any intended publication. All such contributors agree to indemnify the publisher and warrant that the material is accurate and is neither deceptive or misleading, in breach of copyright, defamatory, or in breach of any other laws and regulations.

ADVERTISING IN THE “DELEGATE DOINGS”

| Spot Ad: | 1 | 6 | 11 |
|----------------------------|----------------|-----------------|-----------------|
| \$5 cash—\$7.50 a/c | Issue | Issues | Issues |
| 1/4 Page | \$17.50 | \$87.50 | \$157.50 |
| 1/2 Page | \$35.00 | \$175.00 | \$315.00 |
| Full Page | \$70.00 | \$350.00 | \$630.00 |
| Back Page | \$80.00 | | |
| Full Page Insert | \$90.00 | | |

Colour advertising: prices on application

The role of seeds and the special case of figs.

By and large plants must remain in the spot where they first put down roots. They have however evolved a huge range of strategies that allow them to travel through time and space and the most successful of these is the seed. The ability to produce seed is important because it also allows a recombination of genes giving each generation the ability to adapt to environmental change through natural selection. Those plants that propagate by vegetative bits such as runners, rhizomes, bulbs or root producing leaves are destined to remain static in evolutionary terms.

Horticulturally it is good to know exactly how each plant species propagate themselves. Plants that can be propagated vegetatively will always give a known result such as the cultivars of succulents or divisions of perennials. The most important instance of maintaining a cultivar is grafting of desirable clones onto easily produced rootstocks with special qualities such as dwarfing or disease resistance as occurs with roses and fruit trees.

Some plants persist as separate male and female individuals e.g. the mountain pepper (*Tasmannia lanceolata*) or holly (*Ilex spp.*) where the desired parts (berries) only develop on the female. Mostly the presence of both sexes is required but, in some cases, fruits will develop without being pollinated (this is parthenocarpy) and these fruits are never as big or juicy nor capable of producing the next generation.

Most plants bear their pollen and ovules on the same plant and mostly within the same flower but there are exceptions such as corn and pumpkin family where male and female flowers are separate. Some plants in this category maintain the ability to recombine genes by ripening the pollen and ovules at different times hence the need to 'cross pollinate' with different compatible varieties.

In most cases of fruit development (tomatoes and zucchini are fruits too) a fertile seed is needed to pump out hormones that make the fruit develop fully. For all our familiar fruit trees 'Shuck fall' is the term used for the stage where fruitlets that cannot complete development because the seed inside is not fertile drop off. Every season the ground beneath is littered with these rejects and one feels that no crop can possibly remain.

Some plants are wind pollinated e.g. hazelnuts and this becomes a hit and miss affair unless plants are carefully sited.

Now we come to the most complex fruit development of all – the fig. Some figs need to be pollinated by a specific wasp that crawls into the inside out fig flower. These are the **capriform figs** that are the source of dried figs with the desired and familiar gritty texture.



The next group is the '**Common Fig**' e.g. White Adriatic, Brown Turkey. These do not need pollinating as the fruit is parthenocarpic and here we depart from normal experience in that these fruits are well developed and juicy unlike the usual results for fruit forming in the absence of fertile seeds. What is interesting is that two crops a year are produced. The first is in early summer from fruits that have overwintered on old wood and then a main crop on new season's growth. Fig varieties vary in reliability and size of the early crop. In the photo a fig is ripe on old wood and the new season figs are still developing on this

season's new wood.

And now to the real conundrum '**The San Pedro Fig**' e.g. 'Adam' or 'Dauphine'. This is an intermediate type where the early season crop is reliable and large and develops on old wood without pollination as in the common fig but the prolific main flowering cannot ripen into fruit unless pollinated. As always nature is endlessly complex.