

July 2016

**1.50 incl.
GST**

Delegate Doings



ISSN 1446-6716

Volume 15, issue 7.

NEW EXHIBITION IN BOTH GALLERIES

Both the Bundian Way and Borderline Galleries were officially opened on Saturday 25th June, with a good crowd turning up for the occasion, despite a very chilly day. Included in those present was Council's Local Representative Committee member for Cooma Craig Mitchell and his wife Anne.

The new exhibitions were opened by former Mayor of Bombala, Bob Stewart, who also accepted an invitation to become the official patron of the Borderline Gallery. Delegate Progress Association President Penny Judge thanked him for his ongoing support since the Gallery's inception and presented him with a certificate in recognition of being our official patron. Penny also presented him with a beautiful painting by local artist Nola White as a token of appreciation for his support of the Delegate Progress Association and the local community.

Karen Cash Council's Economic Development and Tourism Manager spoke of the progress being made on the Bundian Way walk and plans for future development. She also informed the gathering that the \$100,000 grant offered by the former Shire Council would be honoured by the newly formed Snowy Monaro Regional Council.

The Bundian Way Gallery exhibition is entitled "Darago Bulwul Wannigaan" meaning Strong Black Women with a display of beautiful colourful paintings, jewellery and greeting cards. There is also a small display by the Sistass Speak Group from Narooma High School.

The Borderline Gallery had a series of paintings with a theme of "Winter Blues" as well as a display of ironwork, woodwork, pottery, glass and china. Some of the paintings are shown below and on back page



Next Issue: 5th August then: 2nd September and: 7th October

Inside this issue:

Anglican News	3
Seniors trip	4
Campdrafts	6
School news	10
Gardening	12
Here & there	13
Looking Back	14

Dates for your Calendar

- 6th July Delegate Progress Association Meeting
- 8th July—Bendoc Park Bull Sale. See p8
- 6th July to 15th July School Holiday projects—check with Lavender House. See p8

Claim the date

- 15th October Combined church's Trivia Night

Justice of the Peace

Available during **business** hours at

Landmark **Ian Sellers** 64588004
Cafe **Uland Sievert** 64588171
RTC **Sharon Buckman** 64588388

Community grants

The Delegate Progress Association and the Delegate School of Arts were both grateful recipients of Boco Rock Community Grants which were presented at Bom-bala on Monday 27th June.

Bronwyn Wright accepted the grant of \$5,500 on behalf of the School of Arts, which will be used to acquire a mural by well known aboriginal artist Natalie Bateman. The mural will be on the wall of the History Museum and will create a great deal of interest for the many visitors including those on bus tours. The mural will focus on the Bundian Way Pathway, which passes through Delegate and although in it's early stages is generating a great deal of interest.

Sharon Buckman accepted the grant of \$6615.00 on behalf of the Delegate Progress Association which will go towards the purchase of a new Kiln for the Art Centre. The kiln can be used for both firing glass and pottery and will be a replacement for the old kiln. The Art Centre is available for those who wish to pursue various crafts and has been used for glass slumping, pottery, art, felting and mosaic classes.

Both organisations are grateful for the generous donation and extend their thanks to the Boco Rock Community Grant Fund.

FOR SALE

2 Fisher and Paykel "Theme" model four plate electric stoves.

Fan Forced ovens and warming drawers.

Both in excellent condition, \$200 ea.

1 x 3 phase refrigeration compressor motor—motor goes well. With compressor on cradle.

Contact Bill Bateman

0428 431942

ANGLICAN NEWS

A happy gathering of the Cameron family plus godparents, friends and parishioners gathered at St Philip's Anglican Church on Sunday 12th June to baptise Caitlin Alder (daughter of Belinda and Jonathon) and granddaughter of Hazel Rodwell. Following the service a tree planting took place to honour Bessie Cameron—the second in the Memorial Garden.

The children present enjoyed taking part in the planting as many of them will remember their great grandmother who was very much part of their lives as well as being a faithful parishioner in the Parish life of Southern Monaro.

We look forward to working with other families who wish that their relatives be similarly recognised in our Memorial Garden.

Sue Walcott and Jayne Sellers (Churchwardens)

Below: Aspen Cameron, Dylan Blythe, Anna Cameron Lucas Blythe, Pam



Roberts, Hazel Rodwell, Doug Cameron and Rev. Lindbeck.

R: Proud Parents Belinda and Jonathon with Caitlin.



A FIRST BABY FOR TRACY AND SHANE

Congratulations to Tracy and Shane Vilish on the birth of their first daughter Ava Christine, born at Cooma Hospital on the 6th June, 2016, weighing 6lbs. 8 ozs.

Pictured below: Carol Graczol admires the new arrival for the family (Carol is Ava's Great Aunt)

R: Proud parents Tracy and Shane with their first born.



SENIORS BUS TRIP

The annual Seniors outing took place on Tuesday 23rd May, having been postponed on more than one occasion. The Bendoc Bus transported a happy group of Seniors to Eden where they visited the Whale Museum, the recently opened Bundian Way Walk and had lunch at the Eden Services Club. They also called at the Wyndham Store on the way for morning tea, and from reports a great time was had by all.



HAPPY 95TH BIRTHDAY TO OLGA



Mrs Olga Benham recently celebrated her 95th birthday at the Delegate Multi Purpose Service where she is a resident. Her daughter Sue and members of the staff joined her for afternoon tea on this special occasion where she was invited to cut her birthday cake.

L: Olga pictured with daughter Sue and staff members.

Delegate Café

64 Bombala St Delegate

DINE IN - TAKE AWAY

OPEN 7 DAYS

Fruit & Veg - Groceries

DVD Hire - Eftpos

Tel (02) 6458 8171

Pizza available most Friday & Saturday Nights

ELGAS Distributor

Pickup Only (Sorry no Delivery)

DELEGATE HOTEL

Your host: Graeme Payten

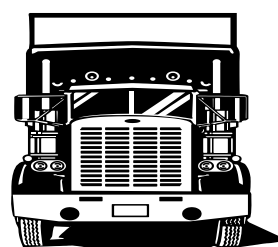
**Accommodation
Counter Lunches**



**Sky Channel & Pub Tab,
ATM and Eftpos**

Ph: 6458 8091

TALBOT TRANSPORT



LIVESTOCK & GENERAL

1 Hensleigh Street, DELEGATE 2633

Mobile: 0418 516 076

Phone: (02) 6458 8085

Fax: (02) 6458 8055

CABANANDRA CAMPDRAFT PRESENTATIONS

The Cabanandra Campdraft Committee held their Annual presentation night to the Community on Friday, 24th June, at the Delegate Hotel. About 22 members and recipients braved the cold weather and enjoyed a lovely meal at the Hotel before the presentations were made. President, Tom Ventry, also thanked Graeme Payten for his support and sponsorship of the Campdraft over many years.

This year donations were made to the following:

Delegate Hospital Auxiliary	\$2000
Snowy Hydro Southcare	\$2000
Delegate Public School P & C	\$1000
Delegate Pony Club	\$1000
Delegate Pre School	\$1000
St. Joseph's S.C.C.	\$1000
DPA History Room	\$1000
Bendoc CFA	\$ 500
Bonang CFA	\$ 500
Tubbut Hall Committee	\$ 500
Bonang Hall Committee	\$ 500
Gelantipy Community	\$ 500

Below: Rhonda Linehan accepts a donation from Tom Ventry on behalf of the Southcare Helicopter.

The Committee and recipients gather for a group photo.



DELEGATE CAMPDRAFT DONATIONS

At the meeting of the Delegate Campdraft held on the 21st June, the following donations were made to the Community:

Delegate Hospital Auxiliary	\$ 1000
Craigie Rural Fire Brigade	\$ 500
DPA History Room	\$ 500
Delegate Pre School	\$ 250
Delegate Public School P. & C.	\$ 250
Delegate Pony Club	\$ 250
St. Joseph's S.C.C.	\$ 250
Delegate Presbyterian Church	\$ 250

The Delegate Campdraft Committee wish to thank the Community for once again supporting their Annual Campdraft. Your generosity is very much appreciated by us all.

LANDMARK

an AWB company

Delegate
Tel: 6458 8004

a.h. - Peter Holt
Mobile 0427101418

Livestock
Merchandise
Insurance - Wool
Finance - Fertilizer

Delegate Hair Boutique



Open
All Day Fridays
Delegate School
of Arts
Call in on the day
or telephone
6458 7240
For an appointment

**PLUS For all
Your Floral
Arrangements**
weddings,
Birthdays,
Anniversaries,
Wreaths and
Private
Functions

**Phone Pam
on 6458 7240**



Australian Cemetery Supplies



- Headstones
- Plaques
- Accessories
- Restoration
- Duplication
- Bronze sculptured statues
- All rural cemetery & memorial works



memorial plaques

We are a third generation owned monumental and memorial cemetery supplier and we understand the difficulty and sometimes overwhelming situation a family face when choosing a memorial for a loved one.

For your convenience we have our cemetery supplies catalogue available online or we can send you one via your request.

Australian Cemetery Supplies

4472 3537

www.australiancemeterysupplies.com.au



CAR CRASHES INTO PUB

Patrons owners of the Imperial Hotel in Bombala received quite a shock on Saturday 24th when a car crashed into the verandah posts of the building. Fortunately the woman driver escaped unhurt, but the Heritage building will have to be assessed for damage. The owners Mr and Mrs Webster are presently in Sydney, while this is being done.

Jake Heffernan

GSE

GET SWITCHED ELECTRICAL

DOMESTIC • RURAL • COMMERCIAL • INDUSTRIAL

Lic No. 276075C

0429 204 168
heff.gse@gmail.com

ABN: 86484386605

DRAMA WORKSHOPS IN SCHOOL OF ARTS

Following on from the workshop in May when the Cross Border Art Group were shown how to work the new lighting rig and received help from Lis Shelley on producing their own plays etc., a practise session and workshop was held on Saturday morning 25th June. The group discussed plans for a production to be held later in the year and had fun practised their acting techniques. *Below L: the Group give Deb Foskey their full attention and R: Deb Foskey and John Bignell practise their moves.*



SCHOOL HOLIDAY PRODUCTIONS

There are lots of activities planned for the school holidays this year, but places are limited and bookings are essential: For information please call the Platypus Country Visitors Information Centre on 64585622.

6th July—Computer Game Challenge @ Bombala CTC

8th July—"Screening the Good Dinosaur" at Bombala Library

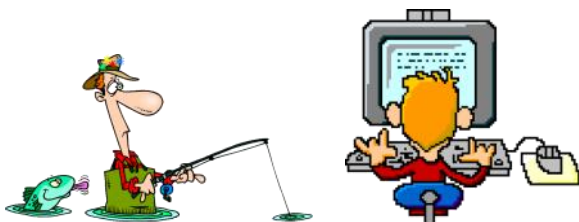
12th July—Fly Fishing Casting Lesson—Meet Bombala Information Centre.

13th July—Computer Game Challenge @ Bombala CTC

14th July—Making Salt Dough Decorations @ the railway buildings.

15th July—SCREENING "ODDBALL" @ Bombala Library.

Some of the activities are free and others have a cost which include lunch.



BENDOC PARK BULL SALE

Gail and Eddie Sellers will be holding their annual bull sale at their property Bendoc Park on 8th July, 2016 at 2pm.

Sale day inspection is available from 12pm and pre sale inspection is also welcome.

Enquiries or to arrange pre-sale prospective buyers may call Eddie on 64581417, Mobile 0417370929. Alternatively phone daughter Lucy on 0408193162.



COUNTERFEIT \$50 NOTES.

Counterfeit notes have been distributed in Cooma and parts of the Snowy Mountains area and police have warned the Community to be careful when accepting cash. They have also warned retailers to be extra careful when accepting payment with \$50 notes and to ensure that they have familiarised themselves with all the security features of Australian Currency.

Delegate Multi Purpose Service

Wellness Clinic is held at the MPS, in Craigie Street Delegate. People come to the clinic for procedures and assessment by nursing staff.

The clinic is open

Mon, Tue, Thur, Fri 1pm to 2pm

Every week except public holidays.

No Appointments necessary.

A variety of procedures are available.

- Wound care
- Blood pressure readings
- Blood sugar readings
- Non-urgent ECG's
- Suture or clip removal
- Injections – with Dr's written order
- Other procedures that do not require a Dr.

Pathology clinic

Wednesday 9.30am – 10.30 am. No appointment necessary. Closed public holidays.

Other Services

Women's Health Nurse

3rd Wed of the month

Dietician and Diabetes Educator

2nd Thur of the month

Immunisations – 4th Fri of the month

Podiatry – for HACC clients – monthly

Ring the MPS for appointments for the dietician, diabetes, immunisation, podiatry and women's health 6459 8000

Child and Family Health – visits Delegate MPS on a regular basis ring Kirsty on 6458 5777 for an appointment.

FORMER COUNCIL RESERVE FUNDS TO BE INVESTED WITHIN COMMUNITY

The Member for Monaro John Barilaro and Snowy Monaro Regional Council Administrator Dean Lynch have re-iterated that any pre-merger council funds in reserve will be re-invested into the community.

Mr Barilaro and Mr Lynch said any reserve funds belonging to the former Bombala Council, Cooma- Monaro Shire Council and the Snowy River Shire Council will stay within the community they originated from.

"This money belongs to the residents of the former council areas, it is therefore only fair that this money remains in their community," said Mr Barilaro.

"Residents have paid rates in good faith; it would be unconscionable to remove these funds from the community.

"I look forward to seeing this money re-invested into vital community infrastructure projects."

Mr Lynch said Snowy Monaro Regional Council will ensure the funds are directed into projects within the former LGA boundaries.

"I'm aware that some in the Bombala community are concerned that this money may be channelled into other areas, however I can assure residents that all unspent pre-merger funds will be invested into projects that your community needs. This policy is the same for other former local government areas."

The Snowy Monaro Regional Council brings together the communities of Bombala, Cooma-Monaro and Snowy River.

Fifteen million dollars will be provided by the NSW Government to the Snowy Monaro Regional Council under the Stronger Communities Fund and can be spent on new infrastructure projects and services across the region.

A further \$5 million will be allocated for the transition process.

DELEGATE SCHOOL NEWS

Well done to Brigid Dunn for her wonderful effort in the Principals' Public Speaking competition last week. Her talk about 'Not Simply Black and White' was considered and contained all the elements. I'm hoping Brigid will deliver her speech at the next assembly. I apologise for the cancellation of last week's assembly due to the unpredictable weather conditions and the consequences. The next Assembly will be Tuesday, 21st June beginning at 2:15pm. Students in Year 1 to 6 still need to return their reports from last year so we can compile the Semester One reports. Student reports will be distributed on Friday, 1st July. Interviews will take place in Weeks 2 and 3 next term. Mrs Bucholtz and I will attend all interviews due to the nature of Numeracy and Literacy groups so we will refer to family appointments. Interview request times are attached, please return as soon as possible. The Life Education Van, Healthy Harold, will be returning to Delegate Public School on Tuesday, 28th June. Information and permission note are attached. Lastly, please don't forget to support the P&C Street Stall this Friday with baked goods or any saleable item. The money raised is used to provide more opportunities for your children.

Carol Sellers, Principal



Classroom News

This week in Stage Two and Three Numeracy Problem solving is an important skill for students to develop. In Numeracy this fortnight students have been learning how to break down word problems, clarify tricky words and phrases, explain their strategies and calculate/solve challenging problems. written problem.

Around the School

Literacy Groups – parent visits During the last fortnight several more parents have visited and experienced our Literacy sessions. It's always great to share and showcase the work that is happening across all the classrooms.



shapes and colour variation in carrots. We have also sown three different sized seeds, lettuce, pea and broad bean, to demonstrate the appropriate techniques required. On looking at the white lettuce seed scattered on black soil in a tray one Yr2 person remarked 'It looks like stars in the sky'. We have produced kiwi fruit this year. Now that we know that the plants will perform under our conditions we will improve the trellis with the aim of gaining significant crops. Kiwi fruits are interesting plants in that male flowers occur on different plants to the female flowers. Asparagus is another plant with this characteristic. We have continued planting 'bulbs' and learning the difference between the various plant organs commonly called bulbs that store food. The children are amazed at how quickly and the extent to which these structures absorb water in order to begin a new cycle of growth. This not only teaches planting techniques but re-enforces that it is the storage of plant foods in various plant tissues that makes the plant useful to us as food e.g onions, carrots and seeds such as peas and wheat.

News from SAKG

Last week we continued to dig in a green manure crop in the potato bed. This is heavy work, particularly after rain, so we have covered the bed with recycled shade cloth to assist in the breaking down of the green material. The holes in the shade cloth allow the soil to breathe and not sour but the fabric deprives the plants underneath of sufficient light so that they die and rot down for us. We are continuing the theme of the effect of selective breeding on common vegetable varieties this time using the



Pruning Matters

Winter is a time when most people carry out their yard tidying. This often involves cutting back unwanted branches or attempting to reduce plants to a desired size. How successful this is depends on the structure of the plant and the manner in which a plant is capable of re-growing and both of these depend on where the plant sits in evolutionary time.

There are two strands of thought in that last sentence – growth structure and evolutionary position.

The simplest interpretation of structure is – Is it a tree, shrub or smaller plant? We all know that it is not possible (with very few exceptions) to contain a naturally large tree to a shrub size and, by contrast, that shrubs are quite amenable to shaping. This is because they have the ability to produce buds (i.e. apical meristems) throughout their framework. In fact, strategic pruning of shrubs rejuvenates them extending their natural life.

The more refined question about structure is – What mechanisms control how a species develops its visible structure? And the answer to this lies in where it has the ability to initiate growth buds within its frame and this pattern of growth is determined by the deep evolutionary history of the group the plant belong to. Take the conifers as an example. Nearly all the natural species are large forest trees. The ancestors of present day species evolved 300million years ago and although small changes have occurred up to the present day the basic template cannot be altered. An easier way to think of the template idea is in reference to large animals - four limbs is the template. This is true of frogs, crocodiles, turtles, whales, dinosaurs, birds, mammals. There is a myriad of limb modifications but there will never be 2 or 6 or 8 limbs as the developmental template is fixed.

So back to conifers. Conifers remain large trees with male and female cones instead of flowers, their pollen is windborne, their roots are shallow and they have a conical shape carrying the foliage to the ground.

Having a conical shape means having the weight close to the ground and this is critical to allowing them to remain standing given the shallow roots. For the plant to maintain this shape there must be strong dominance to tip growth – as the trunk grows taller the branches must continue to grow out to balance it. Conifers therefore have little to no ability to regenerate buds along the interior branches. An example of this that we have all probably seen is the failed attempts to bring an overgrown cypress hedge back into shape – there just isn't any regrowth.

Yet another disaster often seen is the trimming off of the lower branches e.g. so that you can get the ride-on underneath. This is tantamount to giving the plant a death sentence.

A couple of processes are at play. The tree is now top heavy so the wind rocks the trunk continually breaking off the fine roots that collect the water and nutrients for the plant. Simultaneously, soil that was once shaded is now prone to a massive range in temperatures from sun and frost and this is particularly damaging for roots so close to the surface. Conifers will also often die from insect and fungi attack as the pruning wounds give these organisms an easy entry point. This is partly because conifer tissues are slow to regenerate (heal). To illustrate this slow growth pattern the leaves live between 2-40 years and cones containing seeds may remain on the plant for up to 60–80 years in the great majority of species. During its long life an individual needle may contribute 3 cubic cms. wood and ¼ of a new needle so the loss of branches by pruning is a major loss of accumulated photosynthate. On the other hand the template of conifer growth has stood them in good stead during the changes that have occurred to the Earth's climate over the millennia. When the Earth turned cold possessing shallow roots allowed them to exploit the seasonal thawing of a little soil above the impenetrable permafrost. Their ability to shut down during the frozen winter period when no water could be got from the soil allows them today to be drought hardy in hot climes.

So far in discussion I have been referring to natural conifer species but we cannot forget the extensive breeding of dwarf cultivars by nurserymen with a multitude of dwarf, mounding and groundcover shapes. But their heritage remains true – you cannot cut into even these for all the above reasons.

Now the flowering plants appeared only about 140-130 million years ago when soil and atmospheric conditions on earth were very different. They are more efficient in capturing carbon, their root systems are more diverse. In general, they are capable of producing growth from the axil of every leaf and this makes their cultivation by us much more flexible. Flowering plants are naturally more diverse in form and function and this leads us into an equally diverse scenario of pruning needs and techniques.



HERE & THERE

Many Happy returns for those whose birthdays fall in July including, Robyn Mikula, Josh Stuart, Su King, Bradley Matthews, Kaye Reed.



The district were shocked to hear of a tragic accident on the Monaro Highway recently which took the lives of two Delegate brothers, Wally and Laurie Armstrong. Their funeral took place on Monday 27th June at a graveside service in the Delegate Cemetery. Laurie is survived by two children Mandy and Greg and their families while Wally is survived by three children, Vic., Linda and Brett and families. One brother Norman and one sister Dot are the surviving members of the Armstrong family. Sympathy is extended to all.

For Art lovers there are new exhibitions in both the Bundian Way and Borderline Galleries. The Borderline theme is "Winter Blues."

Also there will be an exhibition by Di Klima at the Raglan Gallery opening 2nd. July (Polling Day) until 24th July



Another head on collision between two motor vehicles took place at Big Flat Road, Craigie near the Lower Bendoc Road. Both vehicles were a write off but fortunately no-one was hurt. Apparently the primary cause was a fallen tree across the road.

Congratulations to Sharon and Russel Buckman who celebrated their 30th Wedding Anniversary on Saturday. To mark the occasion, they had dinner at the Country Club and spoke highly of the meal provided by the new caterer Sophie.

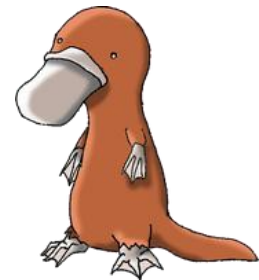


The School of Arts and the Delegate Progress Association were pleased to receive grants from the Boco Rock Wind Farm. Sharon Buckman and Bronwyn Wright attended the presentation ceremony at the Council Chambers Bombala on Monday 27th June. The money received by the Progress Association will go towards purchasing a new kiln for the Art Centre. The School

of Arts have commissioned artist Natalie Bateman to do a Mural on the wall of the Museum.

The Progress Association will be building a new web page, the present one now being outdated as it features the Men from Snowy River commemorations. The new page will feature different features of Delegate and surrounds. If any business or other organisation is interested in being included, please let us know.

Bombala will still be featuring "Platypus Country" in their tourism advertisements, so I'm sure our local platypus will be relieved to know that they do not need to become Snow Bunnies after all.



Apparently a good start to the Snow Season with lots of the white stuff falling. No snow here yet, but we are certainly feeling the cold winds coming off the mountains.



LOOKING BACK



Back in the days when tennis was big in the district, matches were played between the various Clubs. This appears to be taken at a match between a Delegate team and a Bendoc team. Circa 1950's?



This photo was taken at the opening of the RSL Hall in 1940.

The Hall has had a facelift in recent times with a new fence, a coat of paint and other improvements.

Community Information

EMERGENCY / AMBULANCE: 000

FIRE: 000

POLICE

Delegate: 6458 8044

Bombala : 64583444

Cooma: 6452 0099

Bendoc: 6458 1523

HOSPITAL: 6459 8000

DOCTOR: 64951369

CHURCHES

Catholic: Father Mick McAndrew 64522062

Sister Teresa Keane: 6458 3045

Services: Delegate Saturday 6:00pm

Liturgy of the word and Holy Communion

Bombala Sunday 9:00am

Liturgy of the word and Holy Communion

Anglican: Rev. Robert Lindeck 6241557 Mob.

0408531544

Rev Judy Holdsworth—64583513

Services: 11am every Sunday..

COMMUNITY HEALTH (3 days per week)

Generalist Community Nurse –Monday, Thursday, Friday

Wellness Clinic—Monday , Tuesday, Thursday and Friday 1pm to 2pm

Pathology—Wednesdays 0930-1-3- hours

Immunisation Clinic—Fourth Thursday from 1100hours.

Podiatry Clinic

Victorian Visits Tuesdays

Call MPS 64598000

Healthdirect and GP helpline 1800022222

MONARO FAMILY SUPPORT SERVICE

Bombala Office: 6458 4888

open Tues to Thurs - 9:00am to 5:00pm

COUNCIL CHAMBERS: 6458 3555

DELEGATE PRE-SCHOOL: 6458 8196

DELEGATE PUBLIC SCHOOL: 6458 8183

DELEGATE PROGRESS ASSOCIATION

RTCT Centre - 6458 8388— dpaoffice@bigpond.com

Newspaper: delegateprogress@exemail.com.au

NRMA/RACV: Jack Stewart: 64588047

TUBBUT ACCESS CENTRE: 6458 0295

DELEGATE CARAVAN PARK: 64584047

Delegate Progress Association Inc.

66A Bombala Street

DELEGATE NSW 2633

PH 6458 8388 Fax 64588 374

E-mail dpaoffice@bigpond.com

delegateprogress@exemail.com.au

(for paper)

‘Delegate Doings’ Subscription:

\$38.60 by Post

Email \$16.50.

Cash or Cheque payable to

The Delegate Progress Association Inc

Amount \$ _____

Name

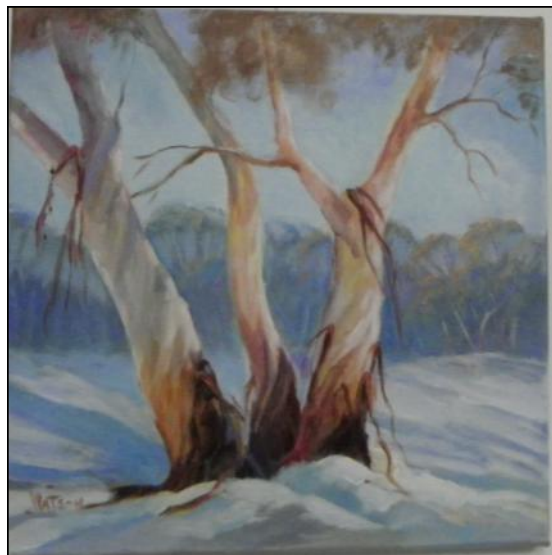
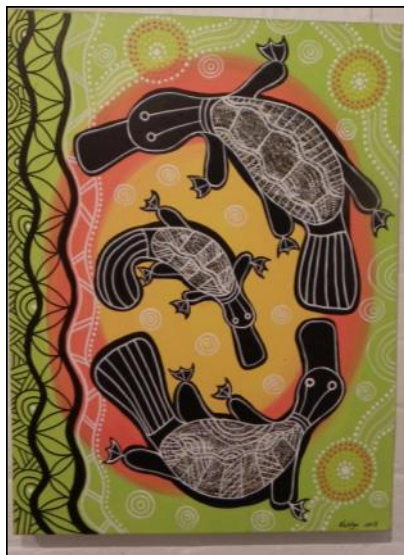
Address or email:

The Delegate Doings is published by the Delegate Progress Association. We welcome information about meetings and reports on functions and other activities of local people and organisations, factual historical articles and poetry etc. We do not publish letters to the editor. The publisher accepts no responsibility for any advertisement, or articles. Any advertisement or article is published at the risk of the contributor, who accepts liability for any intended publication. All such contributors agree to indemnify the publisher and warrant that the material is accurate and is neither deceptive or misleading, in breach of copyright, defamatory, or in breach of any other laws and regulations.

ADVERTISING IN THE “DELEGATE DOINGS”

Spot Ad:	1	6	11
\$5 cash—\$7.50 a/c	Issue	Issues	Issues
1/4 Page	\$17.50	\$87.50	\$157.50
1/2 Page	\$35.00	\$175.00	\$315.00
Full Page	\$70.00	\$350.00	\$630.00
Back Page	\$80.00		
Full Page Insert	\$90.00		

Colour advertising: prices on application



ST JOSEPH'S DELEGATE NEWS

We were sorry to hear of the recent death in Sydney of Sr Dominica Bampton. Sr Dominica was the last principal of St Joseph's School when it closed in 1981. After leaving Delegate she also taught at Bombala, Walgett and Lightning Ridge. Whilst unable to attend our celebrations last November she was thrilled to receive the first copy of our history booklet written for the event. Sympathy is extended to her family and the Josephite Sisters.

In conjunction with St Andrews and St Philips Churches, we will be holding our regular trivia night format at the Delegate Country Club on Saturday night 15th October. The theme this year will be "Music, Music, Music". A great night is assured.

On Sunday 16th October we will hold a special Mass "A Century of Celebrating Mass" to mark 100 years since the first Mass was held in the current church in 1916. A light luncheon will follow in the school building.

An outdoor "Carols on the Church" is being organised for the Sunday 18th December. More on this closer to the date.