

June 2021

**1.50 incl.
GST**

Delegate Doings

**Delegate Progress
Association**



ISSN 1446-6716

Volume 20, issue 6.

NAROOMA CAMERA CLUB VISITS DELEGATE

The Narooma Camera Club makes a regular visit to Delegate to take photos of our lovely area.

This years visit coincided with all the snow. Most of the Narooma people had never been to the snow before so they all took a lot of lovely snow photos at Bonang.

While here they took photos of the Settlers Hut, the Delegate River, Alan Lindsey's shearing shed, the Big Rock at night with the Milky Way behind it and numerous points around town.

They also helped the local economy by having dinner out at the Café and the Tavern. A very enjoyable weekend was had by all who attended.



Next Issue: 2nd July

then: 6th August

and: 3rd September

Inside this issue:

St Josephs Convent	4
90th Birthday	6
Country Club News	8
School news	10
Bendoc Playground	12
Here & There	13
Looking Back	14

Dates for your Calendar

- 10th June—DPA meeting 5.30pm
- 17th June - RFS AGM 7pm
- 8th July—Monaro Aged Crime prevention @ School of Arts 11am
- 8th July—DPA meeting 5.30pm

Save The Date

- 30th/31st October Heritage Festival



Hardware Repairs / Software Repairs
Networking
Computer Upgrades
Virus Removal

Assistance with all computer problems
Windows, Linux/Unix, Apple

Phil Pope
0417 453 545
glenoracs@gmail.com
20 Corrowong Rd. Delegate NSW

**Delegate Rural Fire Brigade
AGM
17th June 7pm
At the Delegate Fire Brigade
shed
All Welcome**

The Biggest Morning Tea

Hosted by the residents & staff at the Delegate MPS raised an amazing \$500 for the Cancer Council. 290 tickets were purchased in the Tea Party Basket Raffle which was won by Suzy Kidd. Brett Hunt won the Lucky Door Prize. Thank you to all who supported the event. The Delegate community may be small but it has a big heart & a generous spirit.



Cloudride 2021 Passes Through Delegate

Ken Taylor

Cloudride <https://bikepacking.com/event/monaro-cloudride-2021/> is an extraordinary difficult long distance (1000 km) bicycle event that starts and finishes in Canberra. *After a good night's recovery sleep, Jason English right greets third placed finisher Tom Moschitz, left as he arrives back in Canberra nearly 24 hours after Jason*

The most riders in town at any one time were three. Terry Tompkin left, Karen Foat centre and Natalie Anderson right.



Tubbut is half way and this year the route was clockwise so riders arrived in Delegate after traversing 460 km from Canberra via mainly small tracks as compared to a casual 240 km by a direct road route. Riders pass through in small numbers and by watching progress on the live map <https://cloudride1000.mapprogress.com/> you can know when to meet them at the Delegate Cafe where all that arrive in daylight hours will be sure to stop.

The Snowy River was high this year which made it the most difficult river crossing on the route and some riders were helped across by Steve and his family (*a local property owner*) who provided canoe transport, snacks and support. Others waded across and some of those were fully immersed. This year, for the first time, there was an unofficial entrant, Russell Wilson, riding an electric bike and he scored a canoe ride to protect his electrics.

The fastest rider was Jason English who finished the ride in 3 days 12 hours and 4 minutes with very little sleep, having been moving for all but a little under 12 hours.

MOTHERS DAY HIGH TEA

A good crowd enjoyed the High Tea at the Tavern on Mother's Day, with a very nice array of sweet and savoury treats on offer. With many venues, not opening on Sundays, it provided a welcome outing for the Mums of the district.



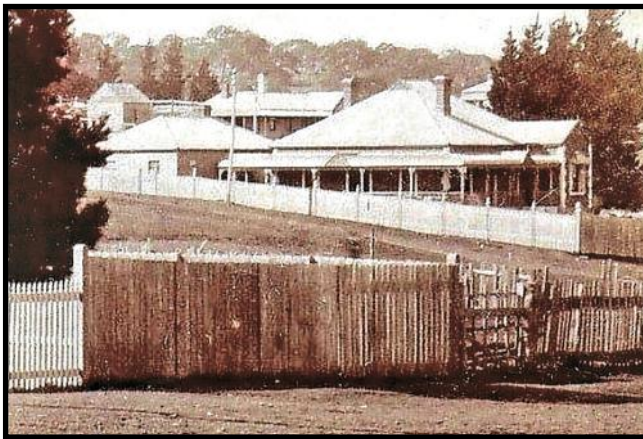
St. JOSEPH'S CONVENT.

St Joseph's Convent School Delegate was founded & opened by the Sisters of St Joseph on 16th January 1921. Sadly, it closed in 1981 and 2021 marks the centenary of the opening .

The first convent was built in Craigie Street in 1921. The Delegate Multi Purpose Service is now on this site. The second convent was purchased in 1927 from Dr. Schalit. It was the Doctor's residence and he had built a small building at the rear which was used as a Nursing Centre with the local mid-wives attending births there. The building is now owned by Robert Ingram. Organisers hope to hold a commemorative centenary with a special Centenary Mass, prayers at the cemetery, luncheon in the school building. They are seeking feedback from ex-students, families, parishioners or anyone associated with St Joseph's School or Church who would be interesting in attending/helping if we went ahead. At this stage we are looking at either October or November of this year.

Please contact Sandra Walker on 02 6458 8089 or email joeysdelegate@gmail.com

Below: An early photo of the second convent. R: Pupils and priest, circa 1950s.



BOMBALA'S LAVENDER GARDEN

The Monaro Country Lavender group recently received a grant from Boco Rock to revamp and expand the lavender plantings on the Bombala Railway Land. They have already begun planting , establishing the only lavender specimen garden in South East NSW, showcasing lavenders suitable for this region. Three of the members also attended the Australian Lavender Growers Association conference. If you are interested in growing lavender and joining Monaro Country Lavender, please call Jan on 0478 609 584 or Karen 64585 289.



Delegate Café

64 Bombala St Delegate

DINE IN - TAKE AWAY

OPEN 7 DAYS

Fruit & Veg - Groceries

DVD Hire - Eftpos

Tel (02) 6458 8171

Pizza available most Friday & Saturday Nights

New Trading Hours for

Sundays 9.30am to 2pm

DELEGATE HOTEL

Your host: Paul Herringe

**Accommodation
Counter Lunches**

**Spin to win every Friday
night.**

Pick of the table and cash

**Sky Channel & Pub Tab,
ATM and Eftpos**

Ph: 6458 8091

TALBOT TRANSPORT



LIVESTOCK & GENERAL

1 Hensleigh Street, DELEGATE 2633

Mobile: 0418 516 076

Phone: (02) 6458 8085

Fax: (02) 6458 8055

Happy 90th Lorna



Lorna Thornton was born in Delegate on May 4th 1931 at Granny Stone's Nursing Home. She lived most of her early life in Corrowong. She married Jack Thornton in 1953 and lived in Victoria Parade Delegate from 1953 to 1960. She then moved to Lidcombe in Sydney with her family. She has strong memories of Delegate and the district, having worked as a nurse at Delegate Hospital. She often talks about the freezing weather, frosts where the water pipes would burst, the big snowfalls and the dances she attended around the district in her free time.

Lorna and Jack had three sons, Brian (Stanmore), Peter (Thirlmere) and Mark (Tumut). She celebrated her birthday over two days at the Abbotsford Sailing Club and Carnarvon Golf Club with her extended family.

She is pictured with her sisters, Nola Bedingfield (Bombala) and Marjorie Anderson (Lidcombe). She is still an avid subscriber and reader of the Delegate Doings.

Medlar Jam

There is a Medlar Tree at Bill Jeffreys Park near the new kitchen.

The common medlar belongs to the Rosaceae family, the same that includes apples and pears, and just as these two it is related to the autumn. It has a unique and special taste, and like everything unique, not everyone loves it. The strangest characteristic of this plant is that the fruit can not be eaten freshly picked, but it should be left to rest a few weeks in the cellar, so that they *blet* and are really ready. In ancient times, in the Middle Ages and during the Renaissance, the medlar was widely used, popular and appreciated, but with time it fell into disuse.

Ingredients

- 1.5kg medlar well bletted
- sugar
- 2 lemons

Instructions

1. To begin preparing the jam, it is necessary first of all that the fruits are fully bletted and soft. Put them into a whole saucepan and 3/4 cover with cold water, without depriving neither seed nor peel. Cut lemons in quarters and add. Simmer for 10 min. Then, using a potato masher or a meat mallet, smash the fruits, mixing them well with water.
2. Simmer another 20 minutes, so that the pulp comes off completely from the seeds and peel. This step is important, and will avoid having to strip the flesh off one by one by hand.
3. Once this has been done, pour the puree into a large colander, under which you have previously placed a container to collect the pulp. And now, you just have to mix thoroughly a few minutes and all the pulp will separate! Not bad, to save time and effort!
4. Weigh the pulp you got, put it back on the heat and add half the weight in sugar.
5. Cook for half an hour and pour into jars.





Delegate
Tel: 6458 8004

Livestock— Tony Brady,
Sam Platts
Agronomy— Hugh Platts
0488281253
Merchandise
Insurance - Wool
Finance - Fertilizer

Delegate Hair Boutique



Open
All Day Fridays
Delegate School
of Arts
Call in on the day
or telephone
0427587240
For an appointment

PLUS For all
Your Floral
Arrangements
weddings,
Birthdays,
Anniversaries,
Wreaths and
Private
Functions
Phone Pam
on 6458 4346
Mob: 0427587240



COSTAS FROM ABC GARDENING VISITS BOMBALA PRESCHOOL

Almost 100 people turned up to enjoy the “in conversation with Costas and Friends” event for a most enjoyable experience. A beautiful autumn day, generous catering and lots of gardening knowledge imparted by Costas made the day very worthwhile. The pre-school has had a complete overhaul recently with a permaculture garden project and many new additions to delight pre-schoolers.

Below: Con Costas who is a very familiar face to those who watch Gardening Australia



HERITAGE WEEK-END

At their recent meeting, the Delegate Progress Association voted to hold the annual Heritage week-end in October, which had to be cancelled last year due to Covid. The Sports day will be held as usual, and there are plans for a Bundian Way walk on Sunday. As this year is also the 150th. Anniversary of public education in Delegate, the school has been contacted to see if they wish to join in.

Also Delegate was proclaimed a village one hundred and thirty six years ago, but as we couldn't recognize it last year, it is only fitting that we mark this important event on the heritage week-end

It was also 150 years ago in 1871 that the that the NSW/Victorian border was proclaimed, but of course not officially signed off until 2006.

So lots of important events to celebrate.

Delegate Country Club News

The Club is taking expressions of interest from those who would like to complete their Responsible Service of Alcohol course. We are looking at holding the course in late July. Be in touch with the Club if you are interested. 02 6458 8169

National Volunteers Week was during May. The Club would like to send out a big "THANK YOU!" to all those that lend their time and skills to the Country Club. We have a strong community of people dedicated to keeping the Club doors open. If you are looking for a way to become involved, you might be willing to jump on board as a volunteer on our bar roster. The Club will cover the cost of your RSA if you can commit to a few hours on a Sunday once a month or every few months (pending approval of the individual by the Board).

There are also vacant spots on our courtesy bus roster. You just need a normal Class C license and a few hours of a Friday evening every few months. Please be in touch if you can help out!

Many hands make light work, and we're ready to welcome some new people!

June is the last month you can use your Dine and Discover vouchers. Individuals can apply for two vouchers each with Service NSW. Reach out to the Club if you need assistance with applying.

We're excited to have two new junior staff join our team - Charlie and Gabby! As Friday dinners have become busier, the girls have been helping out in the kitchen. We're happy to be able to offer the young people of Delegate the experience of a casual job. Welcome Charlie and Gabby!

The golf course has players regularly attending on a Sunday and is looking lovely, with all the extra rain and having been sown. Ladies represented Delegate in the Bombala golf tournament in May in some pretty extreme conditions! Pictured are Pat Campbell and Karen Morrissey playing in the snow!



Delegate Multi Purpose Service
Craigie St, Delegate 6459 8000

Wellness Clinic

Monday 9am-10am

Every week except Public Holidays

No Appointments necessary.

A clinic where well people come for health monitoring and a variety of nursing procedures such as:

- Wound care
- Blood pressure readings
- Blood sugar readings
- Suture or clip removal
- Injections with Doctors written order
- Other procedures that do not require a Doctor

Pathology clinic (conducted by Pathology West)

Wednesday 9.30am – 10.30 am.

No appointment necessary.

Every week except public holidays.

Women's Health Clinic

4th Thursday of the Month

Phone 1800999880 for appointments

Other Community Health Services

- Dietician
- Diabetes Educator
- Immunisations
- Podiatry
- Child and Family Health Nurse
- Generalist Community Health Nurse

To refer to any of the above please ring Community Health Central Intake team on 1800999880

Victorian Visits

Community Nurse visits Victorian Clients every fortnight. For referral or info ring Orbest Regional Health 03 5154 6666 or Delegate Community Health Nurse on 6459 8000

OLD DELEGATE POST OFFICE

Home of the

Healing Hub and Creative

Hub

And Retailing

Homewares

Gourmet Foods

Handcrafted Gifts & Toys

Thursday to Saturday

10am to 4pm

40 Bombala St Delegate

02 64585289

Thursday afternoon Creative

Hub Workshops

12.30 to 2.30pm

Small charge for materials

Serendipitous Markets last

Saturday of the month.

Barista Coffee, Hot chocolate and Tea
now available at the old post office.



DELEGATE SCHOOL NEWS

Rugby League

Last Monday we welcomed Kezie Apps to our school. Kezie is a member of the NRL Dragons Women's Rugby League team and is often touted as the best female rugby league player in the world. Just yesterday, Kezie was named captain of the NSW Blues Women's State of Origin team. During her visit, Kezie introduced our students to the Best You Can Be program that enhances a student's ability to show resilience in difficult situations as well as striving to be the best version of themselves they can be. After the theoretical side of things, students were put through their paces on the field learning a range of skills that not only support their specific rugby league skills but also their overall gross motor skills. It was an awesome day and we can't wait to welcome Kezie back on her next visit.

Regional Athletics carnival

On Thursday this week we have ten students representing the Djamaalan PSSA at the Snowy Mountains PSSA Athletics Carnival in Cooma. A massive congratulations to Cooper, Kadence, Isabella, Lola, Mason, Layla, Fred, Wyatt, Amelia and Georgie. The bus leaves school tomorrow morning at

7:00am sharp. We wish the students the best of luck in their re-spective events.

Swimming Lessons

Swimming continued on Monday with Years 3, 4 and 6 heading off to Pambula. In such a short period of time we have already seen so much improvement in the skills and confidence of the children in the pool.



Option determined for rates harmonisation across Snowy Monaro

The recommended option for rates harmonisation across the Snowy Monaro region has been determined following a second Extraordinary Council Meeting held in Cooma.

A single motion was presented at last night's meeting, in support of Option 2 (a simplified rates structure), which will lead to the same base rate and ad valorem rate applying to most properties across the region. There was no opposition to the motion, however a number of Councillors sought final clarification of the impacts to confirm their understanding.

Additional information provided on the impacts of the changes, that will result from the new rate structure options, led to Councillors agreeing they had sufficient understanding of the implications of the options presented to them and that the implementation of a clear and simple rating structure would benefit the community most into the future.

This resolution means Council will meet the legislative deadline for rates harmonisation and public exhibition of the rates structure.

It was resolved that there will only be one subcategory, in the Business category, which is for the centre of activity being electricity generation. All other landowners across the entire region will fall under either the business, farmland or residential categories.

A base rate will be applied to comply with the requirement for only 50% of the rates levied to come from this base rate. The ad valorem (cents in the dollar) rate will then be calculated to raise the maximum permissible yield available to the Council. These changes will not lead to Council receiving any more rates revenue overall.

It was also recognised by Council that the community strongly values the principle that those who benefit are contributing to the services they benefit from. Following each election, the Council will review whether the rate structure aligns with where community benefits are provided.

The revenue policy, which contains the rate structure, is now on exhibition to the public on the YourSay Snowy Monaro website.

<https://yoursaysnowymonaro.com.au/revenue-policy-exhibition>

Links are being loaded to the council website and social media today. Hard copies will be provided for community review at all council offices and libraries. A rate calculator will be on the YourSay website so residents can assess their level of impact.

The exhibition period will close on Thursday 24 June 2021.



Bendoc Community Hall Playground Upgrade

The Bendoc Community Hall would like to thank the East Gippsland Shire for making the up-grade to the Bendoc playground possible. A special thanks goes to both Steven Faull, Peter Balmer who genuinely listened to the wishes of the Bendoc community and delivered this project efficiently and smoothly. This upgrade improves the quality of the facilities that the Bendoc Community Hall can offer to locals and visitors alike and we are pleased with how it has turned out. The Bendoc Community Hall had planned to organise a community event as an official opening of the playground, however COVID has wreaked havoc on these plans. We still intend to Official opening when restrictions ease and we will keep you posted on this event.



HERE & THERE

Many Happy Returns to all birthday people in June, including

Joan Jones, Craig Lewis, Lakeisha Clear, Tayla Mikula, Evelyn Walker, Sandra O'Hagan, Carol Graczol, Wendy Bruce, Trish Guthrie, Phil Pope, Norman Armstrong, Barry Reed, Nell Southam

HAPPY 100th BIRTHDAY

To Olga Benham who will celebrate her birthday this month.

Olga who is a resident at the MPS. will no doubt receive a letter from the Queen on her special day.



The death occurred at the Delegate MPS of long time resident, Shirley Baker. Her burial took place in the Delegate cemetery on the 14th May, following a service at St. Joseph's Church. Shirley is survived by her husband Coopy and three children, Cathy, Danny and Anthony and sympathy is extended to all.

The death occurred in Canberra Hospital, on the 12th May, of Richard Nocny following a fall at his home at Tombong. Richard was taken by ambulance to Canberra Hospital, but did not regain consciousness. He is survived by his wife Helen, three daughters, brother and grandchildren.

Sr Bede Hinzt (Frances Teresa) passed away recently in Sydney at the age of 90 years. Sr Bede taught at St Joseph's Convent School in Delegate from 1969 to 1975. Sr Bede was very active during her time in Delegate with the Parents and Friends Association for the school, gave great support for children's Saturday morning tennis at the convent courts and was a driving force for the Delegate and Border District School Sports. It was during her time here that the convent moved from the brick building below the church into what was the presbytery, adjacent to the church. It was a fitting tribute on behalf of St Joseph's Convent School Delegate that Leanne Clear & Greg Crotty, two of her students, were able to attend her funeral Mass in Sydney.

An earthquake which struck near Crackenbach on 5th May, was felt by many in the Delegate area. However those closer to the centre, reported cracks forming in ceilings and balconies. Others at Berridale felt a loud noise as the earthquake struck. GeoScience Australia said that the earthquake was 4kms deep and was felt as far away as South Australia and Sydney.

**Campaigns
& Elections**

With local Council elections coming up this year Cr Sue Haslingden is encouraging women to put their hands up to join Council and get involved in local Government for the good of their community. Sue said that having women on the Council adds a

very important dimension to decision making. It would be great to see somebody from this area nominate. You can register through the NSWEC website, following the "six steps to being a candidate" link. There is a relevant application form on the website which can be submitted to the NSW Electoral Commission by email, mail or fax. Nominations close on August 4th.

A lady from Canberra, who loves this area and visits frequently phoned us to say that while on a visit to Delegate Hill recently, they discovered that a seat with a plaque dedicated to Michelle Farran has either been broken or vandalized. The seat was erected by Michelle's husband Matthew, who has now moved from the area. Friends of the family are going to check.

In sporting news the Blue Heelers are having a successful season, and there is a popular mixed teams League competition for local kids in Bombala. Also a former Cooma Stallions player Zac Saddler has made the big time, recently making his debut in the NRL for Manly.



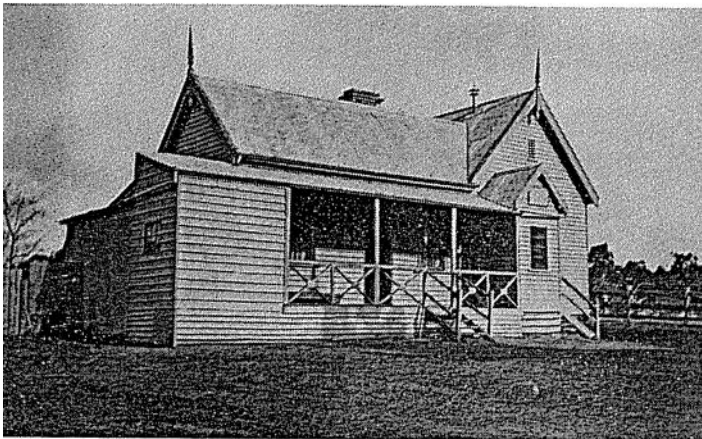
Visitors are gradually returning to the area, including bike riders and bush walkers and we are increasingly fielding enquiries for accommodation.

LOOKING BACK

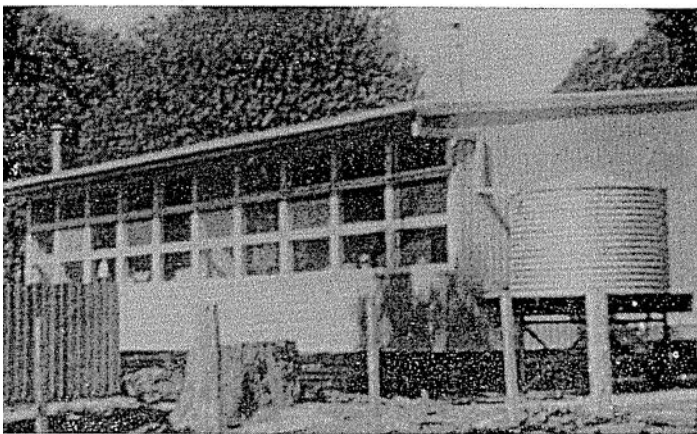


Tom Malin's Coach ready to leave Orbost for Bendoc—1926.

THE OLD AND THE NEW



Bendoc School — 1873



Bendoc School — 1962

The History Group have been gathering local history, and already have quite a lot on Bendoc's early history. Left is a photo of the early school and one taken in 1962. There is no longer a school at Bendoc and the children travel by bus to Delegate Primary School or Bombala High.

If anyone has any photos of early Bendoc, we would love to see them. We can scan them and keep them in our files.

The top photo of Tom Malin's mail coach taken in 1926, which carried mail and passengers from Orbost to Bendoc. The Malin family also had a guest house and tea rooms at Goongerah, where travelers could stop for accommodation or refreshments.

Later a mail truck which ran three days per week, carried passengers and cream cans to the butter factory in Orbost, as well as the all important mail.

Community Information

EMERGENCY / AMBULANCE: 000

FIRE: 000

POLICE

Delegate: 6450 3360

Bombala: 6458 3444

Cooma: 6452 0099

Bendoc: 6458 1523

CHURCHES

CATHOLIC

Father Mick McAndrew 02 8331 7609

Sister Teresa Keane: 6458 3045

1st 5th Sundays Mass Delegate Sat
5pm and Bombala Sunday 8am

2nd & 4th Sunday –Liturgy Del.Sat 6pm

Bombala Sun. 9am

3rd Sun. Mass Del. Sun 8am Bom. 10am

Mass Delegate MPS 2nd Wed. 10.30am

Website www.cg.org.au/bombala

Email: joeysdelegate@gmail.com

ANGLICAN

Rev. Judy Holdsworth 04 0853 1544

Rev. John Kuruvilla 0406765443

Services: 11am every Sunday.

DELEGATE MPS 6459 8000

BOMBALA MPS 6458 5777

Community Health Central intake team on 1800 999880

Victorian Visits—Community Nurse visits Victorian Clients every fortnight. For referral or info ring Orbest Regional Health 03 5154 6666 or

Delegate Community Health Nurse on 6459 8000

Bombala Medical Practice 6458 3022

Healthdirect and GP helpline 1800 022 222

(See advert in paper for detailed information)

MONARO FAMILY SUPPORT SERVICE

Bombala Office: 6458 4888

open Tues to Thurs - 9:00am to 5:00pm

Delegate Pre School: 6458 8196

Delegate Public school: 6458 8183

DELEGATE PROGRESS ASSOCIATION

RTCT Centre - 6458 8388— dpaooffice@bigpond.com

Newspaper: delegateprogress@exemail.com.au

Tubbut Access Centre 6458 0295

NRMA/RACV: John Stewart: 6458 8047

DELEGATE CARAVAN PARK: 0447151228

Delegate Progress Association Inc.

66A Bombala Street

DELEGATE NSW 2633

PH 6458 8388 Fax 64588 374

E-mail dpaooffice@bigpond.com

delegateprogress@exemail.com.au

(for paper)

‘Delegate Doings’ Subscription:

\$40.70 by Post

Email \$16.50.

Cash or Cheque payable to
The Delegate Progress Association Inc

Amount \$ _____

Name

Address or email:

The Delegate Doings is published by the Delegate Progress Association. We welcome information about meetings and reports on functions and other activities of local people and organisations, factual historical articles and poetry etc. We do not publish letters to the editor. The publisher accepts no responsibility for any advertisement, or articles. Any advertisement or article is published at the risk of the contributor, who accepts liability for any intended publication. All such contributors agree to indemnify the publisher and warrant that the material is accurate and is neither deceptive or misleading, in breach of copyright, defamatory, or in breach of any other laws and regulations.

ADVERTISING IN THE “DELEGATE DOINGS”

Spot Ad:	1	6	11
\$5 cash—\$7.50 a/c	Issue	Issues	Issues
1/4 Page	\$17.50	\$87.50	\$157.50
1/2 Page	\$35.00	\$175.00	\$315.00
Full Page	\$70.00	\$350.00	\$630.00
Back Page	\$80.00		
Full Page Insert	\$90.00		

Colour advertising: prices on application

Nature's Gardeners and Winter Pot Care

Perhaps you have noticed cockatoos feeding on the verges in Delegate recently and may even have wondered what they are eating. Well, it is Onion-weed (*Romulea rosea*), that was introduced from South Africa is now a serious weed of lawns and pastures. The plant is a successful coloniser because it has several strategies to reproduce and some properties that allow it to resist mechanical and chemical removal. The density can reach 5000 plants per square metre and obviously at this level there is little opportunity for other plants to persist as the corms become 'wall to wall' in the soil.

The ability to produce copious seed is the primary colonising property allowing it to spread. Once established it produces an underground storage organ (corm) that gives the ability to survive adverse conditions. This feature also makes the plant difficult to remove because the foliage separates from the corm that remains behind to



resprout. To cap it off the narrow leaves are shiny and waxy which repels herbicide.

Left A handful with corms of various ages.

Several years ago (and reported previously in Delegate Doings Garden Page) a flock of cockatoos and galahs cleared the stock route of the decades old serious infestation of onion weed. It was so completely done that, now, they have to resort to more exposed sites in town to get a feed. Dr. Gregory Moore (University of Melbourne) observed that cockies took only six seconds to remove a plant and eat the corm and each generally took 200 plants out in a feeding session. The corms provide maximum nutrition to the bird when taken before flowering and this also has the effect of preventing a year's addition of seed to the seedbank. The shallow cultivation of the soil in lawns is equivalent to the practice of dethatching and aerating the turf recommended to improve the lawn. The reason that parrots choose to feed on the seeds of apple and pears when they are close to ripe is to access peak nutrition which is a major frustration to orchardists but recently cockatoos have been encouraged by 'switched-on' pastoralists to clean up paddocks.

Plants in Pots In winter we tend to be nurturing our favourite plants in pots. I do think that one of the trickiest of garden skills is to successfully grow plants in pots because the growing environment for a potted plant is actually one of the harshest and most variable that a plant can face. This statement might come as a bit of a surprise since we routinely choose to put delicate or precious plants in pots in an effort to overcome the challenge of garden conditions.

The roots of plants in pots must contend with daily temperature variations far greater than that of soil in the garden as well as a greater fluctuation in water supply. Small pots in particular lose heat rapidly on frosty nights which leads to root death. Keeping the roots warm is more effective than putting covers over the foliage. Small pots can be insulated by embedding in containers of dry sawdust or similar and watering with warm water also helps. The most successful way to keep the soil in pots correctly wetted throughout is to immerse pots periodically and then allow them to drain thoroughly. A saucer of water is the quickest route to root rot in winter.