

November 17

**1.50 incl.
GST**

Delegate Doings



**Delegate Progress
Association**

ISSN 1446-6716

Volume 16, issue 11.

NEW KITCHEN FOR NURSES COTTAGE

The Nurses Cottage has a brand new and much larger kitchen. The upgrade was made possible by a stronger communities grant, employing local contractors. The Progress Association have also contributed financially. There has been a demand for accommodation up until Christmas and continuing into the New Year.



NEW EXHIBITION IN BUNDIAN WAY GALLERY

Two talented aboriginal artists' work is being displayed at the Bundian Gallery, they are Kathryn Williams and Natalie Bateman. The exhibition will be on display until the end of January.



Inside this issue:

Pony Club Gymkhana	3
Team Penning	7
Golf tournament	7
Tuesday Club	9
School	11
Here & There	13
Looking Back	14

Dates for your Calendar

- 8th November—AGM Delegate Campdraft
- 11th November—Music at Hotel—George Myer
- 14th November—DPA Meeting
- 15th November—AGM Cabanandra Campdraft
- 18th November—Card Night Delegate RSL 5pm
- 18th November—Glass Slumping workshop
- 26th November—Pony Club Gymkhana
- 2nd. December -Anglican Garden Day in Delegate
- 3rd December—Golden Age Party

SENIORS GOLDEN AGE PARTY

A reminder to Senior Citizens to mark Sunday 3rd December on their calendar for the annual Golden Age Party at the Country Club.



Bookings at General Store or phone Marilyn 64588167

YOGA DURING SCHOOL TERM

THURSDAY 5.30pm

SATURDAY 10.30am

At School

Call Su 64588315

Farmhouse wanted to rent

Contact Nicole
0404540157

ANGLICAN PARISH GARDEN DAY

Saturday 2nd December 2017
Commencing at 10:00 am with Morning Tea

At
Delegate Show Ground

All gardens open till 4:00 pm
Lunch between 12:30pm and 2:30pm
at Delegate Show Ground



Market
Stalls

Raffle on
the day

COST \$20 PP

ENTRY INCLUDES ALL GARDENS, MORNING TEA AND LUNCH

AGM

DELEGATE RODEO CAMPDRAFT

Delegate Hotel 8th
November at 7.30pm

AGM

CABNANDRA CAMP- DRAFT CLUB

Delegate Hotel 15th
Nov. at 7.30pm

:DELEGATE COUNTRY CLUB Monster Xmas stocking,

Tickets are available at the local Store and Cafe. A number of generous donations helped to make up this much sought after prize.



Delegate Pony Club Gymkhana

Sunday 26th November 2017

Delegate Showground – 9:00am gear check for a 9:30am start

Entry fee \$20 per rider for registrations received by 12th November 2017

Age Groups

- | | | |
|---------------|-----------------|----------------|
| -Led/Assisted | - 9 & Under 11 | -15 & Under 17 |
| -Under 7 | - 11 & Under 13 | - Associates |
| -7 & Under 9 | - 13 & Under 15 | |

Age Champions for the Day will be awarded at the conclusion of all events

Gymkhana Events

- | | | | |
|---|---------------------|------------------------|--------------|
| - Riding Class | - Western Pole Bend | - Keyhole | |
| - Riding Class | -bareback | - Barrel Race | - Pony Twist |
| - Flag Race | - Diamond Flag | - Straight Barrel Race | |
| - Bending Race | - Clover Leaf | - Keyhole Bounce | |
| - Delegate's Stockmen's Challenge | | | |
| - Table AM7 Showjump – Mini E, E, D, C, B & A grade. No Led or assisted riders to showjump. | | | |

Grading and performance cards **must** be handed in on the morning.

General

- Riders must be financial members of PCANSW – yellow rally card attendance & membership cards **MUST** be presented at registration on the day of the Gymkhana.
- In events involving jumps – rails will be placed on the ground for Led riders as Led riders are not permitted to go over raised poles.
- Led Riders must be led by the horses shoulder. Riders in the Led/Assisted group can interchange between on & off the lead throughout the day but must remain in the same group.
- Riders must have attended 3 rallies in the past 12 months to be eligible for Age Champion
- No responsibility will be accepted by the Delegate Pony Club or Zone 18 in the case of any accident or damage.
- Program can be changed at the discretion of the Delegate Pony Club committee at any time
- Disputes- A fee of \$50.00 is to be lodged with written disputes presented to the Delegate Pony Club disputes committee within 30 minutes of the conclusion of the particular event. The Delegate Pony Club disputes committee shall comprise of one appointed Delegate Pony Club adult member, the ZCI or appointed representative and the Zone President or appointed representative. The fee may be forfeited if the Delegate Pony Club disputes committee considers the dispute frivolous.
- Events will run according to the PCANSW Sporting and Campdraft Rules
- Camping (including Toilets and Showers) permitted at the Showground at **\$10.00** per family per night.

Entries

- Entry fee is \$20 per rider [early entries]– payable on the day by Cash or Direct Debit (Account name: Delegate Pony Club, BSB 082-467, Account 85-468-1698) with funds received by 12th November 2017. Entries on the Day accepted but will incur a \$5.00 late entry fee.
- Entries via club as per Zone procedures, to be emailed to Delegate Pony Club on delegatepony-club@hotmail.com by 5pm 12th November.
- Enquiries to DPC Kelly Voveris on 0406 373 770 or Katrina Jamieson on 0428 301 176 or to delegateponyclub@hotmail.com

All persons, animals & vehicles enter at their own risk.

GLORIA COTTERILL CELEBRATES HER BIRTHDAY

Members of the Exercise group gathered at the Delegate Cafe for coffee and the cutting of the birthday cake, made by Natalie. The group have adopted this as a general practice for each members birthday, and this time two bike riders returning from Phillip Island joined in singing Happy Birthday. They were rewarded with a piece of cake which was enjoyed before they continued on their way.



LOOMING DOCTOR SHORTAGE FOR BOMBALA DISTRICT

With one Doctor on sick leave and another due to take maternity leave next January, this leaves the lone Doctor for this large area, Colin Pate, who was hoping to wind back his surgery hours. Despite advertising there has been no success so far in attracting another Doctor to the practise. It is a fact that there are 65 NSW Country towns without the services of a GP.

For a number of years we keep hearing about plans to alleviate the shortage of rural GP's, but to date have not seen any successful outcomes. We are tired of hearing politicians say that they are looking after the bush, but every year we see our health system failing. It is a known fact that the prospects of surviving a heart attack are very much lower in rural areas.

There was a time when a scholarship system was used with trainee teachers, when they were signed up to teach in rural areas for four years. Perhaps there is already a system like this for Doctors, but if so, we see no signs of it coming to fruition.

10 YEAR HOSPITAL AUXILIARY SERVICE BADGE TO HEATHER SCROOPE

Heather Scroope receiving her 10 year Service Badge from Delegate Hospital Auxiliary President Claire Strickland at the Auxiliary's monthly meeting in October.

Heather is presently Manager of the Delegate MPS but continues in her role as a valued helper for the local Auxiliary.



Jake Heffernan

GSE

GET SWITCHED ELECTRICAL

DOMESTIC > RURAL > COMMERCIAL > INDUSTRIAL

0429 204 168
heff.gse@gmail.com

ABN: 86484386605

Lic No. 276075C

Delegate Café

64 Bombala St Delegate

DINE IN - TAKE AWAY

OPEN 7 DAYS

Fruit & Veg - Groceries

DVD Hire - Eftpos

Tel (02) 6458 8171

Pizza available most Friday & Saturday Nights

ELGAS Distributor

Pickup Only (Sorry no Delivery)

DELEGATE HOTEL

Your host: Graeme Payten

**Accommodation
Counter Lunches**

**Remembrance day 11th Nov. Music by
George Myer—60's to 90's ballads.**

**Sky Channel & Pub Tab,
ATM and Eftpos
Ph: 6458 8091**

TALBOT TRANSPORT



LIVESTOCK & GENERAL

1 Hensleigh Street, DELEGATE 2633

Mobile: 0418 516 076

Phone: (02) 6458 8085

MCKILLOPS BRIDGE DUE TO CLOSE FOR MAINTENANCE

We have received notification from Vic Roads that McKillops bridge will be undergoing maintenance for four weeks.

Work is due to commence Monday 13th November for approximately four weeks weather permitting. The bridge will be closed between 8am and 4pm as during this time the bridge will be impassable.

CORROWONG WALLENDIBBY LANDCARE

FIELD DAY REPORT

With thanks to Tom and Winsome for hosting a thought provoking day.

WEED CONTROL & ENHANCEMENT OF SOIL HEALTH "GLEN ROY" Tombong

"Glen Roy" owned by T and W Millane is a 1000 hectares merino sheep grazing property

In the year of 2000 the following landcare problems existed:

1. Ground cover pasture was very poor, on some parts 0-30% in other parts 30-50%;
2. The soil was very dehydrated with some very bad erosion channels;
3. The weed problem was very bad. In the open country sweet briar and blackberry bush, in the timbered area, dogwood, tea tree and bracken fern;
4. Pasture was poor quality mainly fog grass and kangaroo grass.

The following steps were taken to improve conditions:

1. Reduce the existing stocking rate from 1200 sheep to 500 sheep over the next 4 years;
2. Reduce the weed problem by the use of cool burns (traditional indigenous) improving the health of soil;
1. Improve the health of the soil by replacing the use of chemical fertilisers with dung beetles and salt licks;
2. Improve the hydration of the soil by the installation of small dams (about 2 hrs work with a medium size excavator) in order to impede the speed of water flow across pasture and to connect the base of the dams with the water table. The dams were also installed in the erosion channels to correct erosion.
3. The grazing potential of the timbered areas (about 70% of Glen Roy) was enhanced by the use of a slow burning process to remove weed and unwanted undergrowth (Black berry, dogwood etc) at the base of trees. Once the undergrowth was reduced. the grazing potential was greatly improved under the trees and the weed area reduced.



Results after 17 years are as follows:

1. Soil health is greatly improved, in particular the ability to hold moisture;
2. Pasture coverage increased to 100% with a wide coverage and variety of native grasses including, Kangaroo, Wallaby and Microlaena grasses;
3. Tree health including foliage greatly improved
4. Sheep health and wool cut per sheep very much improved: 3kg to 4.5kg; 21 to 18 micron;
5. Weed eradication, very good results, sweet briar almost eliminated and blackberry very much reduced.

Tom's Conclusion:

The above procedures are slow but cost effective, successful and rewarding.



Participants travelled for Delegate's Team Penning from as far away as Dalgety

Delegate Team Penning's inaugural event was a huge success with fun had by all involved. Our judge was Brett Rogers. We ran an Open, Junior and Sub Junior competitions.

Open Winners: Tanya O'Ryan, James O'Ryan and Katie Cotterell

Open Fastest Time: Darren Lucas, Emily Lucas and John Sutton

Junior Winners: Emily Lucas, Zac, Lucas and Ben Hughes

Junior Fastest Time: Gemma Boreham, Felicity Boreham and Emma Stove

Subbies were all winners!

Max and Gail Smallman ran a very efficient kiosk Friday night and Saturday. And the event wouldn't have been such a success without the generosity of some fabulous sponsors!

Danny and Lana Jamieson, Glen Mia Saddlery



DELEGATE GOLF SUCCESSFUL ANNUAL TOURNAMENT

Delegate Country Club secretary Pat Campbell reports that the recent annual golf tournament was a great success, and she would like to thank all the volunteers and sponsors whose support contributed to the success of the weekend. Former Delegate golfer Helen Crawford won the Ladies Open with a phenomenal score of 76 and she is pictured below with Trina Manning, Ladies Captain. Pictured on right: Group of men ready to hit off on the Sunday.,



REMEMBRANCE DAY 2017

**SATURDAY 11 NOVEMBER 10:40AM
AT THE CENOTAPH**

(School of Arts Hall if Raining)

POPPY APPEAL:

As many of you would be aware, the RSL NSW Branch is undergoing a large degree of upheaval and reform at the moment. The ongoing Bergin enquiry and ACNC investigations have been closely followed by members of the public and ex-military all over the country.

Some of you may not be aware that RSL NSW State Council directed all sub-branches in NSW to suspend charitable fund-raising and Appeals while issues that have culminated in the Bergin enquiry are being dealt with.

Unfortunately, the suspension of Charitable fund raising will still be in force during the November Poppy Appeal. The RSL recognises the importance of this Appeal and accordingly, State Council and the Welfare and Benevolent Fund have provided around 90 poppies to Delegate for the sub-branch to give out to the public on the day.

We intend to have ex-military members of the sub-branch and our committee handing poppies out on November 11th to members of the community with our heartfelt gratitude for the help, respect and support you give to our veterans, both past and present. It is noticed and very much appreciated and we would urge you all to wear a poppy in Remembrance of those who paid the ultimate price for our freedoms over past and current conflicts.

I must Stress that we are currently unable to accept any money for those poppies at all.

Once again, I would like to thank you all for your support and help over the years and urge you all to be patient while the RSL sorts out those who would bring the league into discredit and refines its processes to avoid future potential for misuse of funds.

Please join with us on November 11th at the Delegate Cenotaph in commemoration for all who have died in service to this town and this country.

Phil Pope

President

Delegate RSL sub-Branch

NEWS FROM ST JOSEPH'S SCHOOL CENTRE

Due to generous donations from the community, including the Sunday Sippers, St Joseph's School Centre, last painted in 1978 is about to receive a much needed makeover with work to commence on the exterior in early November.

Trees have already been planted last Autumn to provide much needed shade and visually improve the Church's surroundings.

On completion of the work on the School Centre, ongoing fundraising will be necessary towards maintenance and painting of the Church roof.

A special Mass will be celebrated in the near future, to which everyone is invited to say thank you to the Community for their generosity, more details closer to the date.

Delegate Multi Purpose Service

Wellness Clinic is held at the MPS, in Craigie Street Delegate. People come to the clinic for procedures and assessment by nursing staff.

The clinic is open

Mon, Tue, Thur, Fri 1pm to 2pm

Every week except public holidays.

No Appointments necessary.

A variety of procedures are available.

- Wound care
- Blood pressure readings
- Blood sugar readings
- Non-urgent ECG's
- Suture or clip removal
- Injections – with Dr's written order
- Other procedures that do not require a Dr.

Pathology clinic

Wednesday 9.30am – 10.30 am. No appointment necessary. Closed public holidays.

Other Services

Women's Health Nurse

3rd Wed of the month

Dietician and Diabetes Educator

2nd Thur of the month

Immunisations – 4th Fri of the month

Podiatry – for HACC clients – monthly

Ring the MPS for appointments for the dietician, diabetes, immunisation, podiatry and women's health 6459 8000

Child and Family Health – visits Delegate MPS on a regular basis ring Kirsty on 6458 5777 for an appointment.

CONGRATULATIONS

To Leah Chandler, daughter of Carl and Barbara Cotton of Darwin. Leah competed at the World Masters Weightlifting Cup on the Gold Coast last week-end and won a silver medal in the Australian Masters, Pan Pacific and Oceania Masters.



TUESDAY CLUB DINE OUT AT BOMBALA'S HERITAGE RESTUARANT.

About twelve members and friends had lunch in Bombala for our October meeting. After a delicious meal at the Heritage, we then went to the new Visitors Centre, which has a wonderful display of giftware, art and craft which some of the ladies were unable to resist buying. We then visited the Museum next door, which houses an array of vintage memorabilia as well as a special room dedicated to St Mary of the Cross MacKillop, as the building was originally a convent. A quick visit to the old Railway Station where we were able to view a very interesting display of old photographs and newspaper articles. At this stage rain had commenced to fall so it was only a very short visit to the Garden Centre, nevertheless all enjoyed the day with a request to come again another day. Members are advised to check local shop windows for notices regarding November meeting.



Delegate & District Preschool Fundraiser

Tickets are \$50 each, or a book of 5 tickets is \$250.

We are only selling a total of 500 tickets, so the odds of winning are very favourable. For example, if one single ticket is bought, there is a 3 in 500 chance of winning a prize. If a book is purchased, the five tickets will give you a 15 in 500 chance of winning a prize, plus an extra chance at winning the \$500 book buyers prize.

If you feel the amount of the tickets is a bit steep, remember the odds are better than lotto, or the pokies, etc, the prizes are generous and you can always form a syndicate with a friend or family member to be able to afford it. Also, it's a donation to keep our preschool not only open, but of high quality for our children.


Tickets are selling fast so please go online at <http://www.delegate.nsw.au/business/preschool/> or drop in at the Preschool on Tuesdays or Wednesdays to get your tickets.

Delegate & District Preschool Fundraiser Raffle

www.delegate.nsw.au/business/preschool/

WIN A CAR!

*\$50 Per ticket
Great odds!*




**1st Prize: 2018 Toyota Yaris with Rego,
valued at \$17,490**


2nd Prize: \$500 Cash

3rd Prize: 2 loads of wood

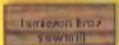
Book Buyers Draw: \$500 Cash




Cottrell Toyota, Bombala



Landmark, Delegate & Bombala



Jamieson Bros, Bendoc



Sunday Sips

Drawn 5:30pm Saturday, 2nd June, 2018 at the Delegate Country Club. Need not be present to win. Results published Monaro Post. All proceeds to the Delegate Preschool. Contact: accounts@delegatepreschool.com
Charitable Fundraising Number: 13289. Image displayed as example, not actual prize.

A LOCAL SCHOOL TO BE PROUD OF WHERE OPPORTUNITIES ABOUND



Whether you're in
the CLASSROOM or the KITCHEN
or if you're out in
the PLAYGROUND or the GARDEN
There's always so much to do
at Delegate School



LANDMARK

an AWB company

Delegate

Tel: 6458 8004

Livestock— Tony Brady,

Sam Platts

Agronomy— Kathryn

Bullas

0409032019

Merchandise

Fertilisers

Delegate Hair Boutique



Open
All Day Fridays
Delegate School
of Arts
Call in on the day
or telephone
0427587240
For an appointment

**PLUS For all
Your Floral
Arrangements**

weddings,
Birthdays,
Anniversaries,
Wreaths and
Private
Functions

**Phone Pam
on 6458 4346**

Mob: 0427587240



Berry interschool Equestrian Championships – October long weekend

Georgie Dunn

Overall champion year 4. Overall Champion Show jumper Primary - Georgie won all 3 jumping events. Overall Champion sporting Primary . 1st Hunter Challenge – Year 4. 1st in Pairs with Mackenzie

Georgie had the fastest time in 4 out of 6 sporting events overall in the primary section and Mackenzie was the fastest in one of those events so the Dunn girls took out 5 fastest times in the sporting



Mackenzie Dunn

Overall Reserve champion show Jumper Primary – Mackenzie came second to Georgie on 2 Occasions

Sporting. 1st western bend, Snakes and ladders & Scudahoe year 5 with the Primary fastest time in the western bend. 2nd in her Rider class. 1st in pairs with Georgie

The girls got lots of ribbon. These are just a few of the results, they did the school proud.



HERE & THERE

Birthday greetings to all those born in November, including Norman Talbot, Terry O'Hagan, Jessi Reed, Jack Reed, John Callaway, Alan Cotterill.



The death occurred in Bairnsdale Hospital on the 14th October after a long illness of a previous Bonang resident David Minchin. The funeral was held at Bairnsdale Lawn Cemetery on Friday 20th October. David is survived by his wife Kaye, and three children, Richard, Lyn and Andrew, and 8 grandchildren. Three sisters, Helen, Nona and Jean and one brother Ian (Blue), Alan (Decd)

The death also occurred recently of a former Delegate girl, Gloria Baker (nee Morrison). Gloria is survived by two children and one sister Shirley.

A former lady born at Hayden's Bog just over 100 years ago has passed away recently in Melbourne. Mrs. Bertha Tate (nee Jamieson) is survived by two children Jan and Rob. One sister Dulcie is her only surviving sibling. We extend our sympathy to all.

We extend our sympathy to all bereaved.

Philip Reed has emailed us to draw attention to the fact that all members of the Delegate Tigers Junior Rugby League team who held their re-union recently are still "alive and kicking" as he termed it. It is a true that when one looks at past sporting teams, the sad fact becomes apparent that many or those pictured are no longer with us.

The Bombala Race Committee report that their annual Caulfield Cup Race day was both financially and socially successful, with a good crowd enjoying the outing in beautiful spring weather. They plan to make some improvements to facilities in the coming year



CREATIVE WORKSHOPS

Talented parents and community members have offered to run creative workshops with students of the Delegate Public School on Wednesday afternoons starting on the 25th of October.

Students will have the chance to choose from six exciting activities, including: woodwork, photography, dream catchers, book marks, charcoal drawers, hand-made organisers.

STREETSCAPE MEETING

Around 25 people crowded into the meeting room at the RTC to meet with visiting Council staff regarding the proposed street-

scape. Most of us came away none the wiser as to what is going to happen, with no knowledge of the amount which has been allocated to us. We are being asked to list our 10 top priorities, at the same time fearing that a number of them will not be funded. Many maintenance items which have long been in the pipeline, now appear to be included in our streetscape funding, which is a great disappointment.

The Bendoc bus will be travelling to Cooma to see the latest production at the Cooma Little Theatre on 11th November. Ring Bendoc Neighbourhood House to book

A Flying Doctor Optometrist Service will be visiting Goongerah on Monday 13th to Thursday 15th November. We are nearing the stage where a Flying Doctor Service is needed over the Border in NSW.

The annual meetings of both the Delegate and Cabanandra Campdraft Committees will be held next week and the week after at the Delegate Hotel (see ad P. 2) A decision will be made regarding the future of the popular annual Cabanandra Campdraft. These events keep growing in popularity, but involve a lot of hard work for the organisers.

LOOKING BACK



A bullock team carrying a load of wool in front of Delegate Post Office, from our collection of Heritage photos.



An early photo of Stewart's Garage, which today is owned and managed by John Stewart, a grandson of the original proprietor Geoff Stewart. Prior to being a garage it is thought that the building may have been a shop. It is certainly a heritage item as the front of the building has changed very little. The man in the overalls is said to be Herb Callaghan.

Community Information

EMERGENCY / AMBULANCE: 000

FIRE: 000

POLICE

Delegate: 6458 8044

Bombala : 64583444

Cooma: 6452 0099

Bendoc: 6458 1523

HOSPITAL: 6459 8000

DOCTOR: 64951369

CHURCHES

Catholic: Father Mick McAndrew 64522062

Sister Teresa Keane: 6458 3045

Services: Delegate Saturday 6:00pm

Liturgy of the word and Holy Communion

Bombala Sunday 9:00am

Liturgy of the word and Holy Communion

Anglican: Rev. Robert Lindeck 6241557 Mob.

0408531544

Rev Judy Holdsworth—64583513

Services: 11am every Sunday..

COMMUNITY HEALTH (3 days per week)

Generalist Community Nurse –Monday, Thursday, Friday

Wellness Clinic—Monday , Tuesday, Thursday and Friday 1pm to 2pm

Pathology—Wednesdays 0930-1-3- hours

Immunisation Clinic—Fourth Thursday from 1100hours.

Podiatry Clinic

Victorian Visits Tuesdays

Call MPS 64598000

Healthdirect and GP helpline 1800022222

MONARO FAMILY SUPPORT SERVICE

Bombala Office: 6458 4888

open Tues to Thurs - 9:00am to 5:00pm

COUNCIL CHAMBERS: 6458 3555

DELEGATE PRE-SCHOOL: 6458 8196

DELEGATE PUBLIC SCHOOL: 6458 8183

DELEGATE PROGRESS ASSOCIATION

RTCT Centre - 6458 8388— dpaoffice@bigpond.com

Newspaper: delegateprogress@exemail.com.au

NRMA/RACV: Jack Stewart: 64588047

TUBBUT ACCESS CENTRE: 6458 0295

DELEGATE CARAVAN PARK: 64584047

Delegate Progress Association Inc.

66A Bombala Street

DELEGATE NSW 2633

PH 6458 8388 Fax 64588 374

E-mail dpaoffice@bigpond.com

delegateprogress@exemail.com.au

(for paper)

‘Delegate Doings’ Subscription:

\$38.60 by Post

Email \$16.50.

Cash or Cheque payable to

The Delegate Progress Association Inc

Amount \$ _____

Name

Address or email:

The Delegate Doings is published by the Delegate Progress Association. We welcome information about meetings and reports on functions and other activities of local people and organisations, factual historical articles and poetry etc. We do not publish letters to the editor. The publisher accepts no responsibility for any advertisement, or articles. Any advertisement or article is published at the risk of the contributor, who accepts liability for any intended publication. All such contributors agree to indemnify the publisher and warrant that the material is accurate and is neither deceptive or misleading, in breach of copyright, defamatory, or in breach of any other laws and regulations.

ADVERTISING IN THE “DELEGATE DOINGS”

Spot Ad:	1	6	11
\$5 cash—\$7.50 a/c	Issue	Issues	Issues
1/4 Page	\$17.50	\$87.50	\$157.50
1/2 Page	\$35.00	\$175.00	\$315.00
Full Page	\$70.00	\$350.00	\$630.00
Back Page	\$80.00		
Full Page Insert	\$90.00		

Colour advertising: prices on application

November is Iris Month

The most flamboyant flower of early November in our district must be the bearded iris. It is a colourful prelude to the rose display that peaks at the end of this month. There are so many variations in colour and form of the bearded iris that it is tempting to start a collection, but beware – there are about 30,000 named varieties available making choices about as difficult as determining one's favourite rose.

The bearded iris does well in our climate because it needs a lot of winter frost to initiate flowering. A problem that could occur is that our summers are not really hot enough to keep their rhizomes in good health as they are prone to rotting if not exposed to a good baking in summer. It is essential that the rhizomes lay on top of the soil and that they do not get covered by mulch or creeping plants. After flowering the plants do not require watering and they do particularly well if they receive reflected heat from paving or a stone mulch.

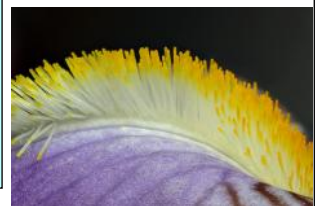
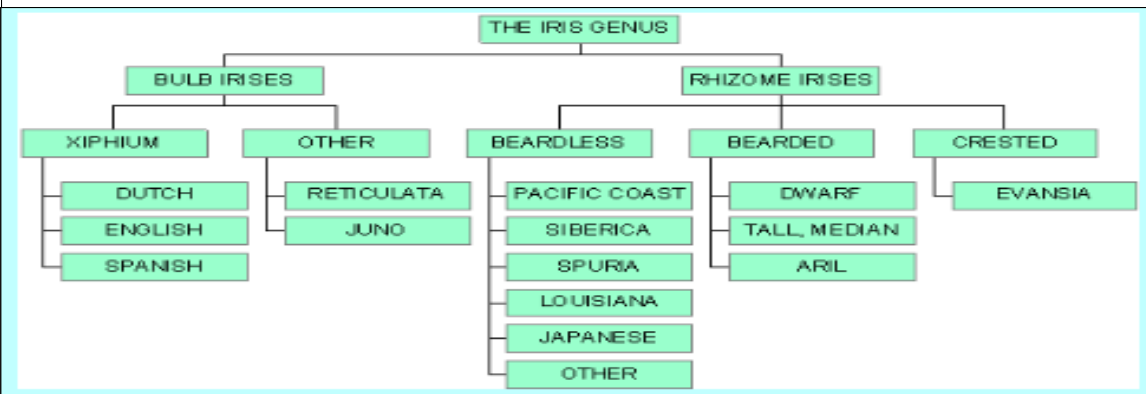
The fungal spot that disfigures the leaves is a common problem. It is most severe when iris are grown in the shade or over-crowded or too well fed. The waxy coating on the leaves is normally thickened by the sun and this repels water and therefore entry of the fungal spores. Wax also discourages slug and snail attack. Bearded iris prefer alkaline conditions so the soil needs to be well limed which makes them compatible with the growing conditions favoured by lavender and roses. Lime provides calcium in the soil and its uptake strengthens the cell walls further increasing resistance to fungal problems.

To keep the clumps vigorous it is a good idea to thin them out straight after flowering. Remove those parts that have borne flowers as these will not flower again. The next year's flowers are always carried on new growth which is the small side shoots that form on the older rhizomes.

Bearded iris have been extensively hybridised which has greatly increased the flower size and colour range but at the expense of perfume. This also happened in the early days of rose breeding. There are now some varieties bred to repeat flower and there are also dwarf forms, some growing only 20 cms. that are ideal for pots or the front of beds. These have the advantage of being wind resistant.

The median iris is a cross between the tall and dwarf forms making sturdy clumps about 50cms tall with dense flower heads and these are sterile.

The Iris family is large and mostly a Northern hemisphere group (see below).



Most inhabit exposed landscapes. An exception is the water iris and the most familiar to us is *Iris pseudacorus* a native of U.K. It is widely used to filter water but can become a choking weed of streams. Its yellow flowers can be seen along Delegate River. The decorative water iris are the Louisiana group but they only tolerate light frost. As can be seen from the chart above the basic division of Iris is whether they grow from bulbs (deciduous) or rhizomes (evergreen). The most familiar bulb type is the Dutch Iris and the bearded iris is an example of the rhizome type along with the small winter flowering Algerian types.

All iris attract insects by providing nectar and they have different strategies. In Dutch iris (*Iris xiphium X tingitana*) (left) the yellow flash is the landing signal.

The single petal of the Algerian iris (*Iris unguicularis*) shows line markings that guides a different set of insects.

The beard on the bearded iris is a pollen bearing brush that is most effective in transferring pollen to hairy bodied insects as they walk over the brush.

