

September 2018

1.50 incl.
GST

Delegate Doings



ISSN 1446-6716

Volume 18, issue 9.

STUDENT DOCTORS VISIT DELEGATE MPS

Delegate and Bombala welcomed a group of 27 Medical Students from the Australian National University on Wednesday 15th August. The Students arrived in Delegate in time for morning tea at the Delegate Multi Purpose Service, where they split into two groups, taking turns to be shown around the facility by Manager Heather Scroope, while the other group had morning tea.

The catering was done by the Delegate Progress Association and the visitors were very impressed with the array of food on offer. It was an opportunity to meet and talk with members of the local community and get a small taste of what life might be like in an isolated rural area. Present also was Deb Foskey representing the considerable number of people over the Victorian Border who depend on NSW for Medical Services.

After morning tea it was on to Bombala for a tour of the MPS, and a talk with Dr Colin Pate. The group then moved on to Club Bombala for lunch, where they met with members of the Bombala Community.

All of the students are destined to work in rural towns, which brings hope to communities who are crying out for more medical services. They were a delightful group of young people, happy to chat with the locals, and we hope the visit to the Snowy Monaro Regional Council area will encourage some of them to come to Southern Monaro, not just to the larger centres, but to the more isolated, smaller towns in the Shire.

Below: One of the students chatting with John Judge, Rhonda Linehan from the MPS with Kylie Douch from Cooma, who arranged the visit. Dr. Wildes the ANU representative from the Cooma Hospital.



Next Issue: Oct 6th

then: Nov 9th and: Dec 7th

Inside this issue:

Snowy Monaro Reg. Connections	3
Blue Heelers	4
Fire Permit Conditions	9
School News	10
Garden Article	11
School News	13
Looking Back	14

Dates for your Calendar

- 11th September—DPA meeting
- 12th September – Snowy Lunch
- 18th September – Mens Group - Guest Speaker at the Werri-Nina Centre Cooma
- 19th September – Lunch Club at The Bake House, Adamaby
- 26th September – Birdsnest Tour, Cooma
- 26th September—Hospital Auxiliary Luncheon
- 6th/7th October—Delegate Golf Club Tournament
- 13th/14th October—Team Penning and Team Sorting
- 27th/28th October—Celebrating our Heritage week-end
- 1st November River workshop Bill Jeffries park CW Landcare

DELEGATE HOSPITAL AUXILIARY

CASSEROLE LUNCHEON Wednesday 26th September

Delegate Country Club

11.20 for 12 noon start

\$15.00 per head (2 courses)

**Door Prize and Raffle on Day.
Special Guest Millinery artist
Cynthia Jones Bryson who will
demonstrate her special skills at
making beautiful hats.**

**To book ring: Claire on 6458143
or Gail on 6458 7128**

DELEGATE'S CELEBRATING OUR HERITAGE WEEKEND

October 27th and 28th

**Saturday—Old time games, market stalls
and lunch at Bill Jeffreys Park**

Commencing 10am—2pm

**Enjoy tea & damper at the Settler's Hut
and later at 5pm wine and nibbles**

**Saturday evening commencing at 6.30
Music and Dinner at the Country Club**

**Sunday 10am a thanksgiving service at the
Delegate Cemetery, commemorating end of
WW1 and welcoming home the soldiers from the
war. March into town following the original route,
up Victoria Parade to the Monument where local
Federal Member the Hon. Mike Kelly will unveil
the Men from Snowy River Plaque. Opening of
new Plaza by State Member the Hon. John Bari-
laro.**

SNOWY MONARO REGIONAL COUNCIL COMMUNITY CONNECTIONS.

Delegate Senior Citizens were invited to attend a meeting at the Rural Transaction Centre of Wednesday 5th September to discuss the which includes exercise, creativity and community participation. Also a chance to explore our region and beyond with the many outings that are planned and to stay active, connected with the community and socialize. They say the Council area contains some beautiful townships and villages and they want to showcase them. Transport will be available for these activities at a small fee plus the cost of any activity. Anyone interested need to contact Geraldine at Bombala 645834620.

Below: Lynette, Maria, Jackie, Alma, Carol, Lisa from SMRC. R: Doreen, Ellie and Shelley



12th September – Snowy Lunch

Remember your winter woollies for todays trip to Perisher Blue. Our group will be travelling to Bullocks Flat to catch the ski tube to Mount Blue Cow, where we will have lunch at the Blue Cow Bistro while enjoying spectacular views over the snowy mountains.

Transport: \$5.00, Activity: \$5.00, lunch at own cost.

18th September – Mens Group - Guest Speaker at the Werri-Nina Centre Cooma

We will be joined at the Werri-Nina Centre today by a guest speaker John Davis who will give us a presentation on the rewards and challenges of being a trek leader on the Kokoda Track. With spring in the air we will also be discussing gardening projects to help beautify both our gardens at home and the Werri-Nina Centre courtyard.

19th September – Lunch Club at The Bake House, Adaminaby

Lunch and drinks

26th September – Birdsnest Tour, Cooma

Cooma retail clothing store 'Birdsnest' opened in 2006 with a team of just four people, this was followed by the online store which was launched in 2008. Today the online store is in the top 40 most visited apparel sites in Australia and employs over 140 team members. Today we will visit this amazingly successful store with a behind the scenes tour showing 'the journey of the dress' – how the team makes it all work! We will then be heading to the Cooma Ex-Services Club for lunch.

Transport: \$5.00, Activity: \$5.00, lunch at own cost.

If you would like to attend any of these activities please call our office on 6451 1059 and we will organise transport to pick you up from your home so you can attend.

CONGRATULATIONS BLUE HEELERS

Below: The winning team. R: Andrew Guthrie with brother John. Andrew kicked the long range goal which sealed the match 14/12.



DELEGATE GOLF CLUB WORKING B

Some of the equipment kindly loaned by Carl Crotty and Bombala Forestry for the working B at the Golf Course on the 8th August.

A group of men and women braved the windy conditions to clean up the course and gardens, in readiness for the annual gold tournament on the 6th and 7th October.

The Club will also be a hive of activity on the Celebrating our Heritage week-end, the 27th of October for dinner and a night of music

**SATURDAY
22 SEPT 2018
JIGAMY, EDEN NSW
10AM TO 10.30PM**



**FAMILY FRIENDLY
ALCOHOL & DRUG FREE
ALL AGES EVEN**

CELEBRATING ABORIGINAL ARTS & CULTURE
TWO STAGES * DANCE CIRCLE * ARTS MARKET & EXHIBITIONS
CULTURAL DEMONSTRATIONS * FILM * STORIES & SPOKEN WORD * FOOD

**GIIYONG
FESTIVAL**

NO FIXED ADDRESS * BAKER BOY * FRANK YAMMA * SEAN CHOOBURRA
BENNY WALKER * MISSION SONGS PROJECT FEATURING JESSIE LLOYD AND EMMA DONOVAN
MARK ATKINS * ROBBIE BUNDLE * WARREN FOSTER SNR * DALLAS WOODS
CHELSEY ATKINS * C.J. LEON * GABADOO * DOCKER RIVER BAND * GROW THE MUSIC
DUURUNU MIRU DANCERS * SPECIAL GUESTS: GULAGA DANCERS * DJAADJAWAN DANCERS
GADHU DANCERS * DRIFTING DOOLAGAHLS * ALLO WALKER * WARREN FOSTER JNR
ONE MOB DREAMING CHOIR * NGIOKA BUNDA-HEATH * GLENN SHEA * ALI COBBY ECKERMANN
UNCLE NOEL BUTLER * UNCLE OSSIE CRUSE * JEANINE LEANE * BRUCE PASCOE * DR JACKIE HUGGINS
NATHAN LYDON * MEAGHAN HOLT * RODNEY KELLY * RAW KREATIONS * BRUCE & TIM ELLA... AND MORE

LET US KNOW YOU'RE COMING & GET INFO @ WWW.GIIYONG.COM.AU

Delegate Café

64 Bombala St Delegate

DINE IN - TAKE AWAY

OPEN 7 DAYS

Fruit & Veg - Groceries

DVD Hire - Eftpos

Tel (02) 6458 8171

Pizza available most Friday & Saturday Nights

ELGAS Distributor

Pickup Only (Sorry no Delivery)

DELEGATE HOTEL

Your Host Paul Herringe

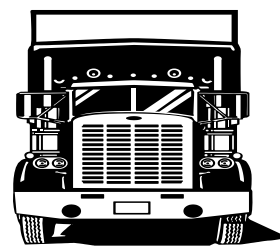
**Accommodation
Counter Lunches**



**Sky Channel & Pub Tab,
ATM and Eftpos**

Ph: 6458 8091

*TALBOT
TRANSPORT*



LIVESTOCK & GENERAL

1 Hensleigh Street, DELEGATE 2633

Mobile: 0418 516 076

Phone: (02) 6458 8085

Fax: (02) 6458 8055

OBITUARY STANLEY GEORGE JAMIESON 11/2/1926 TO 18/8/12

Stanley George Jamieson was born at Hayden's Bog in Victoria on 11 February 1926, the second of six children for Ernest and Freda Jamieson. His sister Margaret and brother Ashley are the only surviving members of the family.

Stan attended school at Hayden's Bog, a three mile walk from home with no shoes in the snow, as he would often recall. Stan did not enjoy school and left at age 14 to work with his father and older brother at the timber mill and driving their bullock team snigging logs out of the bush.

The family moved closer to Bendoc setting up a saw mill and operated it for several years.

On 29 September 1947 he married Joan and the following year Rhonda was born, whom he referred to as "Jim" throughout his life. They moved to Traralgon where Stan worked on a paper mill for two years before moving to Quaama, near Bega on the South Coast of NSW to work on a dairy his father had purchased, for the next twelve months.

They returned to Lower Bendoc where he bought land and worked on a mill in Bendoc for the late Cliff Yelds, for several years. He then spent a couple of years working on a farm in Craigie for the late Jack Reed before going back to Bendoc to work on what was Mason's Mill and then Richard's Mill until he retired in 1992. During this time he purchased a house in Delegate and travelled to work on the mill bus.

Stan's home was his castle and he kept his house and garden in meticulous order and grew some of the largest vegetables ever which he proudly shared with his family and friends.

Stan and Joan spent some time working in shearing sheds around Cooma, Stan rouse-abouting and Joan cooking. They were well known for helping out at community events such as the Cabanandra Campdraft and Stan had a great knack for gaining friendships and was well liked throughout his life.

Stan was a fearless horse rider throughout his early years, though horses were the subject of much light hearted banter and dismay with his "horse mad" family, unless there had been some significant prize money won!

They sold their home in Delegate and moved to the Moruya area for a number of years before relocating to Harden in 2006.

Stan was a man of many interests and his favourite hobby was collecting and repairing clocks, often setting them on just slightly different times so there was almost a continuous chorus of chiming. He constructed numerous puzzles and gadgets finding amusement in those less fortunate in being able to work them out without being shown, multiple times!

Stan enjoyed being competitive and was a skillful card player and a natural at lawn bowls and snooker. Coming from a musical family Stan loved the old time music and dancing. He could often be heard playing the accordion as he relaxed of an evening by the fire.

He had a great sense of humour and loved to have a joke.

Stan is survived by his wife Joan, his daughter Rhonda, son in-law Max, grand daughter Sharyn and her husband Steve, his great grand daughter Emily, whom he always referred to as "my special girl", sister in-law Shirley, and Donna his special niece.

Always loved, he will never to be forgotten.





Delegate

Tel: 6458 8004

Livestock— Tony Brady,

Sam Platts

Agronomy— Kathryn

Bullas

0409032019

Merchandise

Fertilisers

Delegate Hair Boutique



Open
All Day Fri days
Delegate School
of Arts
Call in on the day
or telephone
0427587240
For an appointment

PLUS For all
Your Floral
Arrangements

Weddi ngs,
Bi rthdays,
Anni versari es,
Wreaths and
Pri vate
Functi ons

Phone Pam
on 6458 4346
Mob: 0427587240



MS READ-A-THON

Isabella Tonissen has participated in the MS Read-A-Thon throughout the month of August and has raised over \$300, \$250 of this was raised in just 2 days. She loves to read and has already read 7 books and has more to finish before the end of the month. Bella wanted to do this so she could help children and families who are affected by MS enjoy family camps and wellness activities to help with the stress MS causes.

The certificate was awarded to Bella on Tuesday at the school assembly as she was the only child participating in it from Delegate Public School.



MEDIA RELEASE

Forest Fire Management, Victoria have advised that fire restrictions for Wellington and East Gippsland Shires will start from September 10 and continue until May 2019 unless otherwise stated.

CFA Assistant Chief Officer Trevor Owen said that restrictions are being enforced early to minimise the risk of more grass and bushfires being started by private burn-offs in the current dry conditions.

CFA and FFMVic have already responded to an unprecedented number of early fires this year, the majority of which were caused by burn-offs on private land getting out of control. In many instances, the landholders did all the right things and were caught out by sudden changes in wind and weather and very dry fuels.



SNOW

Delegate received a very welcome snow fall over the week end of the 18th and 19th of August, putting some much needed moisture into pastures. The photo below was taken by Patricia Campbell at their property on Rocky Range where they received just short of 20mm of moisture.



Bombala Rotary Market

Saturday 24th November 2018

8am – 2pm

Along the banks of the
Bombala River

*For additional information or to
secure your stall site please call*

Geraldine Dyer 0448 351 962

Tanya Ingram 0408 301 813

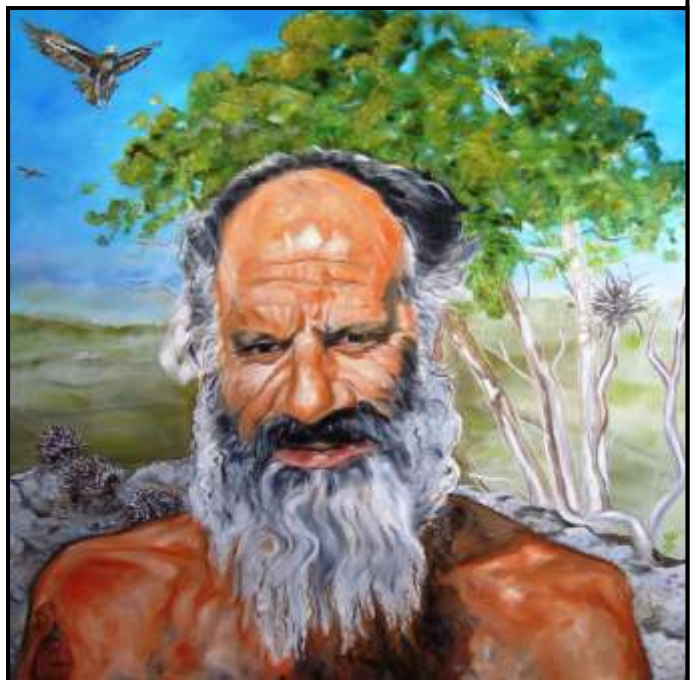
Or email mgdyer@bigpond.net.au



BUNDIAN GALLERY HAPPENINGS.

Following the present exhibition by artists Bronwyn Smith and Gavin Chatfield, there will be an exhibition of portraits of aboriginal people from the You n me Exhibition. This will open after the Giyyong Festival on the 22nd. September and go through until mid November.

Below are some of the portraits titled Elaine and Dougie which are featured in the exhibition.



Delegate Multi Purpose Service

Wellness Clinic is held at the MPS, in Craigie Street Delegate. People come to the clinic for procedures and assessment by nursing staff.

The clinic is open

Mon, Tue, Thur, Fri 1pm to 2pm

Every week except public holidays.

No Appointments necessary.

A variety of procedures are available.

- Wound care
- Blood pressure readings
- Blood sugar readings
- Non-urgent ECG's
- Suture or clip removal
- Injections – with Dr's written order
- Other procedures that do not require a Dr.

Pathology clinic

Wednesday 9.30am – 10.30 am. No appointment necessary. Closed public holidays.

Other Services

Women's Health Nurse

3rd Wed of the month

Dietician and Diabetes Educator

2nd Thur of the month

Immunisations – 4th Fri of the month

Podiatry – for HACC clients – monthly

Ring the MPS for appointments for the dietician, diabetes, immunisation, podiatry and women's health 6459 8000

Child and Family Health – visits Delegate MPS on a regular basis ring Kirsty on 6458 5777 for an appointment.

FIRE PERMIT

CONDITIONS DUE TO DRY WEATHER.

Starting 1st September

1. **NO TIMBER**– No piles, no bush, no “Just a small pile of garden stuff”. No timber at all.
2. **Agricultural burning only** pasture management, cropping etc with additional conditions.
3. **Permits not issued for more than 4 days.**
4. **Consider additional restrictions or notification requirement as Permit Officer feels necessary.**
5. **Notification requirements remain in place-24 hours notice to FCC and neighbours. Copy of signed permit to FCC before lighting.**
6. **Consider restricting start time, i.e. no burning before 4pm– Take advantage of higher evening Relative Humidity.**

IF A FIRE OCCURRS RING 000.

For Permits consult your local Brigade.

R: Some of the visiting Medical Students.



DELEGATE SCHOOL NEWS



P&C FUNDRAISER

Hands Up Choc-a-holics its time to raise funds for fun! Our Year 6 Fundraising needs your help to ensure an equitable cost/effort for each child on their fun filled week in Melbourne —the more money raised the better for families, even if you don't have a child in Year 6 yet—you eventually will. Please talk to Shelley Dunn for chocolates / or more chocolates to sell (0429 432 663)



September Garden 2018

It is hard to be either enthusiastic or positive about the 2018 growing season in the absence of good soaking rain, although the problems in the garden are as nothing compared with those of the farming community.

The effect of the dry conditions is already evident even in resilient plants such as Spring flowering bulbs e.g. daffodils. In my garden, despite a strategic watering early last month, they have short stems and stunted foliage. These bulbs have numerous survival strategies. The flower we see in 2018 was formed in the bulb during the 2017 Summer and reflects the conditions of that year. However, to support the current season's vegetative growth the roots have been actively searching for water and nutrients all through the 2018 Winter thus reflecting the current conditions.

In the wild by spreading their response to resources over two years gives some survival insurance to daffodils as it is less likely that two successive years will be catastrophic in the harsh areas of their native home, the mountains of Spain and Portugal. Add to this their ability to reproduce by seed that gives the means to survive through time and to disperse in location. The habit of withdrawing nutrients from the leaves into the bulb for storage thus avoiding both the winter freeze and making the most of minerals captured from thin soils also aids persistence. All this means that these bulbs are the great survivors - but they do have a weakness, they rot when too wet, think normal garden beds.

Daffodils have been intensively bred from their diminutive species to have showy flowers and lush foliage, just have the tulips from the mountains of Central Asia. Some of their natural resilience is lost in the this 'enlarging' process. Gardeners often collect 'new' varieties only to have them seemingly disappear from the garden. They have most likely succumbed to what is, for them, overwatering.

Last summer in Delegate, when it was uncharacteristically hot, many deciduous trees lost their leaves early. The leaves of silver birch and liquidambars dried and fell. This short circuited the process of withdrawal of nutrients that gives the normal Autumn colours. If this happens too often trees are not only weakened but the sap in the trunks are unable to resist winter freezing.



Watering the garden is likely to be the main concern this year. We should be mindful of not wasting water and each watering should be strategic. It is tempting to splash a bit of water around to freshen foliage. This is ultimately damaging to plants as the roots contract and then die letting in disease.

It is best to give a deep watering every 3-4 weeks and this may mean 20 mins of a gentle sprinkler. You can test how deep the water has penetrated by pushing a rod into the soil until there is resistance. It is quite good for the top centimetre or so of soil to dry out between waterings because it restricts further evaporation from the soil.

Pots are more difficult to manage as they dry out so quickly and, once dry, the applied water tends to run down the inner sides of the pot with the root ball never getting properly wet. The best way to water pots is to have a large container such as a garbage bin in which to submerge them. It is always interesting to see how much air bubbles out of the dry soil. This method also gets rid of slaters and ants that infest the soil in pots. When white salts appear on the surface soil of pots it is also time to give them a good flush in this way. It is also an ideal way of fertilising with seaweed and the like avoiding waste. Pots can grouped together in hot times. This to not only minimises evaporation but also to reduces soil heating especially where the pots are plastic.

And lastly, this is probably not going to be the year to establish a new garden!

DELEGATE PONY CLUB HAPPENINGS

Delegate Pony Club held their 1st rally for spring and it was a chilly day.

Guest instructor Ange Kane came along and work with the riders on a number of things. She ran a session of flat work, upright riding positions and diagonals. All the rider got a lot out of their session with Ange and enjoyed her instructing. Thanks Ange for coming and braving the cold with us all.

Rowena Butterworth ran the riders through their paces with trot poles and positioning in jumping with diagonals. This was a very well run session with working on different instructions. Rowena and Jasmine Butterworth ran the riders through some great specialised techniques for mounted games. Jasmine learnt these techniques at a mounted games session she attended and couldn't wait to share these with her fellow team.

Our next rally will be 7th October 930am gear check with a 10am start.



HERE & THERE

Happy Birthday to all those born in September, including Russel and Alan Buckman, Chelsea Kimber, Renee Crawford, Helen Crawford, Kyden Reed, Neil Curry, Sandra Walker, Jan Ingram.



The death occurred recently at the Delegate MPS of Delegate Resident, Mrs. June Raines, followed by a private cremation at Wolumla Crematorium. June is survived by husband Jeff and two children Natasha and Kane, and three grandchildren, Logan, Paige and Chase. We extend our sympathy to the family.

We also report the death of a former local Judy Martin who died recently in Cooma Hospital after a long illness. Her funeral took place in Cooma on Monday 13th August. Judy is survived by her Mother Ann, one Sister Lana, and two brothers Guy and Ross and sympathy is extended to all.

Congratulations to Sinead and Jordan Cameron, a boy, born at Cooma Hospital. The new arrival is to be named Jake and is a brother to Aspen and Anna.



Congratulations also to Esther and Jamie Ingram on the arrival of a son. He is the fourth grandchild for Wendy and Kelvin Ingram and the 15th grandchild for Connie Malone. The little boy who is to be named Elliott Victor is a brother to Harlan. Connie



also has two great grandchildren.

Congratulations to Lydia Jamieson, daughter of Katrina and Wayne on winning four ribbons at the Bemboka Gymkhana recently. Lydia was riding her new horse AJ for the first time. The Delegate Pony Club children just keep on improving.

Dear wonderful folks of the Delegate Progress Association-

Thank you for hosting the combined activity groups visit to Delegate on July 4. All who attended enjoyed the outing and your warm and generous hospitality. For some it was the first time they had made the journey to Delegate, while for others it had been years. Everyone, however, made known that they were keen for a return visit when the weather gets warmer.

Cynthia Dolan

“St Stephen’s Anglican Church, Craigie will be holding a Cessation of Ministry Service and a celebration of the Church’s rich history on 23rd September at 11 am. The service will be followed by lunch at the Craigie Hall.”

The death occurred recently of a former Delegate man, Stan Jameson, who moved with his wife Joan to Harden, several years ago. Stan’s funeral took place at a graveside service at Harden on Thursday 23rd.

He is survived by daughter Rhonda, son-in-law Max, granddaughter Sharyn, her husband Steve and great-grand daughter Emily. One brother Ashley and one sister Margaret also survive him.

There is a great calendar, of the Border area available at the RTC for the price of a gold coin. It was produced as part of the streetscape Project by Regional Arts Victoria through East Gippsland Shire Council. Visitors will find it very helpful, as it lists the historic huts and sites as well as camping areas and other scenic attractions.

An artist’s impression of the proposed Delegate Streetscape has been on show throughout the town and on Council’s website. It is hoped that the plaza in front of the School of Arts will be completed by the Celebrating our Heritage weekend.

From Kylie Douch re Medical Students visit:

Thank you guys so much—Delegate was fabulous and the students found it very informative clinically and absolutely loved the amazing spread and warm hospitality. Will definitely be back—might even try and expand on it next year. You guys were the epitome of our rural program.

LOOKING BACK

The old photo below was loaned to us by Joan Jones and we think would have been taken in the mid eighties. The caption read “Pictured above are ladies sitting on the steps of Jan Ingram’s house after the entrée session of the progressive luncheon at Tubbut.”

“Thirty five ladies travelled to Tubbut for a Progressive Luncheon to raise money to send two representatives from the Delegate Hospital Auxiliary to Sydney for the annual conference. The day was gloriously sunny, so nice to experience after the long cold winter. Entrees were served at Jan Ingram’s home in Tubbut and then down to Pat Ventry’s home near Deddick for the other two courses. A wonderful way to raise money and enjoy oneself at the same time.”

The Auxiliary ladies are still raising money to send Delegates to the annual conference and this year will be holding a casserole luncheon at the Delegate Country Club, where Cynthia (nee Jones) will do a demonstration of hat making. Cynthia has become very well known in the millinery world, having won many prestigious awards and it will be fascinating to see her apply her craft.

The ladies pictured below are: Back Nola Payten, Cheryl Guthrie, ? Second row: Olga Cotton, Heather Jones, Dell Duffel, Helen Neven, Patrizia Neven, Front: Lorna Callaway and Joan Jones.

None of us could name the attractive lady at the back—perhaps some of the readers may know.



Community Information

EMERGENCY / AMBULANCE: 000

FIRE: 000

POLICE

Delegate: 6458 8044

Bombala : 64583444

Cooma: 6452 0099

Bendoc: 6458 1523

HOSPITAL: 6459 8000

DOCTOR: 64951369

CHURCHES

Catholic: Father Mick McAndrew 64522062

Sister Teresa Keane: 6458 3045

Services: Delegate Saturday 6:00pm

Liturgy of the word and Holy Communion

Bombala Sunday 9:00am

Liturgy of the word and Holy Communion

Anglican: Rev. Robert Lindeck 6241557 Mob.

0408531544

Rev Judy Holdsworth—64583513

Services: 11am every Sunday..

COMMUNITY HEALTH (3 days per week)

Generalist Community Nurse—Monday, Thursday, Friday

Wellness Clinic—Monday, Tuesday, Thursday and Friday 1pm to 2pm

Pathology—Wednesdays 0930-1-3— hours

Immunisation Clinic—Fourth Thursday from 1100hours.

Podiatry Clinic

Victorian Visits Tuesdays

Call MPS 64598000

Healthdirect and GP helpline 1800022222

MONARO FAMILY SUPPORT SERVICE

Bombala Office: 6458 4888

open Tues to Thurs - 9:00am to 5:00pm

COUNCIL CHAMBERS: 6458 3555

DELEGATE PRE-SCHOOL: 6458 8196

DELEGATE PUBLIC SCHOOL: 6458 8183

DELEGATE PROGRESS ASSOCIATION

RTCT Centre - 6458 8388— dpaoffice@bigpond.com

Newspaper: delegateprogress@exemail.com.au

NRMA/RACV: Jack Stewart: 64588047

TUBBUT ACCESS CENTRE: 6458 0295

DELEGATE CARAVAN PARK: 64584047

Delegate Progress Association Inc.

66A Bombala Street

DELEGATE NSW 2633

PH 6458 8388 Fax 64588 374

E-mail dpaoffice@bigpond.com

delegateprogress@exemail.com.au

(for paper)

‘Delegate Doings’ Subscription:

\$38.60 by Post

Email \$16.50.

Cash or Cheque payable to
The Delegate Progress Association Inc

Amount \$ _____

Name

Address or email:

The Delegate Doings is published by the Delegate Progress Association. We welcome information about meetings and reports on functions and other activities of local people and organisations, factual historical articles and poetry etc. We do not publish letters to the editor. The publisher accepts no responsibility for any advertisement, or articles. Any advertisement or article is published at the risk of the contributor, who accepts liability for any intended publication. All such contributors agree to indemnify the publisher and warrant that the material is accurate and is neither deceptive or misleading, in breach of copyright, defamatory, or in breach of any other laws and regulations.

ADVERTISING IN THE “DELEGATE DOINGS”

Spot Ad:	1	6	11
\$5 cash—\$7.50 a/c	Issue	Issues	Issues
1/4 Page	\$17.50	\$87.50	\$157.50
1/2 Page	\$35.00	\$175.00	\$315.00
Full Page	\$70.00	\$350.00	\$630.00
Back Page	\$80.00		
Full Page Insert	\$90.00		

Colour advertising: prices on application

PHOTOS OF SCOTLAND AND ENGLAND .

Sharon and Russel Buckman are holidaying in Scotland and England and Sharon sent us the interesting photos shown below:

They are as follows: L to R top: Hermitage Castle on the border, Drummond Castle Gardens, Muthill, Perthshire. 2nd row: Crossing the Ashness Bridge in the Lakes District, Preston's Mill the Lothians, Scotland. Bottom Row—Riding the chair down into Gaping Gill, Yorkshire, Small town of Borrowdale.

